

Product datasheet for **MG207260**

Gabpa (NM_008065) Mouse Tagged ORF Clone

Product data:

Product Type:	Expression Plasmids
Product Name:	Gabpa (NM_008065) Mouse Tagged ORF Clone
Tag:	TurboGFP
Symbol:	Gabpa
Synonyms:	GABPalpha
Mammalian Cell Selection:	Neomycin
Vector:	pCMV6-AC-GFP (PS100010)
E. coli Selection:	Ampicillin (100 ug/mL)



[View online »](#)

ORF Nucleotide Sequence:

>MG207260 representing NM_008065
 Red=Cloning site Blue=ORF Green=Tags(s)

TTTTGTAATACGACTCACTATAGGGCGGCCGGAATTCGTCGACTGGATCCGGTACCGAGGAGATCTGCC
 GCC**CGGATCGCC**

ATGACTAAGAGAGAAGCAGAAGAGCTGATAGAATTGAGATCGACGGGACTGAGAAAAGCAGAGTGCACAG
 AAGAAAGCATTGTGGAACAAACCTATACCCAGCTGAATGTGTAAGCCAGGCCATAGACATCAATGAACC
 AATAGGCAATTTAAAGAACTACTAGAACCAAGACTGCAGTGTTCTTTGGATGCTCATGAAATTTGCCTG
 CAAGATATTCAGCTGGATCCAGACCGAAGCTTGTTTGATCAAGGAGTGAAAACAGATGGGACTGTACAGC
 TTAGTGTACAGGTAATTTCTTACCAAGGAATGGAGCCAAAGTTGAACATTCTTGAATTTGTAAGACTGC
 GGAACCGTCGAGGTGGTCATCGATCCAGATGCCACCACGCGGAAGCAGAAGCGCATCTCGTTGAAGAA
 GCTCAAGTGATACTCTGACGGCACCAAGCACATTACGACCATTCAGACGAGACCTCGGAGCAGGTGA
 CGAGATGGGCTGCTGCACTGGAAGGCTACAGAAAAGCAGGAGCGCCTTGGCATCCCCTATGATCCTAT
 AACTGGTCCACGGACCAAGTCTGCATTGGGTGGTTTGGGTAATGAAGGAGTTCAGCATGACTGATATA
 GACCTCACCACTCAACATTTTCGGGAAGAGAATTATGTAGTCTCAACCAAGAAGATTTTTTTCAGCGGG
 TCCTCGGGGAGAAATCTTTGGAGTCACTGGAGCTTCTCGAAAATATGTTTTGGCCAGCCAAGAGCA
 ACAGATGAATGAGATAGTTACCATTGACCAGCCTGTGCAGATTATTCCAGCCTCAGTGCCTCCCCTACA
 CCGACTACGATTAAGTTATAAACAGCAGTGCAAAAGCAGCTAAAGTGAACGGTCCCAAGGATTTTCAG
 GAGAAGACAGAAGTTCACCGGGGAACAGAACAGGAAACAATGGTCAGATCCAACATATGGCAGTTTTTGT
 AGAACTTCTTACTGACAAGGATGCTCGAGACTGTATTTCTTGGTTGGTGAAGGTGAATTTAAGCTA
 AATCAGCCTGAGTTGGTTGCGCAAAAATGGGGACAACGTAAAGAACAAGCCTACCTGAACATGAGAAAC
 TTAGCCGTGCATTACGGTATTATTATGATGGGGACATGATTTGTAAGTTCAGGCAAGAGATTTGTGTA
 CAAATTTGTTTGTGACTTGAAGACTCTTATTGGATACAGTGCAGCAGAAGTGAACCGTCTGGTCATAGAG
 TGTGAACAGAAGAACTGGCACGGATGCAGCTGCATGGGATTGCCAGCCAGTCACGGCAGTAGCACTGG
 CAGCCACCTCTCTACAGGCAGACAAAGAGATT

ACGCGTACGCGGCCGCTCGAG – GFP Tag – GTTTAA

Protein Sequence:

>MG207260 representing NM_008065
 Red=Cloning site Green=Tags(s)

MTKREAELIEIEIDGTEKAECTEESIVEQTYTPAECVSQAIDINEPIGNLKKLLEPRLQCSLDAHEICL
 QDIQLDPRSLFDQGVKTDGTVQLSVQVISYQGMPEKLNILEIVKTAETVEVVIDPAHHAEAEHLVEE
 AQVITLDGTHKHIITISDETSEQVTRWAAALEGYRKEQERLGIPYDPIHSTDQVLHVVVWVWMEFSTMDI
 DLTTLNISGRELCSLNQEDFFQVRPRGELWHLLELLRKYVVLASQEQMNEIVTIDQPVQIIPASVPPAT
 PTTIKVINSSAKAAKVQRSPRISGEDRSSPGNRTGNNGQIQLWQFLLELLTDKDARDICISWVGDEGEFKL
 NQPELVAQKWGQRKNKPTMNYEKLSRALRYYYDGMICKVQGKRFVYKFCVCDLKTILIGYSAAELNRLVIE
 CEQKLLARMQLHGIAQPVTAVALAATSLQADKEI

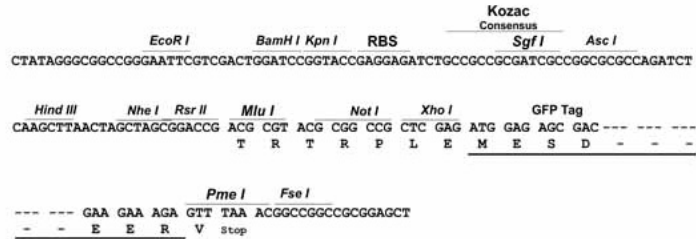
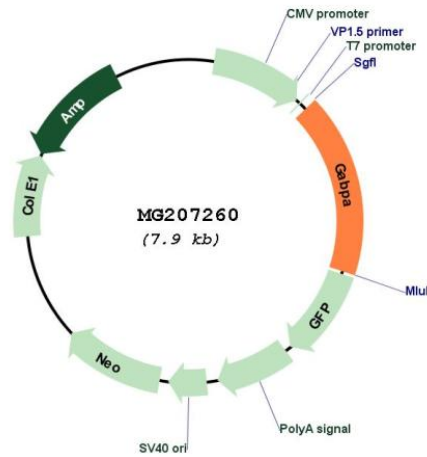
TRTRPLE – GFP Tag – V

Restriction Sites:

Sgfl-MluI

Cloning Scheme:

Cloning sites used for ORF Shutting:


Plasmid Map:


ACCN: NM_008065

ORF Size: 1362 bp

OTI Disclaimer:	<p>Due to the inherent nature of this plasmid, standard methods to replicate additional amounts of DNA in E. coli are highly likely to result in mutations and/or rearrangements. Therefore, OriGene does not guarantee the capability to replicate this plasmid DNA. Additional amounts of DNA can be purchased from OriGene with batch-specific, full-sequence verification at a reduced cost. Please contact our customer care team at custsupport@origene.com or by calling 301.340.3188 option 3 for pricing and delivery.</p> <p>The molecular sequence of this clone aligns with the gene accession number as a point of reference only. However, individual transcript sequences of the same gene can differ through naturally occurring variations (e.g. polymorphisms), each with its own valid existence. This clone is substantially in agreement with the reference, but a complete review of all prevailing variants is recommended prior to use. More info</p>
OTI Annotation:	<p>This clone was engineered to express the complete ORF with an expression tag. Expression varies depending on the nature of the gene.</p>
Components:	<p>The ORF clone is ion-exchange column purified and shipped in a 2D barcoded Matrix tube containing 10ug of transfection-ready, dried plasmid DNA (reconstitute with 100 ul of water).</p>
Reconstitution Method:	<ol style="list-style-type: none">1. Centrifuge at 5,000xg for 5min.2. Carefully open the tube and add 100ul of sterile water to dissolve the DNA.3. Close the tube and incubate for 10 minutes at room temperature.4. Briefly vortex the tube and then do a quick spin (less than 5000xg) to concentrate the liquid at the bottom.5. Store the suspended plasmid at -20°C. The DNA is stable for at least one year from date of shipping when stored at -20°C.
RefSeq:	<p>NM_008065.2, NP_032091.2</p>
RefSeq Size:	<p>5004 bp</p>
RefSeq ORF:	<p>1365 bp</p>
Locus ID:	<p>14390</p>
UniProt ID:	<p>Q00422</p>
Cytogenetics:	<p>16 46.92 cM</p>
Gene Summary:	<p>Transcription factor capable of interacting with purine rich repeats (GA repeats). [UniProtKB/Swiss-Prot Function]</p>