

Product datasheet for **MG207234**

Ccm2 (NM_146014) Mouse Tagged ORF Clone

Product data:

Product Type:	Expression Plasmids
Product Name:	Ccm2 (NM_146014) Mouse Tagged ORF Clone
Tag:	TurboGFP
Symbol:	Ccm2
Synonyms:	BC029157
Mammalian Cell Selection:	Neomycin
Vector:	pCMV6-AC-GFP (PS100010)
E. coli Selection:	Ampicillin (100 ug/mL)



[View online »](#)

ORF Nucleotide Sequence:

>MG207234 representing NM_146014
 Red=Cloning site Blue=ORF Green=Tags(s)

TTTTGTAATACGACTCACTATAGGGCGGCCGGAATTCGTCGACTGGATCCGGTACCGAGGAGATCTGCC
 GCC**CGGATCGCC**

ATGGAGGAGGAGGCAAGAAGGGCAAGAAGCCTGGAATTGTGTCGCCATTTAAACGAGTATTCCTAAAAG
 GTGAAAAGAGTAGAGATAAGAAAGCCCATGAGAAGGTGACAGAGAGGCCCTCTGCACACTGTGGTGCT
 GGCGTTACCTGAGCGCGTCGAGCCAGACAGACTGCTGAGCGACTATATTGAGAAGGAGGTGAAGTATTTA
 GGTCAAGTAAACATCCATCCCAGGCTACCTGAACCTTCCAGTAGGACGGAATCCTGCATTTATAGACA
 AGGCAAAGCGGTCCCACCAGCTTCTGGGCACCTGACTCAGGAGCAGATGCTGTGCTCAGTCTGTCTGC
 CTAACAATGTCAAGTTGGCTGGAGGGACGGGAGGACATTATCCTCAGGGTGCCCATCCATGATATCGCT
 GCTGTCTCTATGTCGAGATGATGCTGCACACCTGGTGGTCTGAAGACAGCCAGGACCCAGGCATCT
 CCCCAGCCAGAGTCTGTGTGCAGAAAGTTCTAGAGGCCTCAGCGCAGGTTCTTGTGAGAAAGTGCAGT
 GGGGCCAGTAGAGGCATGTTGCCTGGTTCATCATGGCCACAGAGCAAGGTCGCCGCTGAAGAGTTGTGC
 TCCTGCTCAGCCAGGCTTCCAGATTGTTTACACGGAGTCCACCATCGACTTTCTGGACCAGCAATAT
 TTGATGGGGCTTCCACACCTACCCACCCTGTGCTGCACAGTATGACTCTTCCACGAAAAGTGGACAT
 GAAGGACAGTTACGATGCTGACGCCAGCACCTTCTGCTTCCCGGACTCTGGGGATGTGGGAGGCCTGCCG
 CCCTTACCCTTCTGCATGCAGACATACCCCATAGCAAGACTGTCAGTGAGAGCGAGCTGAGCACCAGCG
 CCACGGAAGTGTGCAGGACTACATGCTCACGTTACGTACGAAGTGTGTCATCACAGGAGATCCAGCAGTT
 CGCAGCTCTGCTACATGAGTACCGCAATGGGGCCTCTATCCATGAGTTTTGCATCAGCCTGCGGCAGCTC
 TATGGGGACAGCCGCAAGTTCTGCTACTTGGTCTCAGACCCTCATACTGAGAAGGACAGTCAAGTCACT
 TTGAAAACCTTCTGGAGACCATTGGCGTGAAGACGGCCGTGGCATCATCACTGACAGCTTGGTAGGCA
 TGCTCGTGCCCTGAGTACCACCTCCACATCCACCATCAATGGGAACAGGACCACAGGCAGCCCTGATGAC
 CGCTCTGCGCCCTCAGAGGGGATGAGTGGGACCGCATGATTTTCAGACATCAGTAGTGATATTGAAGCGC
 TAGGCTGCAGCATGGACCAGGACTCAGCG

ACGCGTACGCGGCCGCTCGAG - GFP Tag - GTTTAA

Protein Sequence:

>MG207234 representing NM_146014
 Red=Cloning site Green=Tags(s)

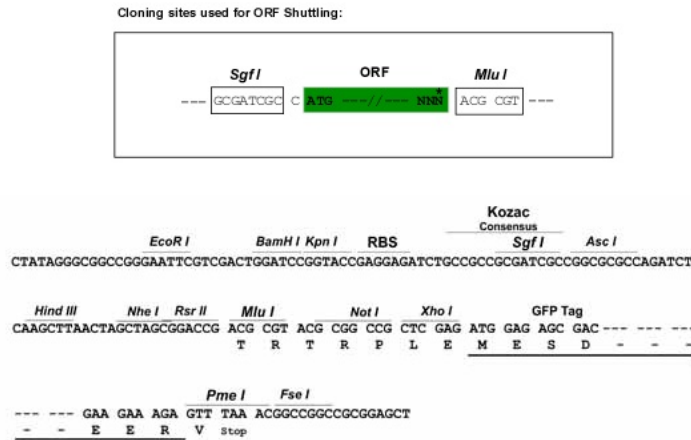
MEEEGKKGKPGIVSPFKRVFLKGEKSRDKKAHEKVTERPLHTVVLALPERVEPDRLLSDYIEKEVKYL
 GQLTSIPGYLNPSSRTEILHFIDKAKRSHQLPGHLTQEHDVLSL SAYNVKLAWRDGEDIIILRVPIHDIA
 AVSYVRDAAHLVVLKTAQDPGISPSQSLCAESSRGLSAGSLSESAVGPVEACCLVIMATESKVAEEELC
 SLLSQVFQIVYTESTIDFLDRAIFDGASTPTHHL SLHSDDSSSTKVDKDSYDADASTFCFPDSGDVGGLP
 PLPFCMQTSPHSKTVSESELSTSATELLQDYMLTLRKLSSQEIQQFAALLHEYRNGASIHFCISLRQL
 YGDSRKFLLLGLRPFIPKDSQHFENFLETIGVKDGRGIITDSFGRHRRALSTTSTSTINGNRTTGSPDD
 RSAPSEGDEWDRMISDISSDIEALGCSMDQDSA

TRTRPLE - GFP Tag - V

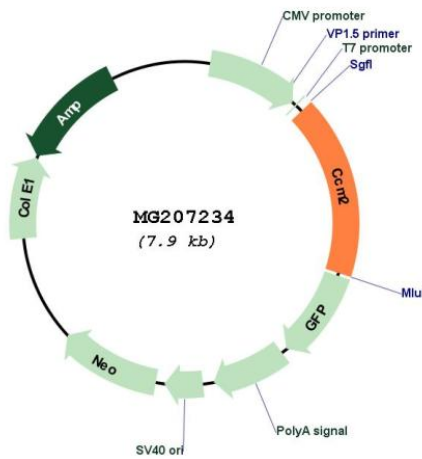
Restriction Sites:

SgfI-MluI

Cloning Scheme:



Plasmid Map:



ACCN: NM_146014

ORF Size: 1359 bp

OTI Disclaimer: The molecular sequence of this clone aligns with the gene accession number as a point of reference only. However, individual transcript sequences of the same gene can differ through naturally occurring variations (e.g. polymorphisms), each with its own valid existence. This clone is substantially in agreement with the reference, but a complete review of all prevailing variants is recommended prior to use. [More info](#)

OTI Annotation: This clone was engineered to express the complete ORF with an expression tag. Expression varies depending on the nature of the gene.

Components:	The ORF clone is ion-exchange column purified and shipped in a 2D barcoded Matrix tube containing 10ug of transfection-ready, dried plasmid DNA (reconstitute with 100 ul of water).
Reconstitution Method:	<ol style="list-style-type: none">1. Centrifuge at 5,000xg for 5min.2. Carefully open the tube and add 100ul of sterile water to dissolve the DNA.3. Close the tube and incubate for 10 minutes at room temperature.4. Briefly vortex the tube and then do a quick spin (less than 5000xg) to concentrate the liquid at the bottom.5. Store the suspended plasmid at -20°C. The DNA is stable for at least one year from date of shipping when stored at -20°C.
RefSeq:	<u>NM_146014.3</u>
RefSeq Size:	1789 bp
RefSeq ORF:	1362 bp
Locus ID:	216527
UniProt ID:	<u>Q8K2Y9</u>
Cytogenetics:	11 A1
Gene Summary:	Component of the CCM signaling pathway which is a crucial regulator of heart and vessel formation and integrity. May act through the stabilization of endothelial cell junctions. May also function as a scaffold protein for MAP2K3-MAP3K3 signaling. Seems to play a major role in the modulation of MAP3K3-dependent p38 activation induced by hyperosmotic shock. [UniProtKB/Swiss-Prot Function]