

Product datasheet for **MG207175**

Mfsd11 (NM_178620) Mouse Tagged ORF Clone

Product data:

Product Type:	Expression Plasmids
Product Name:	Mfsd11 (NM_178620) Mouse Tagged ORF Clone
Tag:	TurboGFP
Symbol:	Mfsd11
Synonyms:	2600014M03Rik
Mammalian Cell Selection:	Neomycin
Vector:	pCMV6-AC-GFP (PS100010)
E. coli Selection:	Ampicillin (100 ug/mL)



[View online »](#)

ORF Nucleotide Sequence:

>MG207175 representing NM_178620
 Red=Cloning site Blue=ORF Green=Tags(s)

TTTTGTAATACGACTCACTATAGGGCGGCCGGAATTCGTCGACTGGATCCGGTACCGAGGAGATCTGCC
 GCC**CGCATCGCC**

ATGTC**CCCGGAGTCTAAAAGCTTTTCAACATCGTTATTTTAGGAGTTGCCTTTATGTTTATGTTACCCG**
CCTTTCAGACTTGTGAAATGTGGCGCAAACTGTCATCAGGAGCTTAAATAGCACAGATTTTCATGGCAG
 TGGATATACCAGCTTGGCAATTATTTATGGCGTGTCTCTGCTTCAAATTTGATCACTCCGTCGGTGGT
 GCCATTGTTGGACCTCAGATCTCTATGTTTGTCACTGGTTTGTGTTTACAGCATGTACATTGCCGTTTTTA
 TCCAGCCTTCCCATGGTCTTCTACACAGCATCTGTCTTTCATCGGAATTGCCGCTGCTGTCTTTGGAC
 AGCACAAGGAAATGCCTGACGATAAATCTGATGAGCACACAATCGGGAGAAACAGCGGAATTTCTGG
 GCACTCTTACAGTCTAGCTTGTCTTTGGGAATCTCTACATATATTTGCATGGCAAGGGAAGACCCAGA
 TCTCAGAGCATGACCGAAGGACAGTGTATTGCTCTGACAGTGATAAGCCTCGTGGGACCGTTCTGTT
 CTTTCTCATT**CGAAACAGATCCTGAGAATGTCCTTGGAGAAGAAGAGTCTTGGCATGACCAGGACATG**
GAAGCCACCGAGTCTGCCAGAACAACGTGACAAAGGCAGTCGATGCGTTTAAAAAGTCTCTGAGGCTGT
GTGTCACCAAGGAGATGCTGCTCCTGAGCGTACGACTGCCTACACAGGTCTGGAGCTGACCTTCTCTC
TGGGGTGTACGGTACCTGTATTGGGGCCGTAACAATTTGGGACAGAAGAGAAAAGCCTCATTGGACTT
TCTGGAATTTTCATCGGCATTGGAGAGATTTTAGGTGGGAGCCTCTTCGGCCTGCTGAGCAAGAACAGTC
GCTTTGGCAGGAACCCGGTCTGCTGCTCGGCACCCTGGTGCCTTCTGAGCCTTCTACTGATCTTTCT
CAACATGCCCGGAGACCGCCCATTTGCCCTGTGGAAGGACCAACAGCATTGCATACATCAGGCCACG
AAAGAAGTTGCCATTCTCTGCAGTTTCTGCTGGGTCTGGGAGACAGCTGCTTCAACACCCAGCTGCTTA
GCATTCTGGGTTTTCTCTACTCGGAAGACAGCGCCCGCCTTCGCGGTCTTAAAGTTTGTTCAGTCAAT
CTGCGCAGCCGTGGCCTTTTTCTACAGCAACTACCTCCTCCTCCACTGGCAGCTCCTGGTCATGGTGATA
TTTGGGTTTTTGAACCATTTCTTTCTCGCTGTGGAGTGGGACGCTGCTGCCATCGTGGCCCGAGGCT
CGGACTACCGAAGCATT

ACGCGTACGCGGCCGCTCGAG - GFP Tag - GTTTAA

Protein Sequence:

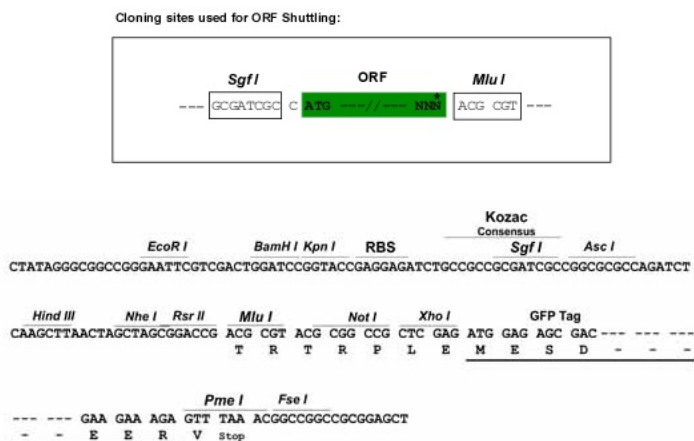
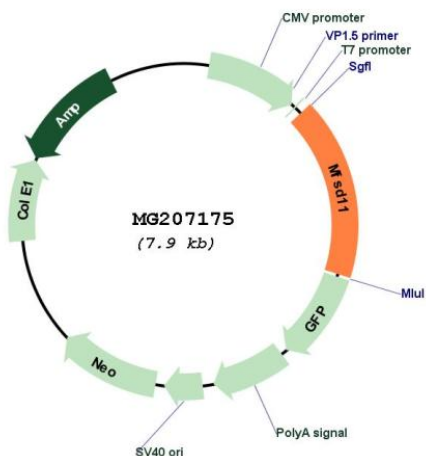
>MG207175 representing NM_178620
 Red=Cloning site Green=Tags(s)

MSPE**S**KKLFNIVILGVAFMFMTAFQTCGNVAQTVIRSLNSTDFHGSY**T**SLAIIYGVFSASNLITPSV**V**
 AIVGPQISMFV**S**GLFY**S**MYIAVFIQPPW**S**FY**T**ASVFIGIAAAVLWTAQGNCLTINSDEHTIGRNSGIFW
 ALLQSS**L**FFGNLYIYFAWQ**G**K**T**QISEHDRRTVFI**A**LTVISLVGT**V**LFFLIRKPD**P**ENVLGEEES**C**DDQDM
 EATESAQN**N**VTKAVDAFKK**S**LR**L**CVTREM**L**LLSVTTAYTGLELTF**F**SGVY**G**TCIGAV**N**KFGTEEK**S**LIGL
 SGIFIGIEILGG**S**L**F**GL**L**SKNSR**F**GRNP**V**LLGTLVHFVAFY**L**IFLNMPGD**A**PIAPVEGT**N**SIAYIR**P**S
 KEVAILCS**F**LLGLGD**S**CFNT**Q**LLSILGFLY**S**ED**S**APAFV**F**K**F**VQ**S**ICA**A**V**A**FFY**S**NY**L**LLHW**Q**LLVM**V**I
 FGFFGTIS**F**FAVEWD**A**AAI**V**ARG**S**DY**R**SI

TRTRPLE - GFP Tag - V

Restriction Sites:

Sgfl-MluI

Cloning Scheme:

Plasmid Map:


ACCN: NM_178620

ORF Size: 1347 bp

OTI Disclaimer: The molecular sequence of this clone aligns with the gene accession number as a point of reference only. However, individual transcript sequences of the same gene can differ through naturally occurring variations (e.g. polymorphisms), each with its own valid existence. This clone is substantially in agreement with the reference, but a complete review of all prevailing variants is recommended prior to use. [More info](#)

OTI Annotation: This clone was engineered to express the complete ORF with an expression tag. Expression varies depending on the nature of the gene.

Components:	The ORF clone is ion-exchange column purified and shipped in a 2D barcoded Matrix tube containing 10ug of transfection-ready, dried plasmid DNA (reconstitute with 100 ul of water).
Reconstitution Method:	<ol style="list-style-type: none">1. Centrifuge at 5,000xg for 5min.2. Carefully open the tube and add 100ul of sterile water to dissolve the DNA.3. Close the tube and incubate for 10 minutes at room temperature.4. Briefly vortex the tube and then do a quick spin (less than 5000xg) to concentrate the liquid at the bottom.5. Store the suspended plasmid at -20°C. The DNA is stable for at least one year from date of shipping when stored at -20°C.
RefSeq:	<u>NM_178620.4</u>
RefSeq Size:	3172 bp
RefSeq ORF:	1350 bp
Locus ID:	69900
UniProt ID:	<u>Q8BJ51</u>
Cytogenetics:	11 E2