

Product datasheet for **MG207166**

Tuba1c (NM_009448) Mouse Tagged ORF Clone

Product data:

Product Type:	Expression Plasmids
Product Name:	Tuba1c (NM_009448) Mouse Tagged ORF Clone
Tag:	TurboGFP
Symbol:	Tuba1c
Synonyms:	M[a]6; Tuba6
Mammalian Cell Selection:	Neomycin
Vector:	pCMV6-AC-GFP (PS100010)
E. coli Selection:	Ampicillin (100 ug/mL)



[View online »](#)

ORF Nucleotide Sequence:

>MG207166 representing NM_009448
 Red=Cloning site Blue=ORF Green=Tags(s)

TTTTGTAATACGACTCACTATAGGGCGGCCGGAATTCGTCGACTGGATCCGGTACCGAGGAGATCTGCC
 GCC**GCGATCGCC**

ATGCGTGAGTGCATCTCCATCCACGTTGGCCAGGCTGGTTCAGATCGGCAATGCCTGCTGGGAGCTCT
 ACTGCCTGGAACATGGCATCCAGCCTGATGGCCAGATGCCAAGTGACAAGACCATTGGGGGAGGAGATGA
 CTCTTCAACACCTTCTTCAGTGAGACAGGAGCTGGCAAGCATGTGCCCCGGGCAGTGTTTCGTAGACCTG
 GAACCCACGGTCAATCGATGAAGTTCGCACCGGCACCTACCGCCAGCTCTTCCATCCTGAGCAGCTCATCA
 CAGGCAAGGAGGATGCTGCCAATAACTATGCCCGTGGCCACTACACCATTGGCAAGGAGATCATTGACCT
 TGTCTGGACAGGATTCGAAAGCTGGCTGACCAGTGCACAGGTCTCCAGGGCTTCTTGGTTTTCCACAGC
 TTTGGCGGGGAACTGGCTCTGGCTTACCTCCCTGCTGATGGAGCGGCTCTCTGTGGATTACGAAAGA
 AGTCCAAGCTGGAGTTCTCCATTTACCCAGCCCCCAGGTTTCCACTGCTGTGGTTGAGCCCTACAATTC
 CATCTCACCCACACCACCCTGGAGCACTCTGATTGTGCCTTCATGGTAGACAATGAGGCCATCTAT
 GACATCTGTCGTAGAAACCTCGACATTGAGCGCCAACCTACACCAACCTTAACCGCCTTATTAGCCAGA
 TTGTGTCTTCCATCACTGCTTCCCTCAGATTTGATGGGGCCCTGAATGTTGATCTGACAGAATCCAGAC
 CAACCTGGTACCCTACCCTCGCATCCACTTCCCTCTGGCCACTTATGCCCTGTCATCTCTGCTGAGAAA
 GCCTACCACGAGCAGCTTACAGTAGCAGAGATCAACATGCCTGCTTTGAGCCAGCCAACCATGGTGA
 AATGTGACCTCGCCATGGTAAATACATGGCTTGTGCTGCTGTACCGTGGTGTGGTTCCCAAAGA
 TGTCAATGCTGCCATTGCCACCAACCAAGCAAGCGTACCATCCAGTTTGTGGACTGGTGGCCCACTGGC
 TTCAAGTTGGCATTAACTACCAGCCTCCACTGTGGTACCCGGTGGTACCTGGCCAAGGTGCAGAGAG
 CTGTGTGCATGCTGAGCAACACCACGCCATTGCTGAGGCCTGGGCTCGCCTAGATCACAAGTTTGATCT
 GATGATGCCAAGCGTGCCTTTGTGCACTGGTATGTGGGTGAGGGCATGGAGGAGGTGAGTTCTCTGAG
 GCCCGTAGGACATGGCTGCCCTAGAGAAGGATTATGAGGAGGTTGGGGCAGATAGTCTGAAGGAGACG
 ATGAGGGTGAAGGAATAT

ACGCGTACGCGGCCGCTCGAG - GFP Tag - GTTTAA

Protein Sequence:

>MG207166 representing NM_009448
 Red=Cloning site Green=Tags(s)

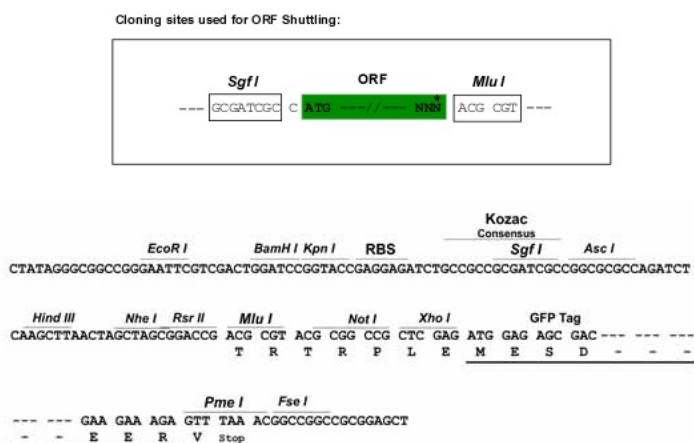
MRECISIHVQAGVQIGNACWEL YCLEHGIQPDGQMPSDKTIGGGDDSFNTFFSETGAGKHVPRAVFVDL
 EPTVIDEVRTGTYRQLFHPEQLITGKEDAANNYARGHYTIGKEIIDLVLDRIKRLADQCTGLQGFLVFHS
 FGGGTGSGFTSLLMERLSVDYGGKSKLEFSIYPAPQVSTAVVEPYNSILTHTTLEHSDCAFMDNEAIY
 DICRRNLDIRPTYTNLNRLLISQIVSSITASLRFDGALNVDL TEFQTNLVPYPRIFPLATYAPVISA EK
 AYHEQLTVAEITNACFEPANQMVKCDPRHGKYMACCLLYRGDVVPKDVNAAIATIKTKRTIQFVDWCPTG
 FKVGINYQPPTVVPGGDLAKVQRAVCMLSNNTTAIAEAWARLDHKFDL MYAKRAFVHWYVGEEMEEGEFSE
 AREDMAALEKDYEEVGADSAEGDDEGE EY

TRTRPLE - GFP Tag - V

Restriction Sites:

Sgfl-MluI

Cloning Scheme:



ACCN: NM_009448

ORF Size: 1347 bp

OTI Disclaimer: The molecular sequence of this clone aligns with the gene accession number as a point of reference only. However, individual transcript sequences of the same gene can differ through naturally occurring variations (e.g. polymorphisms), each with its own valid existence. This clone is substantially in agreement with the reference, but a complete review of all prevailing variants is recommended prior to use. [More info](#)

OTI Annotation: This clone was engineered to express the complete ORF with an expression tag. Expression varies depending on the nature of the gene.

Components: The ORF clone is ion-exchange column purified and shipped in a 2D barcoded Matrix tube containing 10ug of transfection-ready, dried plasmid DNA (reconstitute with 100 ul of water).

Reconstitution Method:

1. Centrifuge at 5,000xg for 5min.
2. Carefully open the tube and add 100ul of sterile water to dissolve the DNA.
3. Close the tube and incubate for 10 minutes at room temperature.
4. Briefly vortex the tube and then do a quick spin (less than 5000xg) to concentrate the liquid at the bottom.
5. Store the suspended plasmid at -20°C. The DNA is stable for at least one year from date of shipping when stored at -20°C.

RefSeq: [NM_009448.3](#)

RefSeq Size: 1977 bp

RefSeq ORF: 1350 bp

Locus ID: 22146

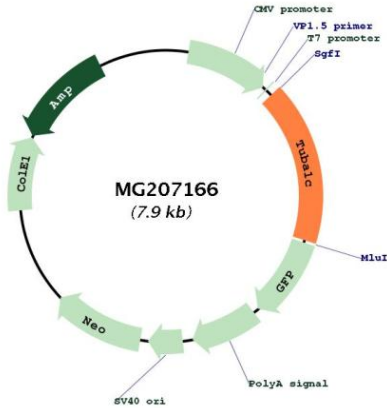
UniProt ID: [P68373](#)

Cytogenetics: 15 F1

Gene Summary:

Tubulin is the major constituent of microtubules. It binds two moles of GTP, one at an exchangeable site on the beta chain and one at a non-exchangeable site on the alpha chain. [UniProtKB/Swiss-Prot Function]

Product images:



Circular map for MG207166