

Product datasheet for **MG207142**

4930579E17Rik (BC086665) Mouse Tagged ORF Clone

Product data:

Product Type:	Expression Plasmids
Product Name:	4930579E17Rik (BC086665) Mouse Tagged ORF Clone
Tag:	TurboGFP
Symbol:	4930579E17Rik
Synonyms:	4930579E17Rik; AV040780
Mammalian Cell Selection:	Neomycin
Vector:	pCMV6-AC-GFP (PS100010)
E. coli Selection:	Ampicillin (100 ug/mL)



[View online »](#)

ORF Nucleotide Sequence:

>MG207142 representing BC086665
 Red=Cloning site Blue=ORF Green=Tags(s)

TTTTGTAATACGACTCACTATAGGGCGGCCGGAATTCGTCGACTGGATCCGGTACCGAGGAGATCTGCC
 GCC**CGCATCGCC**

ATGGAGCCTGGGCGTGCAGCAGGCCCGCTGAGCCTGGGCATTGCGTGAGCGGCCCGCGGGCGCGGGCT
 CAGCGTTCCTCGGAGTCCCGTTGTCCGTGCTGGGGCGGAGCCCGGAACCGCCCTGGAACCGTGGCCGC
 CGTGCTGCCGGCTGGGGTTGCGGGGAAAGGATGGGCGTCCGCACCCGAAAGCAGTTCTGCCGGTTCTG
 GAAAGGCCCTCATCAGCTACACTTTGCAGGCTATGGAGAGAGTATGCTGGATAAAGGACATTGTTGTGA
 CAGTGACAGGGGAGAACATGGAAGCAATGAGAAGTATCATCCAGAGGTATGGGCATAAGCGCATCTCACT
 AGCTGAGGCTGGAGCCACGCGCCACAGATCAATTTTCAATGGACTGAAAGCCCTGGCAGAAGATCAGCCA
 GACTGTAACTACTAAGCCAGAAGTGGTATTATCCATGACGCCGTGAGACCTTTTGTGAGGAAGATA
 TCCTCCTGAGAGTTGCTTAGCAGCTAAGGAACATGGGGCAGCAGGCAATTCGACCTCTGGTGTCCAC
 TGTTCATCAGTCCCTCTGCTGATGGTCACTTAGACCACTACTGGACCGTGCCAAGCATAGGGCAAGCGAA
 ATGCCCAAGGCTTTTCTCTTTGATGTCATCTATGAAGCGTATCAGCAGTGTAGTATTTTACTTGGAAAT
 TTGGAACAGAGTCTTGCAGTTGGCTCTAAAATACTGTCACAGGAAAGCAAACTTGTAGAAGGGCCCCC
 TGCCCTCTGGAAGGTGACCTACAAAAGACCTGTGTGCAGCTGAAGCCATGATTAAGAGAAAATTTCA
 CAAGAGATTTGTGTGGTCATGAACACAAAAGATGAAGAATCTGTAGGACATCTTCTTGGAGGAGCGCTAA
 GAAAGGAACTAAATTGTATGAAAATCACATCTACAGTTATGGATCACATAGGCGGAGACATTAGGAACTT
 CATAGAGCAATGTTACAGTTTCTCTGTGTGAATGTTGTGTCCCTGATAGTCAAGAAACCAGGAAGTTA
 CTGCGTATCCTCGAAGAGAGCAGCCTTCTCTTCTGTATCCTGTAGTTGTTGTTTTGGTACACTGCTTTG
 ACTTCAGTCAGTGCCTCGCTCAGAAGATGGAAGCCCTGGTGTGGATTAGGGGTTAGCAAAGGAAGT
 GAAAGAAAGGAATATTCTCCTAAGTGGACTCCTCCTAACTACTCACAGGATGAGCAGAAGCTACAAGAG
 AGTTTAGGACAAAGTGCAGCCATCATAGCTGCCTTAGTTAAGGAAAGAAATTCTGCACCTGTTGGGCAGC
 TCCTGGTGGCA

ACGCGTACGCGGCCGCTCGAG - GFP Tag - GTTTAA

Protein Sequence:

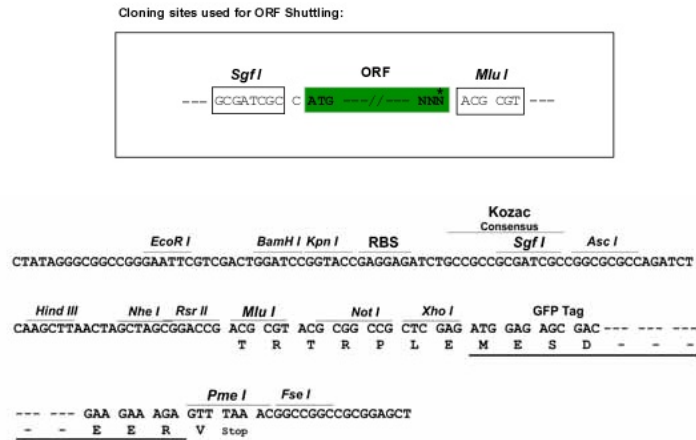
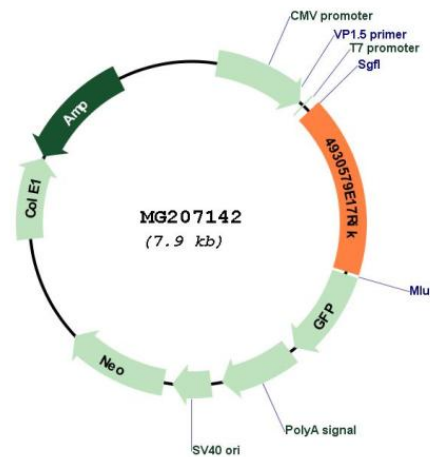
>MG207142 representing BC086665
 Red=Cloning site Green=Tags(s)

MEPGPCSRPAEPGHCVSGPAGAGSAFPESPLSVAGAEPGNRPGTVAAVLPAGGCGERMVTRPKQFCRVL
 ERPLISYTLQAMERVCWIKDIVVTVTGENMEAMRSIIQRYGHRISLAEAGATRHRSIFNGLKALAEQDP
 DCKLTKPEVVIHDAVRPFVEEDILLRVVLAKEHGAAGAIRPLVSTVISPADGHLDSLDRAKHRASE
 MPQAFLLFDVIYEAYQCSDFLEFGTECLQLALKYCHRKAKLVEGPPALWKVYKQDLCAAEAMIKEKIS
 QEICVVMNTKDEESVGHLLLEALRKELNCMKITSTVMDHIGGDIRNFIQCYSFICVNVVSPDSQETRKL
 LRILESSLPLLYPVVVVVLVHCFDFTSVPLAQKMESLVWIRGLAKEVKERNILLSGLLLNYSQDEQKLQE
 SLGQSAIIAALVKERNSALVGQLLVA

TRTRPLE - GFP Tag - V

Restriction Sites:

Sgfl-MluI

Cloning Scheme:

Plasmid Map:


ACCN: BC086665

ORF Size: 1343 bp

OTI Disclaimer: The molecular sequence of this clone aligns with the gene accession number as a point of reference only. However, individual transcript sequences of the same gene can differ through naturally occurring variations (e.g. polymorphisms), each with its own valid existence. This clone is substantially in agreement with the reference, but a complete review of all prevailing variants is recommended prior to use. [More info](#)

OTI Annotation: This clone was engineered to express the complete ORF with an expression tag. Expression varies depending on the nature of the gene.

Components:	The ORF clone is ion-exchange column purified and shipped in a 2D barcoded Matrix tube containing 10ug of transfection-ready, dried plasmid DNA (reconstitute with 100 ul of water).
Reconstitution Method:	<ol style="list-style-type: none">1. Centrifuge at 5,000xg for 5min.2. Carefully open the tube and add 100ul of sterile water to dissolve the DNA.3. Close the tube and incubate for 10 minutes at room temperature.4. Briefly vortex the tube and then do a quick spin (less than 5000xg) to concentrate the liquid at the bottom.5. Store the suspended plasmid at -20°C. The DNA is stable for at least one year from date of shipping when stored at -20°C.
RefSeq:	<u>BC086665</u> , <u>AAH86665</u>
RefSeq Size:	2709 bp
RefSeq ORF:	1343 bp
Locus ID:	75847
Cytogenetics:	12 A3
Gene Summary:	Cytidylyltransferase required for protein O-linked mannosylation (By similarity). Catalyzes the formation of CDP-ribitol nucleotide sugar from D-ribitol 5-phosphate (By similarity). CDP-ribitol is a substrate of FKTN during the biosynthesis of the phosphorylated O-mannosyl trisaccharide (N-acetylgalactosamine-beta-3-N-acetylglucosamine-beta-4-(phosphate-6-)mannose), a carbohydrate structure present in alpha-dystroglycan (DAG1), which is required for binding laminin G-like domain-containing extracellular proteins with high affinity (By similarity). Shows activity toward other pentose phosphate sugars and mediates formation of CDP-ribulose or CDP-ribose using CTP and ribulose-5-phosphate or ribose-5-phosphate, respectively (By similarity). Not Involved in dolichol production (By similarity). [UniProtKB/Swiss-Prot Function]