

Product datasheet for **MG207069**

E2f2 (NM_177733) Mouse Tagged ORF Clone

Product data:

Product Type: Expression Plasmids
Product Name: E2f2 (NM_177733) Mouse Tagged ORF Clone
Tag: TurboGFP
Symbol: E2f2
Synonyms: E2F-2
Mammalian Cell Selection: Neomycin
Vector: pCMV6-AC-GFP (PS100010)
E. coli Selection: Ampicillin (100 ug/mL)
ORF Nucleotide Sequence: >MG207069 representing NM_177733
 Red=Cloning site Blue=ORF Green=Tags(s)

TTTTGTAATACGACTCACTATAGGGCGGCCGGAATTCGTCGACTGGATCCGGTACCGAGGAGATCTGCC
 GCC**CGATCGCC**

ATGCTGCGCGCGCCGGACCCTGGCTCCGGCCACGGCGCAACCTACAAAGAGCTTGCCGGCGCTGAACC
 CCACCGAGCTGTGGCCTTCGGGTCTGAGCAGCCCCAGCTCTGCCCGGCCACCACCGCCACCACCTACTA
 CACTTCGCTTTACACGCAGACGGTGCCTTCCTCTGTGGCGCTGGGCACCTGCCTCGACGCCACTCCCCAC
 GGACCCGAGGGCCAAATTGTGCGATGTGCACCCGACGGCCGGCTGCCGGCCAAAAGGAAGTTGGACCTGG
 AGGGCATTGGGAGGCCTACGGTCCCTGAATTCGGACCCCAAGGGGAAGTGCATCCGCGTGGATGGTTT
 GCCAAGCCCCAAAACCCCAAGTCTCCTGGGAGAAAGACACGCTATGACACGTCGCTGGGGCTCCTGACC
 AAGAAGTTCATTTACCTCCTGAGCGAGTCGGAGGATGGAGTCTGGACCTGAACTGGGCAGCCGAGGTGC
 TGGATGTGCAAAAAGCGCGCATCTATGACATCACCAACGTGCTGGAGGGTATCCAGCTCATCCGCAAGAA
 GTCCAAAAACAACATCCAGTGGGTAGGCAGGGAATTTGAAGACCCCAACCCGACCTCCAGGCAGCAG
 CAGTTGGGGCAGGAGCTGAAGGAGCTGATGAATGCCGAGCAGACCTTGGACCAGCTCATTAGAGTTGCT
 CCCTGAGCTTCAAGCACCTGACCGAAGATAATGCCAACAAGAACTGGCCTATGTGACCTACCAGGATAT
 CCGTGCCGTAGGCAACTCAAGGAGCAGACAGTATTGCGGTCAAGGCCCCACCAGACAAAGATTGGAA
 GTGCCCGACAGGGCCGAGGAGAACCTGCAGATTTATCTAAAGAGTACCAAGGCCCAATTGAAGTCTACC
 TGTGCCAGAGGAGGGGAGGAGCCAGACAGTCTGCCAAGGAGGCGCTCCCTCCACCTCGCCCTCAG
 CCCCATTCTGACTGCGCTCAGCCGGGCTGCAGCACTGACTCTGGGATCGCAGAGACCATAGAGCCTTCA
 GTACTGATACCCAGCCGATACCACCGCTCCTCCACCACCTGCCCGCAGCCCATCCCTCGTCCCTT
 TGGAAAGCCACTGACAACATGCTGGAGCTGTACACCCCTTCTACAACAGACTGAGGACCAGTTCCTGTG
 CCCAATCTGGCGGCAACTCCCCCTGATCAGCTTCTCCCCGCCCTGGACCAGGACGAATACCTGTGG
 GGCATGGACGAGGGGAAGGCATCAGTGACCTCTCGACTCCTATGACCTGGGGACCTGTTGATTAAT

ACGCGTACGCGGCCGCTCGAG - GFP Tag - GTTTAA



[View online »](#)

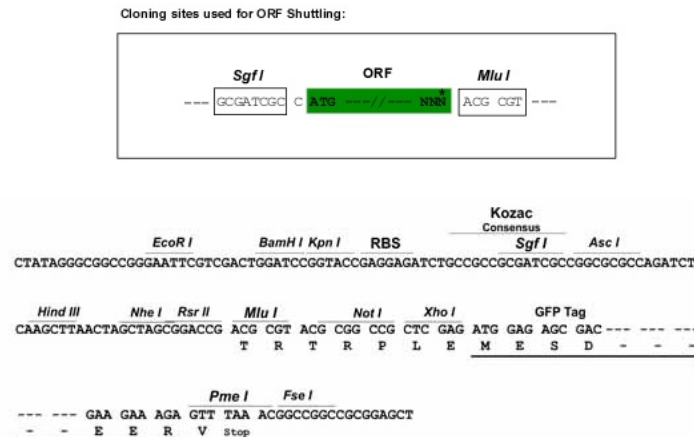
Protein Sequence: >MG207069 representing NM_177733
 Red=Cloning site Green=Tags(s)

MLRAPRTLAPATAQPTKSLPALNPTELWPSGLSSPQLCPATTATYYTSLYTQTPSSVALGTCLDATH
 GPEGQIVRCAPAGRLPAKRKLDLEIGRPTVPEFRTPKGCIRVDGLSPKTPKSPGKTRYDTSLLT
 KKF IYLLSESEDLNLAEEVLDVQKRRIYDITNVLEGIQLIRKSKNNIQWVGREL FEDPTRPSRQQ
 QLGQELKELMNAEQTL DQLIQSCLSFKHLTEDNANKKLAYVTYQDIRAVGNFKEQTVIAVKAPPQTRLE
 VPDRAEENLQIYLKSTQGP IEVYLCPEEQEPDSPAKEALPSTSALSPIPDCAQPGCSTDSGIAETIEPS
 VLIPQPIPPPPPPPLPPAPSLVPLEATDNMLELSHPLLQQTEDQFLSPILAANSPLISFSPPLDQDEYLV
 GMDEGEGISDLFDSYDLGDLIN

TRTRPLE – GFP Tag – V

Restriction Sites: SgfI-MluI

Cloning Scheme:



ACCN: NM_177733

ORF Size: 1329 bp

OTI Disclaimer: The molecular sequence of this clone aligns with the gene accession number as a point of reference only. However, individual transcript sequences of the same gene can differ through naturally occurring variations (e.g. polymorphisms), each with its own valid existence. This clone is substantially in agreement with the reference, but a complete review of all prevailing variants is recommended prior to use. [More info](#)

OTI Annotation: This clone was engineered to express the complete ORF with an expression tag. Expression varies depending on the nature of the gene.

Components: The ORF clone is ion-exchange column purified and shipped in a 2D barcoded Matrix tube containing 10ug of transfection-ready, dried plasmid DNA (reconstitute with 100 ul of water).

Reconstitution Method:

1. Centrifuge at 5,000xg for 5min.
2. Carefully open the tube and add 100ul of sterile water to dissolve the DNA.
3. Close the tube and incubate for 10 minutes at room temperature.
4. Briefly vortex the tube and then do a quick spin (less than 5000xg) to concentrate the liquid at the bottom.
5. Store the suspended plasmid at -20°C. The DNA is stable for at least one year from date of shipping when stored at -20°C.

RefSeq: [NM_177733.7](#), [NP_808401.1](#)

RefSeq Size: 4746 bp

RefSeq ORF: 1332 bp

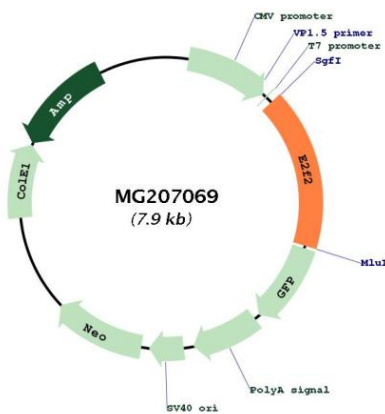
Locus ID: 242705

UniProt ID: [P56931](#)

Cytogenetics: 4 D3

Gene Summary: Transcription activator that binds DNA cooperatively with DP proteins through the E2 recognition site, 5'-TTTC[CG]CGC-3' found in the promoter region of a number of genes whose products are involved in cell cycle regulation or in DNA replication. The DRTF1/E2F complex functions in the control of cell-cycle progression from g1 to s phase. E2F2 binds specifically to RB1 in a cell-cycle dependent manner.[UniProtKB/Swiss-Prot Function]

Product images:



Circular map for MG207069