

Product datasheet for **MG207060**

Ehd2 (BC027084) Mouse Tagged ORF Clone

Product data:

Product Type:	Expression Plasmids
Product Name:	Ehd2 (BC027084) Mouse Tagged ORF Clone
Tag:	TurboGFP
Symbol:	Ehd2
Synonyms:	MGC25606, MGC38650
Mammalian Cell Selection:	Neomycin
Vector:	pCMV6-AC-GFP (PS100010)
E. coli Selection:	Ampicillin (100 ug/mL)
ORF Nucleotide Sequence:	>MG207060 representing BC027084 Red=Cloning site Blue=ORF Green=Tags(s)

TTTTGTAATACGACTCACTATAGGGCGCCGGGAATTCGTCGACTGGATCCGGTACCGAGGAGATCTGCC
GCC**CGATCGCC**

ATGCATGGCGAGACAGAGGGCACCGTGCCCGAAATGCTCTCGTTGTGGACCCAGAGAAGCCCTCCGCA
AACTCAACCCCTTTGGAAACACTTTTCTCAACAGGTTTATGTGCGCCAACTCCCCAACAGGTCTGGA
GAGCATCAGCATCATCGACACGCCTGGCATCCTATCAGGTGCAAAACAGAGAGTGAGCCGTGGCTACGAC
TTCCCAGCTGTCCTGCGCTGGTTTGTGAACGCGTGGACCTCATCATCTTGCTCTTTGATGCCACAAGC
TGGAGATTTCCGATGAATTCTCGGAGGCCATCGGTGCCTTGCCTGGCCACGAGGATAAGATCCGCGTGGT
ACTCAACAAGGCAGACATGGTGGAGACACAGCAGCTGATGCGCGTCTACGGGGCGCTCATGTGGGCGTG
GGCAAGGTGGTGGGCACGCCTGAGGTCCTTCGCGTCTACATTGGCTCCTTCTGGTCCCAGCCGCTCCTTG
TGCCGGACAACCGCGCTCTTTTCGAGCTGGAGGAACAGGACCTCTTCCGTGATATCCAAGCCATACCGCG
CCATGCGGCGCTGCGCAAGCTCAACGACCTAGTGAAACGGGCGCGGCTGGTGCGGGTACACGCTTACATC
ATCAGCTACCTGAAGAAAGAGATGCCCACGGTGTTCGGGAAGGAAAACAAGAAGAAGCAGCTGATCCTGA
AGCTGCCTGTATCTTTGCGAAGATCCAGCTGGAGCACCACATCTCCCCTGGAGACTTTCCTGACTGCCA
GAAGATGCAGGAGCTGTTGATGGCAGATGACTTCAACAAGTCCACTCGCTAAAGCCGAAGCTGCTGGAG
GCGCTAGATGACATGCTGGCCCAAGACATTGCCAAGCTTATGCCGCTGCTTCGGCAGGAGGAGCTGGAGA
GTGTCGAGGCTGGAGTGCAGGGCGGTGCGTTTGAGGGCACCCGCATGGGCCCTTCGTGGAGCGGGGCC
TGATGAAGCAATAGAGGATGGTGAAGGAGGCTCAGAAGATGATGCCGAATGGGTGGTGACCAAGGACAAG
TCCAAATACGATGAAATCTTCTACAACCTTAGCTCCTGCTGATGGCAAGCTGAGTGGCTCTAAGGCCAAAA
CCTGGATGGTGGGCACAAAGCTACCCAACCTCTGTGCTGGGAGAATCTGGAAGCTGAGCGATGTCGACCG
AGACGGCATGCTGGATGATGAGGAGTTTGCCTTGCCAGCCACCTATTGAGGCTAAGCTCGAAGGCCAT
GGTCTACCCACCAACCTACCCCGCCGCTGGTGCCGCTTCTAAGCGACGACAGAAGGGCTCTGCTGAA

AGCGGACCGACGCTACGCGGCCGCTCGAG - GFP Tag - GTTTAA



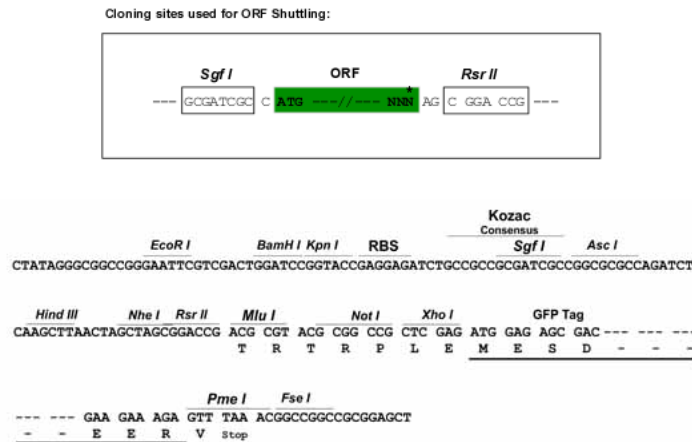
Protein Sequence: >MG207060 representing BC027084
 Red=Cloning site Green=Tags(s)

MHGETEGTVPGNALVVDPEKPFRLNPFNGNTFLNRFMCAQLPNQVLESISIIDTPGILSGAKQVRVSRGYD
 FPAVLRWFAERVDLIILLFDAHKLEISDEFSEAIGALRGHEDKIRVVLNKADMVETQQLMRVYGALMWAL
 GKVVGTPEVLRVYIGSFSWSQPLLVPDNRRLEFELEEQLFRDIQGLPRHAALRKLNDLVKRARLVRVHAYI
 ISYLKEMPTVFGKENKKKQLILKLPVIFAKIQLEHHISPGDFPDCQKMQELLMAHDFTKFHSLKPKLLE
 ALDDMLAQDIAKLMPLLRQEELSVAGVQGGAFEGTRMGPFVERGPDEAIEDGEEGSEDDAEWVVTDKD
 SKYDEIFYNLAPADGKLSGSKAKTWMVGTKLNSVLGRIWKLSDVDRDGMLDDEEFALASHLIEAKLEGH
 GLPTNLPRLVPPSKRRQKGSAAE

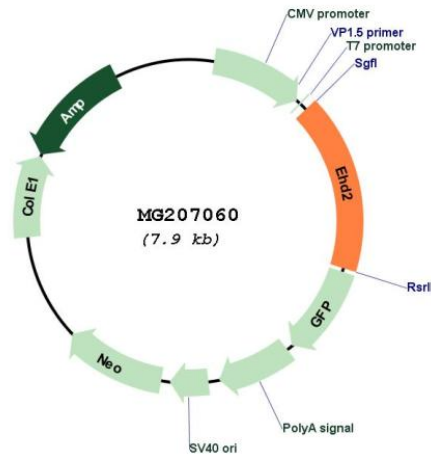
SGPTRRRLE - GFP Tag - V

Restriction Sites: SgfI-RsrII

Cloning Scheme:



Plasmid Map:



ACCN: BC027084

ORF Size:	1332 bp
OTI Disclaimer:	The molecular sequence of this clone aligns with the gene accession number as a point of reference only. However, individual transcript sequences of the same gene can differ through naturally occurring variations (e.g. polymorphisms), each with its own valid existence. This clone is substantially in agreement with the reference, but a complete review of all prevailing variants is recommended prior to use. More info
OTI Annotation:	This clone was engineered to express the complete ORF with an expression tag. Expression varies depending on the nature of the gene.
Components:	The ORF clone is ion-exchange column purified and shipped in a 2D barcoded Matrix tube containing 10ug of transfection-ready, dried plasmid DNA (reconstitute with 100 ul of water).
Reconstitution Method:	<ol style="list-style-type: none">1. Centrifuge at 5,000xg for 5min.2. Carefully open the tube and add 100ul of sterile water to dissolve the DNA.3. Close the tube and incubate for 10 minutes at room temperature.4. Briefly vortex the tube and then do a quick spin (less than 5000xg) to concentrate the liquid at the bottom.5. Store the suspended plasmid at -20°C. The DNA is stable for at least one year from date of shipping when stored at -20°C.
RefSeq:	BC027084.1
RefSeq Size:	2717 bp
RefSeq ORF:	1331 bp
Locus ID:	259300
Cytogenetics:	7 8.65 cM
Gene Summary:	ATP- and membrane-binding protein that controls membrane reorganization/tubulation upon ATP hydrolysis (PubMed:24508342). Plays a role in membrane trafficking between the plasma membrane and endosomes. Important for the internalization of GLUT4 (PubMed:14676205). Required for fusion of myoblasts to skeletal muscle myotubes. Required for normal translocation of FER1L5 to the plasma membrane (PubMed:18502764, PubMed:21177873). Regulates the equilibrium between cell surface-associated and cell surface-dissociated caveolae by constraining caveolae at the cell membrane (By similarity). [UniProtKB/Swiss-Prot Function]