

Product datasheet for **MG207045**

Mef2c (BC026841) Mouse Tagged ORF Clone

Product data:

Product Type: Expression Plasmids
Product Name: Mef2c (BC026841) Mouse Tagged ORF Clone
Tag: TurboGFP
Symbol: Mef2c
Synonyms: 5430401D19Rik; 9930028G15Rik; AV011172; Mef2
Mammalian Cell Selection: Neomycin
Vector: pCMV6-AC-GFP (PS100010)
E. coli Selection: Ampicillin (100 ug/mL)
ORF Nucleotide Sequence: >MG207045 representing BC026841
 Red=Cloning site Blue=ORF Green=Tags(s)

TTTTGTAATACGACTCACTATAGGGCGGCCGGAATTCGTCGACTGGATCCGGTACCGAGGAGATCTGCC
 GCC**CGATCGCC**

ATGGGGAGAAAAAGATTACAGTTACGAGGATAATGGATGAGCGTAACAGACAGGTGACTTTTACGAAGA
 GGAAATTTGGATTGATGAAGAAGGCTTATGAGCTGAGCGTGCTGTGCGACTGTGAGATTGCACTGATCAT
 CTTCAACAGCACCAACAAGCTGTCCAGTACGCCAGCACTGACATGGATAAAGGTGTTGCTCAAGTACACC
 GAGTACAACGAGCCGACGAGAGCCGGACAACTCAGACATTGTGGAGACATTGAGAAAGAAGGGCCTCA
 ATGGCTGTGACAGCCAGATCCCGATGCAGACGATTCAGTAGGTCACAGCCCTGAGTCTGAGGACAAGTA
 CAGGAAAATTAACGAAGATATTGATCTAATGATCAGCAGGCAAAGATTGTGTGCTGTTCCACCTCCCAGC
 TTTGAGATGCCAGTTACCATCCCAGTGTCCAGCCATAACAGTTTGGTGTACAGCAATCCTGTGACACAC
 TGGGAAACCCCAATCTTCTGCCACTGGCCACCCGCTCTCTGCAGAGGAATAGTATGTCTCCTGGTAAAC
 ACATAGACCTCCAAGTGCAGGTAACACAGGCGGTCTGATGGGCGGAGATCTGACATCCCGTGCAGGCACC
 AGCGCAGGGAATGGATACGGCAACCCCGGAACCTACCAGGCCTGCTGGTCTCACCTGGTAACTGAACA
 AGAATATACAAGCCAAATCTCCTCCCCCTATGAATCTAGGAATGAATAATCGTAAGCCAGATCTCCGCGT
 TCTTATCCCACCTGGCAGCAAGAACACGATGCCATCAGTGTCTGAGGATGTGGATCTGCTGTTGAATCAA
 AGGATAAATAACTCCCAGTCGGCTCAGTCATTGGCTACCCCGGTGGTTCCGTAGCAACTCCTACTTTAC
 CAGGACAAGGAATGGGAGGATATCCATCAGCCATTTCAACAACATATGGTACTGAGTACTCTCTGAGTAG
 CGCAGATCTGTACTCTGTCTGTCTGGCTTCAACACTGCCAGTGCAGCTCCACCTCGGCTCTGTAAGTGGCTGG
 CAGCAGCAGCACCTACATAACATGCCGCCATCTGCCCTCAGTCAGTTGGGAGACCGTACCACCACCCCTT
 CGAGATACCCACAACACACCACGCGCCACGAGGCGGGGAGGTCTCCTGTTGACAGCTTGAGCAGCTGTAG
 CAGTTCCTACGATGGGAGCGACCGAGAGGATCACCGGAACGAATCCACTCCCCATTGGACTCACCAGA
 CCTTCGCCGACGAAAGGGAAAGTCTTCAGTCAAGCGCATGCGACTCTCTGAAGGATGGGCAACA

ACGCGTACGCGGCCGCTCGAG - GFP Tag - GTTTAA



[View online »](#)

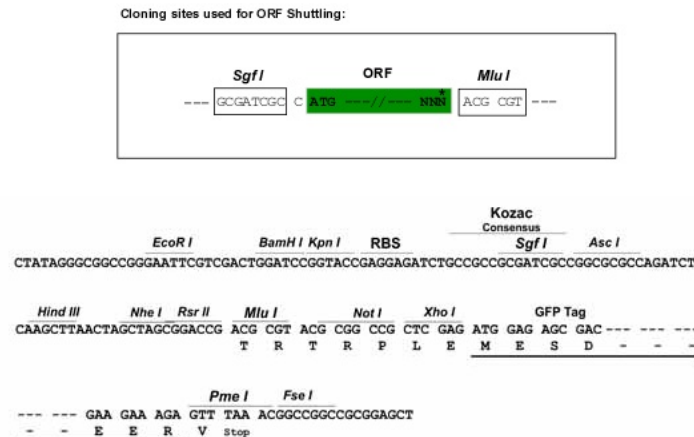
Protein Sequence: >MG207045 representing BC026841
 Red=Cloning site Green=Tags(s)

MGRKKIQITRIMDERNRQVTFTRKRFGLMKKAYELSVLCDCEIALIIFNSTNKL FQYASTDMDKVLLKYT
 EYNPHESTRNSDIVETLRKKGLNGCDSPDPDADDSVGHSPESDKYRKINEDIDLMSRQRLCAVPPPS
 FEMPVTIPVSSHNSLVSNPVSTLGNPNLLPLAHPSLQRNSMSPGVTHRPPSAGNTGGLMGDDLTSAGT
 SAGNGYGNPRNSPGLLVSPGNLNKNIQAKSPPPMNLGMNNRKPDLRVLIPPGSKNTMPSVSEDVDLLLQ
 RINNSQSAQSLATPVVSVATPTLPGQGMGYPSAISTTYGTEYSLSSADLSSLGNTASALHLGSVTGW
 QQQLHNMPPSALSQDRTTTPSRYPQHTTRHEAGRSPVDSLSSCSSYDGSREDHRNEFHSPIGLTR
 PSPDERESPSVKRMRLSEGWAT

TRTRPLE – GFP Tag – V

Restriction Sites: SgfI-MluI

Cloning Scheme:



ACCN: BC026841

ORF Size: 1326 bp

OTI Disclaimer: The molecular sequence of this clone aligns with the gene accession number as a point of reference only. However, individual transcript sequences of the same gene can differ through naturally occurring variations (e.g. polymorphisms), each with its own valid existence. This clone is substantially in agreement with the reference, but a complete review of all prevailing variants is recommended prior to use. [More info](#)

OTI Annotation: This clone was engineered to express the complete ORF with an expression tag. Expression varies depending on the nature of the gene.

Components: The ORF clone is ion-exchange column purified and shipped in a 2D barcoded Matrix tube containing 10ug of transfection-ready, dried plasmid DNA (reconstitute with 100 ul of water).

Reconstitution Method:

1. Centrifuge at 5,000xg for 5min.
2. Carefully open the tube and add 100ul of sterile water to dissolve the DNA.
3. Close the tube and incubate for 10 minutes at room temperature.
4. Briefly vortex the tube and then do a quick spin (less than 5000xg) to concentrate the liquid at the bottom.
5. Store the suspended plasmid at -20°C. The DNA is stable for at least one year from date of shipping when stored at -20°C.

RefSeq: [BC026841](#), [AAH26841](#)

RefSeq Size: 3479 bp

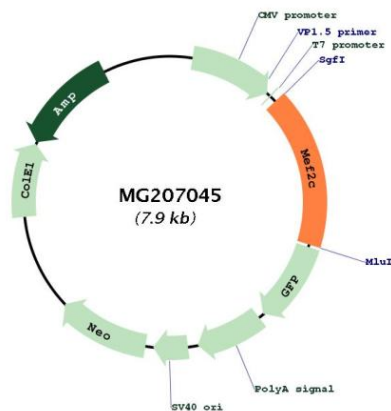
RefSeq ORF: 1328 bp

Locus ID: 17260

Cytogenetics: 13 43.68 cM

Gene Summary: Transcription activator which binds specifically to the MEF2 element present in the regulatory regions of many muscle-specific genes. Controls cardiac morphogenesis and myogenesis, and is also involved in vascular development. Enhances transcriptional activation mediated by SOX18 (PubMed:11554755). May also be involved in neurogenesis and in the development of cortical architecture. Isoforms that lack the repressor domain are more active than isoform 1 (By similarity). Plays an essential role in hippocampal-dependent learning and memory by suppressing the number of excitatory synapses and thus regulating basal and evoked synaptic transmission. Crucial for normal neuronal development, distribution, and electrical activity in the neocortex. Necessary for proper development of megakaryocytes and platelets and for bone marrow B-lymphopoiesis. Required for B-cell survival and proliferation in response to BCR stimulation, efficient IgG1 antibody responses to T-cell-dependent antigens and for normal induction of germinal center B-cells.[UniProtKB/Swiss-Prot Function]

Product images:



Circular map for MG207045