

Product datasheet for **MG207039**

2010317E24Rik (BC070477) Mouse Tagged ORF Clone

Product data:

Product Type:	Expression Plasmids
Product Name:	2010317E24Rik (BC070477) Mouse Tagged ORF Clone
Tag:	TurboGFP
Symbol:	2010317E24Rik
Synonyms:	ang, RP23-47P18.4
Mammalian Cell Selection:	Neomycin
Vector:	pCMV6-AC-GFP (PS100010)
E. coli Selection:	Ampicillin (100 ug/mL)
ORF Nucleotide Sequence:	>MG207039 representing BC070477 Red=Cloning site Blue=ORF Green=Tags(s)

TTTTGTAATACGACTCACTATAGGGCGGCCGGAATTCGTCGACTGGATCCGGTACCGAGGAGATCTGCC
GCC**CGATCGCC**

ATGGCCGAGCGTGGCCGCTATCGCACGCTGCGCCGCTCCTAGTACAGAGGGGTACCGCGAGCCTTTC
TCCAGAGCCTGCGCACCTCTTCGACATCCTGGACGACCGGCAACGCGGTACGTGCACCTGCGGGAGAT
CGAGTCCCCTGGCAAGGTGCAGACGCACGCGAGCTGCCGTGCGGCGTGTGAGGGCTGCGCCAGGTG
GCCCGGCCAATGGCTACCTGACCTTCGAGCGTTTCGTAGCGGGCTTGCACCTCGCTGCTGAAAGCCG
ACGGCGCCAGCGGGATCAGGCACGCGTGCAGCCGCGCTGGGGACCAGTCGTCCTGCAGCAGCGCT
GATGTTTCGACCCGCGATGAGCCGCGGACTGTCTGGAGAGAAAGCCTCTGCCTCTGAGTGCCTGCGCT
GCTTCTGGTGGCCCAAGTGGCACCTCCCGAACCTGAGCTGTTATGTGTCCCGGTGGAGCGCGCTCCT
GCCCCACAGAGACCGAGCGGCCCTGAGCAAGCGCTGGAGCAAATCCCCAGCGCGGATTTGGGTGCAGC
AGCCTGTAAGACCTGGGCAAGGGCACAGGTGAAGCCCGCAGGCTCCACGGGCCGAGGCGAGCGTTCGA
AGGCATACCATCACCAATGGTGTGGACTGCAGCCTGTTGAAGCAGATGAAGGAGTTAGACCAGGAACAGG
AGGTGCTTCTGCAGGGCCTGGAGATGATGGCACGGGCGGAGACTGGTACCAGCAGCAGCTGCAGCGTGT
GCAGGAACGTGAGCGCCGCTGAGCCAGAGCAGAGCTGCTGCAGACTTTGGGGCTGAAGGAAGCCCCCGC
CCTCTGGGAGGTTGCTGCCAAAGTACAGGAGGTGGCCGCTGCTGGGGGAGCTGTTGACTGCAGCT
GCTCTGGCAGAGTGAGTGTCTGGAGGCTGCCTGGCATCCCTTGTCTTGTCTGGATGCTATGCCAGGA
AAGGTCTGGTCACTGTGTACTTCCACAGGCTCTGCCTTCGTCCTCTTTAGGGCCCTGGGCCCTCCCTC
ACCCTCAACTCCAGTCTGGCAGCAACAGACCATCCTCATGCTGAAAGAACAGAACCAGGCTTCTCACTCAG
GTGAGGTGTGGGAAGATGGGGCTGGGGCTGGAGGCCAGCAAACCCTGACCGCTGCCTGCCTGCTCGCC
TGCCAGGAGGTGACTGATAAGAGTGAGCGCATCACGAGCTGGAGCAGGAGAAGTCTGCACTCATCAAG
CAGCTGTTTGGGCCGAGCGCTCAGCCAGCAGGATTCGGACCTCTGGACTCCACTTTTCATC

AGCGGACCGACGCTACGCGGCCGCTCGAG - GFP Tag - GTTTAA



[View online »](#)

Protein Sequence: >MG207039 representing BC070477
Red=Cloning site Green=Tags(s)

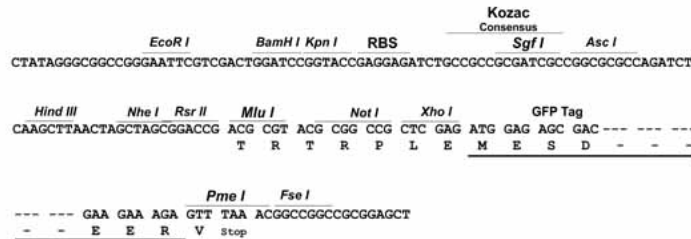
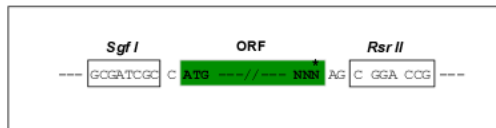
MAERGRLSHAAPAPSTEGLPRAFLQSLRTLFDILDDRQRGYVHLREIESRWQGADARELPCGVLEGLRQV
 APANGYLTFERFVAGLRTSLLKADGGQRDQARVAARPGDQSSLQQLMFAPADEPRTVLERKPLPLSACP
 ASGGPSGTSRNPPELLCVPVEAASCPTETERPLSKALEQIPADLAAAACKTLGKGTGEARQAPRARGERR
 RHTITNGVDCSLLKQMKELDQEVEVLLQGLEMMARGRDWYQQQLQRVQERQRRLSQSRAAADFGAEGSPR
 PLGRLLPKVQEVARCLGELLTAACSGRVSALEAAWHPLSLFWMLCQERSGSLCTSTGSAFVLFRAPGPSL
 TLNSSLAATDHPHAERTEPASHSGEVWEDGAGAGGPANPDRLPACSPAQEVTDKSERITQLEQEKSALIK
 QLFEARALSQQDSGPLDSTFI

SGPTRRRLE - GFP Tag - V

Restriction Sites: SgfI-RsrII

Cloning Scheme:

Cloning sites used for ORF Shuttling:



ACCN: BC070477

ORF Size: 1325 bp

OTI Disclaimer: The molecular sequence of this clone aligns with the gene accession number as a point of reference only. However, individual transcript sequences of the same gene can differ through naturally occurring variations (e.g. polymorphisms), each with its own valid existence. This clone is substantially in agreement with the reference, but a complete review of all prevailing variants is recommended prior to use. [More info](#)

OTI Annotation: This clone was engineered to express the complete ORF with an expression tag. Expression varies depending on the nature of the gene.

Components: The ORF clone is ion-exchange column purified and shipped in a 2D barcoded Matrix tube containing 10ug of transfection-ready, dried plasmid DNA (reconstitute with 100 ul of water).

Reconstitution Method:

1. Centrifuge at 5,000xg for 5min.
2. Carefully open the tube and add 100ul of sterile water to dissolve the DNA.
3. Close the tube and incubate for 10 minutes at room temperature.
4. Briefly vortex the tube and then do a quick spin (less than 5000xg) to concentrate the liquid at the bottom.
5. Store the suspended plasmid at -20°C. The DNA is stable for at least one year from date of shipping when stored at -20°C.

RefSeq: [BC070477](#), [AAH70477](#)

RefSeq Size: 1779 bp

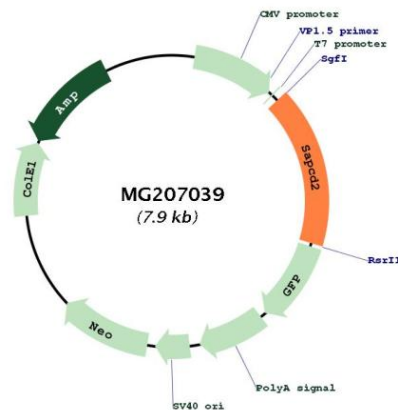
RefSeq ORF: 1325 bp

Locus ID: 72080

Cytogenetics: 2 A3

Gene Summary: Plays a role in planar mitotic spindle orientation in retinal progenitor cells (RPCs) and promotes the production of symmetric terminal divisions (PubMed:26766442). Negatively regulates the mitotic apical cortex localization of GPSM2 (By similarity). Involved also in positive regulation of cell proliferation and tumor cell growth (By similarity).[UniProtKB/Swiss-Prot Function]

Product images:



Circular map for MG207039