

Product datasheet for **MG207038**

Eed (NM_021876) Mouse Tagged ORF Clone

Product data:

Product Type:	Expression Plasmids
Product Name:	Eed (NM_021876) Mouse Tagged ORF Clone
Tag:	TurboGFP
Symbol:	Eed
Synonyms:	ENSMUSG00000039373; I(7)5Rn; I7Rn5; lusk
Mammalian Cell Selection:	Neomycin
Vector:	pCMV6-AC-GFP (PS100010)
E. coli Selection:	Ampicillin (100 ug/mL)
ORF Nucleotide Sequence:	>MG207038 representing NM_021876 Red=Cloning site Blue=ORF Green=Tags(s)

TTTTGTAATACGACTCACTATAGGGCGGCCGGAATTCGTCGACTGGATCCGGTACCGAGGAGATCTGCC
GCC**CGATCGCC**

ATGTCGAGAGGGAAAGTGTGCGACTGCGCCGGCGGGAACAGACATGCCCGGCCAAGAAGCAGAAGTTGA
GCAGCGACGAGAACAGCAACCCGGACCTCTCGGGAGACGAAAATGACGATGCTGTGAGATTGAGAGTGG
CACAAACAGAACGCCCGGACACGCCACAAATACGCCAAATGCACCAGGAAGGAAAAGCTGGGGAAAG
GGAAAATGGAAGTCAAAGAAATGCAAAATTTCTTTCAAATGTGTGAACAGCCTCAAGGAAGATCATAACC
AGCCATTGTTGGAGTTCAGTTAACTGGCACAGTAAAGAAGGAGACCCTCTGGTGTTCGCAACTGTGGG
AAGCAACAGAGTAACCTTATACGAATGCCATTCACAGGGGAGATACGGTTATTGCAATCCTATGTAGAT
GCTGATGCAGATGAAAACTTTTACACTTGTGCATGGACCTATGATAGCAACACCAGCCACCTCTATTAG
CAGTTGCTGGATCTAGAGGCATTATAAGAATAATTAATCCTATAACAATGCAGTGTATAAAGCACTATGT
TGGCCATGGAAATGCTATCAATGAGCTGAAATTCACCCACGAGACCCAAACCTTCTCCTGTGAGTAAAGT
AAAGATCATGCTTACGGTTATGGAATATCAAACAGACACTCTGTGGCAATATTCGGAGGTGTGGAAAG
GGCACAGAGATGAAGTTCGAGTGTGATTATGATCTTTGGGTGAAAAAATAATGTCCTGTGGTATGGA
TCACTCTTTAACTGTGGAGAATCAACTCAAAGAGGATGATGAATGCAATTAAGGAGTCTTATGATTAT
AACCCAAACAAAATAACAGGCCATTTATTTCCAGAAAATCCACTTTCTGACTTTTACCAGAGACA
TACATAGGAATTATGTTGATTGTGCGATGGTTAGGCGATTTGATACTTTCCAAGTCTTGTGAAAATGC
CATTGTATGCTGAAAACCTGGCAAAATGGAGGATGATATAGATAAAAATTAACCTAGTGAGTCTAATGTG
ACTATTCTGGGCGATTTGATTACAGCCAGTGTGACATTTGGTACATGAGGTTTTCTATGGATTTCTGGC
AAAAGATGCTTGCATTGGCAATCAGGTTGGCAAACTGTATGTTGGGATTTAGAAGTAGAAGATCCTCA
TAAAGCCAAATGCACAACACTGACCCATCATAAATGTGGCGGGCTATTCGACAAACCAGTTTCAGTAGG
GATAGCAGCATCCTCATAGCTGTCTGCGATGATGCCAGCATTGGCGATGGGATCGACTTCGA

ACGCGTACGCGGCCGCTCGAG - GFP Tag - GTTTAA



[View online »](#)

Protein Sequence: >MG207038 representing NM_021876
 Red=Cloning site Green=Tags(s)

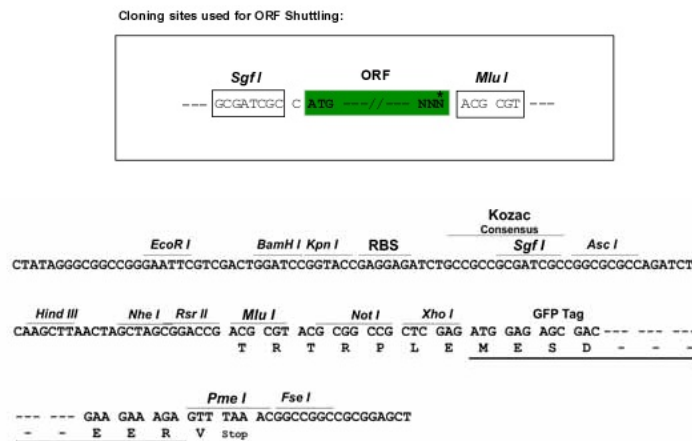
```
MSEREVSTAPAGTDMPAAKKQKLSSDENSNPDLSGDENDDAVSIESGTNTERPDTPNTNPAPGRKSWGK
GKWKSKKCKYFVKCVNSLKEDHNQPLFGVQFNWHSKEGDPLVFATVGSNRVTLYECHSQGEIRLLQSYVD
ADADENFYTCAWTYDSNTSHPLAVAGSRGIIRIINPITMQCIKHVYVGHGNAINELKFHPRDPNLLLSVS
KDHALRLWNIQDTLVAIFGGVEGHRDEVLSADYDLLGEKIMSCGMDHSLKLRINSKRMMNAIKESYDY
NPNKTNRPFIISQKIHFPDFSTRDIHRNYDCVRWLGDLILSKSCENAIVCWKPGKMEDDIDKIKPSESNV
TILGRFDYSQCDIWMRF SMDFWQKMLALGNQVGKLYVWDLEVEDPHKAKCTTLTHHKCGAAIRQTSFSR
DSSILIAVCDASIWRDRLR
```

TRTRPLE - GFP Tag - V

Chromatograms: https://cdn.origene.com/chromatograms/ja3431_e09.zip

Restriction Sites: SgfI-MluI

Cloning Scheme:



ACCN: NM_021876

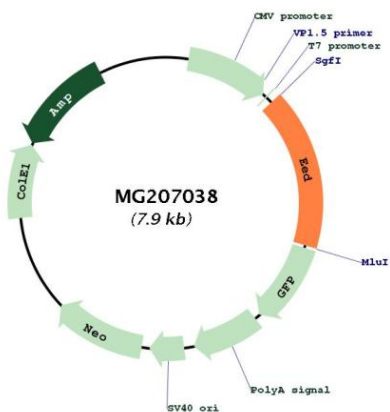
ORF Size: 1323 bp

OTI Disclaimer: Due to the inherent nature of this plasmid, standard methods to replicate additional amounts of DNA in E. coli are highly likely to result in mutations and/or rearrangements. Therefore, OriGene does not guarantee the capability to replicate this plasmid DNA. Additional amounts of DNA can be purchased from OriGene with batch-specific, full-sequence verification at a reduced cost. Please contact our customer care team at custsupport@origene.com or by calling 301.340.3188 option 3 for pricing and delivery.

The molecular sequence of this clone aligns with the gene accession number as a point of reference only. However, individual transcript sequences of the same gene can differ through naturally occurring variations (e.g. polymorphisms), each with its own valid existence. This clone is substantially in agreement with the reference, but a complete review of all prevailing variants is recommended prior to use. [More info](#)

OTI Annotation:	This clone was engineered to express the complete ORF with an expression tag. Expression varies depending on the nature of the gene.
Components:	The ORF clone is ion-exchange column purified and shipped in a 2D barcoded Matrix tube containing 10ug of transfection-ready, dried plasmid DNA (reconstitute with 100 ul of water).
Reconstitution Method:	<ol style="list-style-type: none">1. Centrifuge at 5,000xg for 5min.2. Carefully open the tube and add 100ul of sterile water to dissolve the DNA.3. Close the tube and incubate for 10 minutes at room temperature.4. Briefly vortex the tube and then do a quick spin (less than 5000xg) to concentrate the liquid at the bottom.5. Store the suspended plasmid at -20°C. The DNA is stable for at least one year from date of shipping when stored at -20°C.
RefSeq:	NM_021876.3
RefSeq Size:	2060 bp
RefSeq ORF:	1326 bp
Locus ID:	13626
UniProt ID:	Q921E6
Cytogenetics:	7
Gene Summary:	<p>Polycomb group (PcG) protein. Component of the PRC2/EED-EZH2 complex, which methylates 'Lys-9' and 'Lys-27' of histone H3, leading to transcriptional repression of the affected target gene. Also recognizes 'Lys-26' trimethylated histone H1 with the effect of inhibiting PRC2 complex methyltransferase activity on nucleosomal histone H3 'Lys-27', whereas H3 'Lys-27' recognition has the opposite effect, enabling the propagation of this repressive mark (By similarity). The PRC2/EED-EZH2 complex may also serve as a recruiting platform for DNA methyltransferases, thereby linking two epigenetic repression systems (By similarity). Genes repressed by the PRC2/EED-EZH2 complex include HOXA7, HOXB6 and HOXC8. Plays a role in X chromosome inactivation (XCI), in which one of the two X chromosomes in female mammals is transcriptionally silenced to equalize X-linked gene dosage with XY males. Required for stable maintenance of XCI in both embryonic and extraembryonic tissues. May prevent transcriptional activation of facultative heterochromatin during differentiation. Required for development of secondary trophoblast giant cells during placental development. May regulate hippocampal synaptic plasticity in the developing brain.[UniProtKB/Swiss-Prot Function]</p>

Product images:



Circular map for MG207038