

## Product datasheet for **MG207001**

### Ppard (NM\_011145) Mouse Tagged ORF Clone

#### Product data:

Product Type:	Expression Plasmids
Product Name:	Ppard (NM_011145) Mouse Tagged ORF Clone
Tag:	TurboGFP
Symbol:	Ppard
Synonyms:	Nr1c2; NUC-1; NUC1; PPAR-beta; PPAR-delta; Pparb; Pparb/d; PPARdelta; PPAR[b]
Mammalian Cell Selection:	Neomycin
Vector:	pCMV6-AC-GFP (PS100010)
E. coli Selection:	Ampicillin (100 ug/mL)
ORF Nucleotide Sequence:	>MG207001 representing NM_011145 Red=Cloning site Blue=ORF Green=Tags(s)

TTTTGTAATACGACTCACTATAGGGCGGCCGGAATTCGTCGACTGGATCCGGTACCGAGGAGATCTGCC  
GCC**CGATCGCC**

ATGGAACAGCCACAGGAGGAGACCCCTGAGGCCGGGAAGAGGAGAAAGAGGAAGTGCCATGGGTGACG  
GAGCCCCGGAGCTCAATGGGGGACCAGAACACACGCTTCTTCCAGCAGCTGTGCAGACCTCTCCAGAA  
TTCTCCCTTCTCCTGCTGGACCAGCTGCAGATGGGCTGTGATGGGGCTCAGGCGGCAGCCTCAAC  
ATGGAATGTCGGGTGTGCGGGGACAAGGCTCGGGCTTCCACTACGGGTCCACGCGTGCAGGGGTGCA  
AGGGCTTCTTCCGCGGACAATCCGCATGAAGCTCGAGTATGAGAAGTGGATCGGATCTGCAAGATCCA  
GAAGAAGAACCGCAACAAGTGTCACTACTGCCGCTTCCAGAAGTGCCTGGCACTCGGCATGTGCAACAAC  
GCTATCCGCTTTGGACGGATGCCGGAGGCCGAGAAGAGGAAGCTGGTGGCGGGGCTGACTGCCAGCGAGG  
GGTGCCAGCACAAACCCAGCTGGCCGACCTGAAGGCCTTCTTAAGCACATCTACAACGCCTACCTGAA  
AACTTCAACATGACCAAAAAGAAGGCCCGGAGCATCCTACCGGCAAGTCCAGCCACAACGCACCCCTTT  
GTCATCCACGACATCGAGACACTGTGGCAGGCAGAGAAGGGCCTGGTGTGGAAACAGCTGGTGAACGGGC  
TGCCGCCCTACAACGAGATCAGTGTGCACGTGTTCTACCGCTGCCAGTCCACCACAGTGGAGACAGTCCG  
AGAGCTCACCGAGTTCGCAAGAACATCCCAACTTCAGCAGCCTCTTCTCAATGACCAGGTGACCCTC  
CTCAAGTATGGCGTGCACGAGGCCATCTTTGCCATGCTGGCTCCATCGTCAACAAGACGGGCTGCTGG  
TGGCCAACGGCAGTGGCTTCGTACCCACGAGTCTTGGCAAGTCTCCGCAAGCCCTTCAGTGACATCAT  
TGAGCCCAAGTTCGAGTTTGCTGTCAAGTTCAATGCGCTGGAGCTCGATGACAGTACCTGGCGCTCTTC  
ATCGCGGCCATCATTTTGTGTGGAGACCGCCAGGCCTCATGAATGTGCCCCAGGTAGAAGCCATCCAGG  
ACACCATCTGCGGGCTCTAGAATTCCATCTGCAGGTCAACCACCCTGACAGCCAGTACCTCTCCCAA  
GCTGCTGCAGAAGATGGCAGACCTGCGGCAGCTGGTCACTGAGCATGCCAGATGATGCAGTGGCTAAAG  
AAGACGGAGAGTGAACCTTGTGCACCCCTGCTCCAGGAAATCTACAAGGACATGTAC

AGCGGACCGACGCTACGCGGCCGCTCGAG - GFP Tag - GTTTAA



[View online »](#)

**Protein Sequence:** >MG207001 representing NM\_011145  
 Red=Cloning site Green=Tags(s)

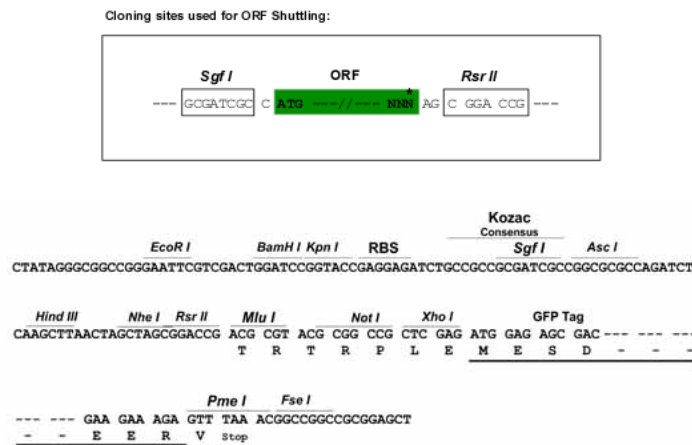
MEQPQEETPEAREEEKEEVAMGDGAPELNGGPEHTLPSSSCADLSQNSSPSSLLDQLQMGC DGASGGSLN  
 MECRVCGDKASGFHYGVHACEGCKGFFRRTIRMKLEYEKCDRICKIQKKNRNKCCYCRFQKCLALGMSHN  
 AIRFGRMPEAEKRKLVAGLTASEGCQHNPLADLKAFSKHIYNAYLKNFNMTKKARSILTGKSSHNAPF  
 VIHDIETLWQAEKGLVWKQLVNLPPYNEISVHVFYRCQSTTVE TVRELTEFAKNIPNFSSFLNDQVTL  
 LKYGVHEAIFAMLASIVNKDGLLVANGSGFVTHEFLRSLRKPFSDIIEPKFEFAVKFNALELDSDLALF  
 IAAIILCGDRPGLMNPQVEAIQDTILRALEFHLQVNH PDSQYLFPKLLQKMADLRQLVTEHAQMMQWLK  
 KTESETLLHPLLQEIKDMY

SGP TRRRLE - GFP Tag - V

**Chromatograms:** [https://cdn.origene.com/chromatograms/ja3514\\_e10.zip](https://cdn.origene.com/chromatograms/ja3514_e10.zip)

**Restriction Sites:** SgfI-RsrII

**Cloning Scheme:**



**ACCN:** NM\_011145

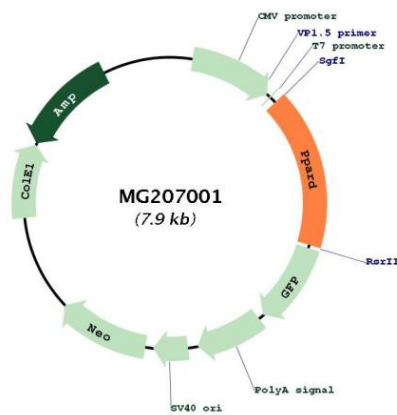
**ORF Size:** 1320 bp

**OTI Disclaimer:** Due to the inherent nature of this plasmid, standard methods to replicate additional amounts of DNA in E. coli are highly likely to result in mutations and/or rearrangements. Therefore, OriGene does not guarantee the capability to replicate this plasmid DNA. Additional amounts of DNA can be purchased from OriGene with batch-specific, full-sequence verification at a reduced cost. Please contact our customer care team at [custsupport@origene.com](mailto:custsupport@origene.com) or by calling 301.340.3188 option 3 for pricing and delivery.

The molecular sequence of this clone aligns with the gene accession number as a point of reference only. However, individual transcript sequences of the same gene can differ through naturally occurring variations (e.g. polymorphisms), each with its own valid existence. This clone is substantially in agreement with the reference, but a complete review of all prevailing variants is recommended prior to use. [More info](#)

<b>OTI Annotation:</b>	This clone was engineered to express the complete ORF with an expression tag. Expression varies depending on the nature of the gene.
<b>Components:</b>	The ORF clone is ion-exchange column purified and shipped in a 2D barcoded Matrix tube containing 10ug of transfection-ready, dried plasmid DNA (reconstitute with 100 ul of water).
<b>Reconstitution Method:</b>	<ol style="list-style-type: none"> <li>1. Centrifuge at 5,000xg for 5min.</li> <li>2. Carefully open the tube and add 100ul of sterile water to dissolve the DNA.</li> <li>3. Close the tube and incubate for 10 minutes at room temperature.</li> <li>4. Briefly vortex the tube and then do a quick spin (less than 5000xg) to concentrate the liquid at the bottom.</li> <li>5. Store the suspended plasmid at -20°C. The DNA is stable for at least one year from date of shipping when stored at -20°C.</li> </ol>
<b>RefSeq:</b>	<u>NM_011145.2</u>
<b>RefSeq Size:</b>	3240 bp
<b>RefSeq ORF:</b>	1323 bp
<b>Locus ID:</b>	19015
<b>UniProt ID:</b>	<u>P35396</u>
<b>Cytogenetics:</b>	17 14.64 cM
<b>Gene Summary:</b>	Ligand-activated transcription factor. Receptor that binds peroxisome proliferators such as hypolipidemic drugs and fatty acids. Has a preference for poly-unsaturated fatty acids, such as gamma-linoleic acid and eicosapentanoic acid. Once activated by a ligand, the receptor binds to promoter elements of target genes. Regulates the peroxisomal beta-oxidation pathway of fatty acids. Functions as transcription activator for the acyl-CoA oxidase gene. Decreases expression of NPC1L1 once activated by a ligand (By similarity).[UniProtKB/Swiss-Prot Function]

**Product images:**



Circular map for MG207001