

Product datasheet for **MG206993**

Runx1 (BC069929) Mouse Tagged ORF Clone

Product data:

Product Type:	Expression Plasmids
Product Name:	Runx1 (BC069929) Mouse Tagged ORF Clone
Tag:	TurboGFP
Symbol:	Runx1
Synonyms:	AML1, Pebp2a2
Mammalian Cell Selection:	Neomycin
Vector:	pCMV6-AC-GFP (PS100010)
E. coli Selection:	Ampicillin (100 ug/mL)
ORF Nucleotide Sequence:	>MG206993 representing BC069929 Red=Cloning site Blue=ORF Green=Tags(s)

GACGTTGTATACGACTCCTATAGGGCGGCCGGAATTCGTCGACTGGATCCGGTACCGAGGAGATCTGCC
GCC**GGCGCGCC**

ATGGCTTCAGACAGCATTTTTGAGTCATTTCCCTCATATCCACAGTGCTTCATGAGAGATGCCAGCACGA
GCCGCGCTTCACGCGCCTCCACCGCGCTGAGCCCCGGAAGATGAGCGAGGCGCTGCCGCTGGGCGC
CCCGGATGGCGCGCCGCTGGCCAGCAAGCTGAGGAGCGGCGACCGCAGCATGGTGGAGGTACTAGCT
GACCACCCGCGGAGCTAGTGCGCACCGACAGCCCAACTTCCTCTGCTCCGTGCTACCCACTACTGGC
GCTGCAACAAGACCCTGCCATCGCTTTCAAGGTGGTGGCACTGGGGGACGTCCCGGATGGCACTCTGGT
CACCGTCATGGCAGGCAACGATGAAACTACTCGGCAGAAGTGGAAATGCTACCGCGGCCATGAAGAAC
CAGGTAGCGAGATTCAACGACCTCAGGTTTGTCGGCGGAGCGGTAGAGGCAAGAGCTTCACTCTGACCA
TCACCGTCTTTACAAATCCGCCACAAGTTGCCACCTACCATAGAGCCATCAAAATCACAGTGGACGGCCC
CCGAGAACCCGAAATGCCAGGCAGATCCAGCCGTCGCCACCGTGGTCTATGACCAGTCTACCACTAC
CTGGGATCCATCACCTCTTCTCTGTCCACCCAGCGACACCCATTTACCCGCGCGTGGCAGCGGCATGA
CCAGCCTCTGCGAGAACTTTCCAGTCGACTCTCAACGGCTCCGACCTGACCGCCTTCGGCGACCCAGC
CCAGTTCCCTACTCTGCCGTCATCTCAGACCCGCGCATGCACTACCCAGGCGCCTCACCTACTCGCCG
CCGCTCAGTCCGGCATCGGCATCGGCATGTCAGCCATGAGCTCGCCTCTCGCTACCAACACTACTGCC
GCCGCCCTACCCGCTCCTCACAGGCGCAGGCCGGGCCCTCCAGACCGGCTCGCCTCCTACCATCTA
TACTACGGCGCCTCGGCCGTTCTACAGTTCTCCATGGTGGCGGCGAGCGATCGCCCCGCGCATCC
TGCCGCCCTGCACCAACGCATCCACCGCGCCGCGCTGCTCAACCCAGCCTCCCGAGCCAGAGCGACGT
GGTGGAGACCGAGGGCAGCCATAGCAACTCGCCACCAACATGCCCCCGCGCGCCTGGAGGAGGCCGTG
TGGCGGCCCTACTGAGCTGAGCGCCATCGCCATCGAGGGACTGGGCTGCCGTCATGCACAGACCCCGC
CAGGAGGGCCCTTGGAGGCCACCAGGAAGAATCCCGGAGGAACTGTGAATGCTTC

ACGCGTACGCGGCCGCTCGAG - GFP Tag - GTTTAA



[View online >](#)

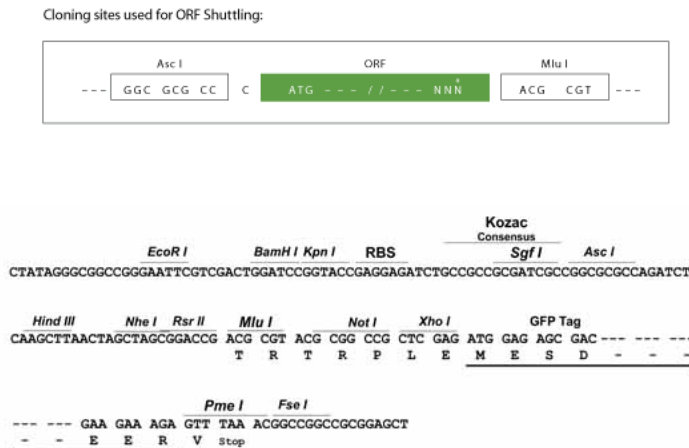
Protein Sequence: >MG206993 representing BC069929
Red=Cloning site Green=Tags(s)

MASDSIFESFPSYPQCFMRDASTSRRFTPPSTALSPGKMSEALPLGAPDGGAAALASKLRSGDRSMVEVLA
 DHPGELVRTDSPNFLCSVLPTHWRCKTLPIAFKVVVALGDVPDGLTVVMAGNDENYSaelRNATAAMKN
 QVARFNDLRFVGRSGRGSFTLITVFTNPPQVATYHRAIKITVDGPREPRNARQIQSPSPWSYDQSYQY
 LGSITSSSVHPATPISPGRASGMTLSAELSSRLSTAPDLTAFGDPRQFPTLPSISDPRMHYPGAFYSP
 PVTSGIGIGMSAMSSPLATTPTCRRPTAPHRRRPGPSRPARPPTIYTTAPRPVPTSSPWWAASDRPRAS
 CRPAPHTPPAPRCSTPASPARATWWRPRAAIATRPTCPRAWRRPCGGPTELSAIAIEGLGLPSMHRPR
 QEGPWRPPGRIPEGNCECF

TRTRPLE - GFP Tag - V

Restriction Sites: AscI-MluI

Cloning Scheme:



ACCN: BC069929

ORF Size: 1319 bp

OTI Disclaimer: The molecular sequence of this clone aligns with the gene accession number as a point of reference only. However, individual transcript sequences of the same gene can differ through naturally occurring variations (e.g. polymorphisms), each with its own valid existence. This clone is substantially in agreement with the reference, but a complete review of all prevailing variants is recommended prior to use. [More info](#)

OTI Annotation: This clone was engineered to express the complete ORF with an expression tag. Expression varies depending on the nature of the gene.

Components: The ORF clone is ion-exchange column purified and shipped in a 2D barcoded Matrix tube containing 10ug of transfection-ready, dried plasmid DNA (reconstitute with 100 ul of water).

Reconstitution Method:

1. Centrifuge at 5,000xg for 5min.
2. Carefully open the tube and add 100ul of sterile water to dissolve the DNA.
3. Close the tube and incubate for 10 minutes at room temperature.
4. Briefly vortex the tube and then do a quick spin (less than 5000xg) to concentrate the liquid at the bottom.
5. Store the suspended plasmid at -20°C. The DNA is stable for at least one year from date of shipping when stored at -20°C.

RefSeq: [BC069929](#), [AAH69929](#)

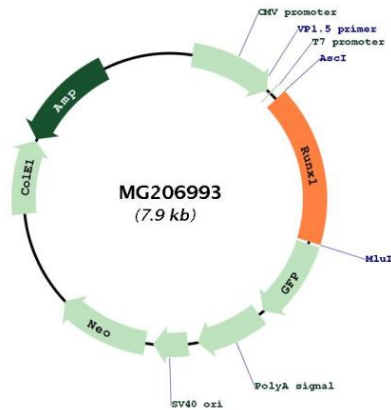
RefSeq Size: 1784 bp

RefSeq ORF: 1319 bp

Locus ID: 12394

Cytogenetics: 16 53.7 cM

Product images:



Circular map for MG206993