

## Product datasheet for **MG206978**

### Tcp10a (NM\_011553) Mouse Tagged ORF Clone

#### Product data:

Product Type:	Expression Plasmids
Product Name:	Tcp10a (NM_011553) Mouse Tagged ORF Clone
Tag:	TurboGFP
Symbol:	Tcp10a
Synonyms:	D17Leh66A; D17Leh66aa; Gm10326; T66A-a; Tcp-10a
Mammalian Cell Selection:	Neomycin
Vector:	pCMV6-AC-GFP (PS100010)
E. coli Selection:	Ampicillin (100 ug/mL)
ORF Nucleotide Sequence:	>MG206978 representing NM_011553 Red=Cloning site Blue=ORF Green=Tags(s)

TTTTGTAATACGACTCACTATAGGGCGGCCGGAATTCGTCGACTGGATCCGGTACCGAGGAGATCTGCC  
GCC**CGATCGCC**

ATGTTGGAGGATCTGAGTCAAGGAAAAGGGTCCAACCATGAGAAGAGGAAGATGGAGAGCACAGCCAGA  
TCACTGAGGAAGACAGCAAGCTTGATGAGGTTGTGGGCTGCAGAAGCAGATCTGTGACCTTTGGGACAGA  
GCTCACAAGACAATCATCTTGGTGGTGCATAGCTCACAAGACCTCCAAAGCCAGATCGATGCTCTGATA  
AAGGAGAACCAGGAGATCCGTGCGGAGCTGAAGACCTTGAAGAAGCAGGATGCGGAGGCCACCAAAGCCT  
GTATAGGCTCGCCACCCCGCAAGAGCAAGCAACTCTGCCAGTGTACATAAAGATAGAGGGAAGTGA  
TTCCGAGAGGACAACCTCATGGGATGAAAGAGATGAGCTTCTGGAAGTCTCCAAACAGAAAGCACAATG  
GCCACCGAGGAACAGACTCCCAGGATGAAATGCTGTCTTTTACATCTGTGGATGAAAAGTTATACACA  
TGTCTTCCAAATTTCTGCAAAGAAGCTTGGGCAGAATGTCACCAGAACCCTGTCTGACAGCACATTCT  
GGACACAGAGTCACTGGCTGACATCTGGTCTCAATCCAGAGACTTCGGACGGTGAAGTCTCTCGCAT  
GCTCAAGCAAGCAGGGTCATCCCTTGTCTTCCCAATGCACTGTGGGTGCAGAATATTCACAAAGT  
CAAGAGCTCCTAAAGAAATACAGCAAACCTCGGACACTACAAAGACTGATGAGACAAAGGAAAAGCAACA  
CCCAATGGCAAGGTGGAGCGGATGCTCAGCGACGGGCGAACCATCATCACCTTCCCAATGGAACCAGG  
AAGGAGTCAGTGTGACAAGAAGACCACCTCATCAGTCTTAAACGGTGACATGAAGAAGATCAAGT  
CCAATCAGAAAGTGATTTATTATTATGCGGATGCACAAACAATGCACACAACCTACCCAGATGGTGTGA  
AGTGGTGCAGTTTCTAACAAGTGGACTGAAAAATTCTACCCGGATGGCTCCAAGGAAACCGTGTTCCT  
GATGGGACAGTGAACGGCTTAAGGATGGATGTGAAGAGACGGTGTTCCTGATGGGACATTTGTGACAG  
TGAAGAGGAACGGAGACAAAACCATCATGTTTCAGCAACGGAGAGAAAGAAATCCACACGGCCAGGTTCAA  
GCGGAAGGAATCCAGATGGCACCACCAAGACTGTGTATTGCAATGGCTGCCAGGAGACTAAGTATGCC  
TCAGGGAGGGTCAGGGTCAAAGATGAGAAGGGAAGTGTATCCTGGACTGGAAG

**ACGCGT**ACGCGGCCGCTCGAG - GFP Tag - GTTTAA



[View online >](#)

**Protein Sequence:** >MG206978 representing NM\_011553  
 Red=Cloning site Green=Tags(s)

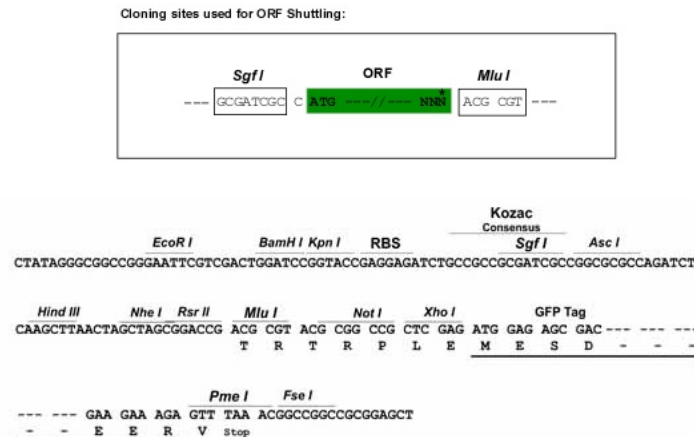
MLEDLSQGKGSNHEKRKMESTAQITEEDSKLDEVVGLQKQICDLGTELTRQSSWWCIAHKDLQSQIDALI  
 KENQEIRAEKTLKKQDAEATKACIGSPTPARASNTLPVYIKIEGTDSSERTTSWDERDELSGSPNRSTM  
 ATGGTDSQDEMLSFTSVDEKVIHMSSKFLQRSLGRMSPEPLSDSTFLDTESLADIWSSNPETSDGELLH  
 AQASRVIPCFSPNALWVQNIPTKSRAPKEIQQTSDDTTKDETKEKQHPNGKVERMLSDGRTIITFPNGTR  
 KEISADKKTLLIRFFNGDMKKIKSNQKVIYYADAQTMHTTYPDGEVQVFPNKWTEKFYPDGSKETVFP  
 DGTVKRLKDGCEETVFPDGTFTVKRNGDKTIFMSNGEKEIHTARFKRKEFPDGTTKTVYCNGCQETKYA  
 SGRVRVKDEKGTVILDWK

TRTRPLE - GFP Tag - V

**Restriction Sites:**

SgfI-MluI

**Cloning Scheme:**



**ACCN:** NM\_011553

**ORF Size:** 1314 bp

**OTI Disclaimer:** The molecular sequence of this clone aligns with the gene accession number as a point of reference only. However, individual transcript sequences of the same gene can differ through naturally occurring variations (e.g. polymorphisms), each with its own valid existence. This clone is substantially in agreement with the reference, but a complete review of all prevailing variants is recommended prior to use. [More info](#)

**OTI Annotation:** This clone was engineered to express the complete ORF with an expression tag. Expression varies depending on the nature of the gene.

**Components:** The ORF clone is ion-exchange column purified and shipped in a 2D barcoded Matrix tube containing 10ug of transfection-ready, dried plasmid DNA (reconstitute with 100 ul of water).

- Reconstitution Method:**
1. Centrifuge at 5,000xg for 5min.
  2. Carefully open the tube and add 100ul of sterile water to dissolve the DNA.
  3. Close the tube and incubate for 10 minutes at room temperature.
  4. Briefly vortex the tube and then do a quick spin (less than 5000xg) to concentrate the liquid at the bottom.
  5. Store the suspended plasmid at -20°C. The DNA is stable for at least one year from date of shipping when stored at -20°C.

**RefSeq:** [NM\\_011553.4](#), [NP\\_035683.2](#)

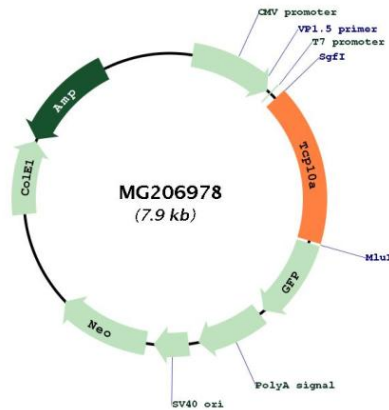
**RefSeq Size:** 2314 bp

**RefSeq ORF:** 1317 bp

**Locus ID:** 21461

**Cytogenetics:** 17 A1

**Product images:**



Circular map for MG206978