

Product datasheet for **MG206970**

1700010I14Rik (BC061078) Mouse Tagged ORF Clone

Product data:

Product Type:	Expression Plasmids
Product Name:	1700010I14Rik (BC061078) Mouse Tagged ORF Clone
Tag:	TurboGFP
Symbol:	1700010I14Rik
Mammalian Cell Selection:	Neomycin
Vector:	pCMV6-AC-GFP (PS100010)
E. coli Selection:	Ampicillin (100 ug/mL)
ORF Nucleotide Sequence:	>MG206970 representing BC061078 Red=Cloning site Blue=ORF Green=Tags(s)

TTTTGTAATACGACTCACTATAGGGCGGCCGGAATTCGTCGACTGGATCCGGTACCGAGGAGATCTGCC
GCC**CGATCGCC**

ATGGCTGAGGATCAGGAACCTGACTTTTACCTAAAGTGGAAAGCACTGTGAGAAACCGGTGTTAAGACTC
TAAGCAACTTAAGGAACTCCTGTCCCACTCCAGGAGGACCACAGGAAGGACATCAGTGTGTACATTTT
AGGACACTGAACCCAGGAAGCTCTACAAGCCACCTGAGACCATTTTCCAGCACTGGCGCAATTCAC
AGGACATGGGAGAAACCCACCCACTCCACACCCACCATCCCCCGGCCTCCAGAAACAAAGAAGTATCAG
AGATGAAGGACGCTTGGGTTCACTTTACAGTGAGCACAGCCCTGCATCCCGATGACACACACAACCGCC
ACTGTTCAAGTACTGAACCCACGCGTACAGGCCTCCCGTGCTCTCAAAGATGGTGCCTCCGCGCTCTG
CAGGAGGAGGAGAAGAACTGAAGGAAAGACTTGCATTTTCTCGGAAAAACACATGAAGGAAGAACTCA
GGCTGCCTGAGATGAAAGTGCTCAGATACCCAGAGGTGGTATCCAGCCGCCAGTGTCCAGGTCTGCCCC
AGGCAGGGATGTGTACCGTTACATCAGCCCTACCTAGCTGGTATAACGAAAGCCGACAGCTACAAGAAG
TTCCTGAGTTTCAAAGAGAAGTGTGGCAAAGGAAGAAACCTGAAGTATGACTTACGGGGAGCAAGG
TGGCTGTGGCCATGAGAACAGACTGAAGGAGGAGCTCCAGAAGATATGCACCTGCAACCCCTCAGCAGTT
CAACAGGTTGCAGGTCTTTGGGAAATCTTTGAGGATATTTGCAACAGCTCTTTGATCTTTGGGGATCTA
CTGAAAGAGATTAAGGATGAATATGAACCTACATGGCAGCTCTCCTGGACTCACAGCCACAGCGCAGT
ATCAGCGGCTCTTGGCTGAAGTCAAGGGGTTGGAGAACAGCCCCAGGCCAGCTGTGACATTGACCAAGC
CAAGGAGCACCTGAGGAAGGTCCAGCAGGCTTATCTAGAAGCCTTGGAGCACAACGACAACTCAGGAAT
GAGCTGGAGGCTGAGAGCTTATTGCTGCAGTCTGCTAAGGAAAAAGCAGCTAATGGGAAAATGAAGGATG
AGAAGGAACTGACTCTGGTCGAAAAGGTGGAGAAGAGGAGGTGTGAAATCTTTGAGAAAATGGATGAGAT
TAAAGCGCTTGAGAAACACATCAAAGAAAACATGGTGCCTCGGGAGTATTTAAGATCGCAGAGAGTGCC
CTTAAAAGCATAGAGGATGAAGCCATAAAGTTGGAAACATCAAACAGAATCT

AGCGGACCGACGCGTACGCGGCCGCTCGAG - GFP Tag - GTTTAA



[View online »](#)

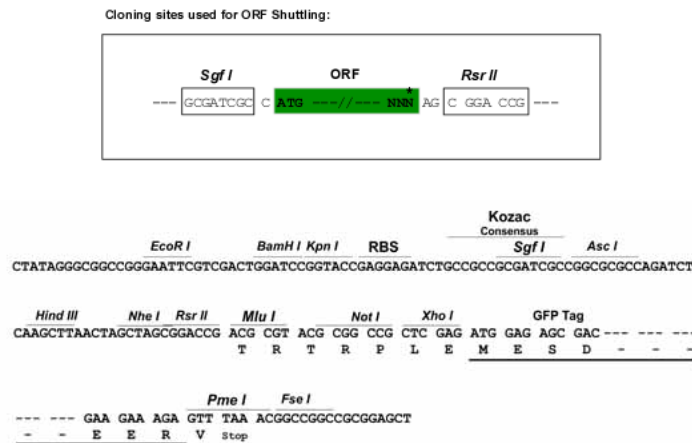
Protein Sequence: >MG206970 representing BC061078
 Red=Cloning site Green=Tags(s)

MAEDQEPDFYLKWKHCEKPGVKTLNLRKLLSQLQEDHRKDISVYISGHLNPRKLYKPPETIFQHWRNSN
 RTWEKPTHSTPTIPPASRNKEVSEMKDAWVHFTVSTALHPDDHTHTPLFRYLNPRVQASRALKDGASAAL
 QEEEEKELKERLAFSREKHMKEELRLPEMKVLRYPEVSSRQC SRSAPGRDVYRYISPYLAGITKADSYKK
 FLSFQREVLAKEETLKYDFTGSKVAVAHENRLKEELQKICTCNPQQFNRLQVFEIFEDICNSSLIFGDL
 LKEIKDEYELYMAALLDSOPTAQYQRLLAEVRLGLENRPRSCDIDQAKEHLRKYVQAYLEALEHNDKLRN
 ELEAESLLLQSAKEKAANGMKMDEKELTLVEKVEKRRCEIFEKLEIKALEKHIKENMMVHSGVFKIAESG
 LKSIEDEAIKLETSNRI

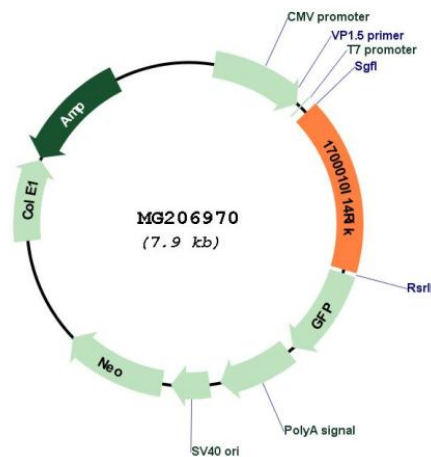
SGPTRRRLE - GFP Tag - V

Restriction Sites: SgfI-RsrII

Cloning Scheme:



Plasmid Map:



ACCN:	BC061078
ORF Size:	1312 bp
OTI Disclaimer:	The molecular sequence of this clone aligns with the gene accession number as a point of reference only. However, individual transcript sequences of the same gene can differ through naturally occurring variations (e.g. polymorphisms), each with its own valid existence. This clone is substantially in agreement with the reference, but a complete review of all prevailing variants is recommended prior to use. More info
OTI Annotation:	This clone was engineered to express the complete ORF with an expression tag. Expression varies depending on the nature of the gene.
Components:	The ORF clone is ion-exchange column purified and shipped in a 2D barcoded Matrix tube containing 10ug of transfection-ready, dried plasmid DNA (reconstitute with 100 ul of water).
Reconstitution Method:	<ol style="list-style-type: none">1. Centrifuge at 5,000xg for 5min.2. Carefully open the tube and add 100ul of sterile water to dissolve the DNA.3. Close the tube and incubate for 10 minutes at room temperature.4. Briefly vortex the tube and then do a quick spin (less than 5000xg) to concentrate the liquid at the bottom.5. Store the suspended plasmid at -20°C. The DNA is stable for at least one year from date of shipping when stored at -20°C.
RefSeq:	BC061078.1
RefSeq Size:	1356 bp
RefSeq ORF:	1313 bp
Locus ID:	66931
Cytogenetics:	17 A1