

Product datasheet for **MG206962**

Tfap2a (NM_011547) Mouse Tagged ORF Clone

Product data:

Product Type: Expression Plasmids
Product Name: Tfap2a (NM_011547) Mouse Tagged ORF Clone
Tag: TurboGFP
Symbol: Tfap2a
Synonyms: A; AP; AP-2; Ap-2 (a); Ap2; AP2alpha; Ap2tf; Tcfa; Tcfap2a
Mammalian Cell Selection: Neomycin
Vector: pCMV6-AC-GFP (PS100010)
E. coli Selection: Ampicillin (100 ug/mL)
ORF Nucleotide Sequence: >MG206962 representing NM_011547
 Red=Cloning site Blue=ORF Green=Tags(s)

TTTTGTAATACGACTCACTATAGGGCGCCGGGAATTCGTCGACTGGATCCGGTACCGAGGAGATCTGCC
 GCC**CGATCGCC**

ATGCTTTGGAAACTGACGGATAATATCAAGTACGAAGACTGCGAGGACCGTCACGACGGCACCAGCAACG
 GGACGGCAGGTTGCCCCAGCTGGGCACGTAGGTCAATCTTCTACACCAGCGCCCCGCCGCTGTCCCA
 CACCCCTAATGCCGACTCCAGCCTCCCTACTTCCCCCGCCCTACCAGCCTATCTACCCCCAGTCGCAA
 GATCCTTACTCCCAGTCAACGACCCCTACAGCCTGAATCCTCTGCACGCCAGCCGAGCCGAGCCGAGCACC
 CGGGCTGGCCCGGTGAGGCGAGAGCCAGGAATCTGGGCTTTACACACACACCGGGGCTTACCCACCA
 ACTGTCCGGCCTGGACCTCGCAGGGACTATCGGCGGCACGAGGACCTTTGCACGGCCCGCAGGGCTC
 GGCTCTGGGCTCGGGGACCTCCCGATCCACTCCTTACCTCACGCCATCGAGGACGTCCTCGCAGCTAGAAG
 ACCCGGTATTAACATCCCAGATCAAAGTGAATTAAGAAAGGCCCGTGTCCCTGTCCAAGTCCAACAG
 CAATGCTGTCTCCGCCATCCCTATTAACAAGGACAACCTCTTCGGTGGCGTGGTAAACCCCAACGAAGTC
 TTCTGTTCAAGTCCGGGTCGCTGTCTCCTCAGCTCCACCTCGAAGTACAAGGTCACGGTGGCGGAG
 TACAGCGCGCCTCTCACCGCCGAGTGTCTTAACCGCTCGCTCTGGCGGAGTACTGCGGAGAGCGAA
 GTCTAAGAATGGAGGGAGATCTTAAGAGAAAAACTGGACAAGATAGGATTGAATCTGCCAGCAGGGAGA
 CGTAAAGCTGCCAACGTTACCCCTCAGTCACTAGTGAAGGAGAAGCCGTCACCTAGCCAGGGGACT
 TTGGGTACGTGTGCGAAACTGAATTTCTGCAAAGCAGTAGCAGAATTTCTCAACCGACAACATTCGGA
 TCCCAATGAGCAAGTGGCAAGAAAAAATGCTCCTGGCCACAAAAACAGATCTGCAAAGAGTTCACTGAC
 CTGCTGGCTCAGGACCGATCTCCCTGGGGAACCTCGCGGCCAATCCTATCCTGGAGCCTGGCATCCAGA
 GTTGCTTGACCACTTCAACCTCATCTCCATGGCTTCGGCAGCCCGCGGTGTGTGCAGCGGTTACGGC
 CCTGCAGAACTATCTCACCGAGGCCCTCAAGGCCATGGACAAAATGTACCTCAGCAACAACCCCAACAGC
 CACACGGACAACAGCGCCAAAAGCAGTGACAAAGAAGAGAAACACAGAAAG

AGCGGACCGACGCGTACGCGGCCGCTCGAG - GFP Tag - GTTTAA



[View online >](#)

Protein Sequence: >MG206962 representing NM_011547
Red=Cloning site Green=Tags(s)

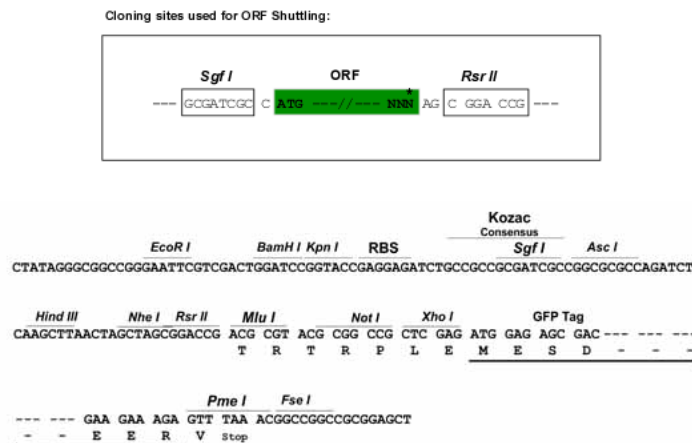
MLWKLTDNIKYEDCEDRHDGTSNGTARLPQLGTVGQSSYTSAPPLSHTPNADFQPPYFPPPYQPIYPQSQ
 DPYSHVNDPYSLNPLHAQPQHPGWPGQRQSQESGLLHTHRGLPHQLSGLDPRRDYRRHEDLLHGPHGL
 GSGLGDLPIHSLPHAIEDVPHVEDPGINIPDQTVIKKGPVSLSKSNSNAVSAIPINKDNLFGGVVNPNEV
 FCSVPGRLLSSTSKYKVTVAEVQRRLSPPECLNASLLGGVLRRAKSKNGGRSLREKLDKIGLNLPAGR
 RKAANVTLLTSLVEGEAVHLARDFGYVCETEFPAKAVAEFLNRQHSDPNEQVARKNMLLATKQICKEFTD
 LLAQDRSPLGNSRPNPILEPGIQSCLTHFNLI SHGF GSPAVCAAVTALQNYL TEALKAMDKMYLSNPNNS
 HTDNSAKSSDKEEKHRK

SGPTRRRLE – GFP Tag – V

Chromatograms: https://cdn.origene.com/chromatograms/ja1969_a05.zip

Restriction Sites: SgfI-RsrII

Cloning Scheme:



ACCN: NM_011547

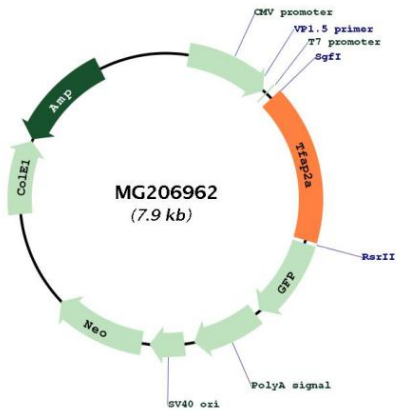
ORF Size: 1311 bp

OTI Disclaimer: Due to the inherent nature of this plasmid, standard methods to replicate additional amounts of DNA in E. coli are highly likely to result in mutations and/or rearrangements. Therefore, OriGene does not guarantee the capability to replicate this plasmid DNA. Additional amounts of DNA can be purchased from OriGene with batch-specific, full-sequence verification at a reduced cost. Please contact our customer care team at custsupport@origene.com or by calling 301.340.3188 option 3 for pricing and delivery.

The molecular sequence of this clone aligns with the gene accession number as a point of reference only. However, individual transcript sequences of the same gene can differ through naturally occurring variations (e.g. polymorphisms), each with its own valid existence. This clone is substantially in agreement with the reference, but a complete review of all prevailing variants is recommended prior to use. [More info](#)

| | |
|-------------------------------|------------------------------------------------------------------------------------------------------------------------------------------------------------------------------------------------------------------------------------------------------------------------------------------------------------------------------------------------------------------------------------------------------------------------------------------------------------------------------------------------------------------------------------------------------------------------------------------------------------------------------------------------------------------------|
| OTI Annotation: | This clone was engineered to express the complete ORF with an expression tag. Expression varies depending on the nature of the gene. |
| Components: | The ORF clone is ion-exchange column purified and shipped in a 2D barcoded Matrix tube containing 10ug of transfection-ready, dried plasmid DNA (reconstitute with 100 ul of water). |
| Reconstitution Method: | <ol style="list-style-type: none">1. Centrifuge at 5,000xg for 5min.2. Carefully open the tube and add 100ul of sterile water to dissolve the DNA.3. Close the tube and incubate for 10 minutes at room temperature.4. Briefly vortex the tube and then do a quick spin (less than 5000xg) to concentrate the liquid at the bottom.5. Store the suspended plasmid at -20°C. The DNA is stable for at least one year from date of shipping when stored at -20°C. |
| RefSeq: | NM_011547.2 , NP_035677.2 |
| RefSeq Size: | 2863 bp |
| RefSeq ORF: | 1320 bp |
| Locus ID: | 21418 |
| UniProt ID: | P34056 |
| Cytogenetics: | 13 20.01 cM |
| Gene Summary: | This gene is a member of the activator protein 2 (AP-2) transcription factor family. The protein encoded by this gene can act as both an activator and repressor of gene transcription, and plays an important role in early embryogenesis, specifically in cranial development. This protein forms both homodimers and heterodimers, and binds to a GC-rich consensus sequence found in some promoters and enhancers. Disruption of this gene causes perinatal death, with neural tube, craniofacial, and limb mesenchyme defects. Alternative splicing results in multiple transcript variants that encode multiple protein isoforms. [provided by RefSeq, Sep 2014] |

Product images:



Circular map for MG206962