

Product datasheet for **MG206945**

Tcf2 (BC025189) Mouse Tagged ORF Clone

Product data:

Product Type:	Expression Plasmids
Product Name:	Tcf2 (BC025189) Mouse Tagged ORF Clone
Tag:	TurboGFP
Symbol:	Tcf2
Synonyms:	vHNF1, HNF-1Beta, Hnf1beta
Mammalian Cell Selection:	Neomycin
Vector:	pCMV6-AC-GFP (PS100010)
E. coli Selection:	Ampicillin (100 ug/mL)
ORF Nucleotide Sequence:	>MG206945 representing BC025189 Red=Cloning site Blue=ORF Green=Tags(s)

TTTTGTAATACGACTCACTATAGGGCGGCCGGAATTCGTCGACTGGATCCGGTACCGAGGAGATCTGCC
GCC**CGATCGCC**

ATGATCAAGGGATACATGCAACAGCACAATATCCCCAGAGGGAGGTGGTCGATGTCACAGGCCTGAACC
AATCCCACCTCTCAACACCTCAACAAGGGCACCCCATGAAGACCCAGAAGAGAGCTGCCCTGTACAC
TTGGTACGTCAGAAAGCAACGGGAGATCCTCCGACAGTTCAACCAGACAGTCCAGAGCTCTGAAACATG
ACAGACAAAAGCAGTCAGGATCAGCTGCTTTTCTTTCCAGAGTTCAGTCAACAGAACCAGGGGCTG
GGCAGTCGGAGGACACCTGCTCCGAGCCACCAACAAGAAGATGCGCCGAACCGGTTTAAATGGGGGCC
CGCATCCCAGCAAATTTTGTACCAGGCCTACGACCGGCAAAAGAATCCCAGCAAGGAAGAGAGGGAGGCC
TTAGTGGAGGAGTGTAAACAGGGCAGAATGTTTGAACGAGGGGTCTCCCTTCCAAGGCCACGGCCTAG
GCTCCAACCTGGTACGGAGGTCGGTGTCTAACAACCGCCGGAAGGAAGAGGCGTTTCAG
GCAGAAGCTGGCCATGGATGCCTATAGCTCCAACCAGACGCACAACCTGAACCCCTGCTCACCCATGGC
TCCCCTCACCATCAGCCAAGCTCCTCTCCACCAACAAGATGTCAGGAGTGCCTACAACAGCCGGGAA
ACAATGAGGTCACTTCTCTCGACAATCAGTCACCATGGTAACAGTGCCATGGTACCAGCCAGTCGGT
TTTACAGCAAGTCTCCCCAGCCAGCCTGGACCCAGGCCACAGTCTCCTCTCACCTGACAGTAAAAATGCAG
ATCACAGTGTGGGAGGAGGACTGCCCTCCGTCAGCACCTTGACGAATATCCACAGCCTCTCCCACCACA
ATCCCCAGCAATCTCAGAACCTCATGACCCCTGTCTGGAGTCATGGCCATTGCACAGAGCCCTCAA
CACCTCCAAGCCAGGGTGTCCCGTCAATTAACAGTGTGGCTAGCAGCCTGGCAGCCCTACAGCCGTC
CAGTTCTCTCAACAGCTGCACAGCCCTACCAGCAGCCCTCATGCAGCAGAGCCAGGCAGTCACATGG
CCCAGCAGCCCTCATGGCCGGGTGACTCAGCTACAGAATCCCACATGTATGCACATAAGCAGGAACC
CCCCAGTATCCCACACCTCCCGTTCATCTGCAATGGTGGTCACAGATACCAGTAGCATCAACACT
CTCACCAGCATGTCTCCAGTAAACAGTGTCCACTGCAAGCCTGG

ACGCGTACGCGGCCGCTCGAG - GFP Tag - GTTTAA



[View online »](#)

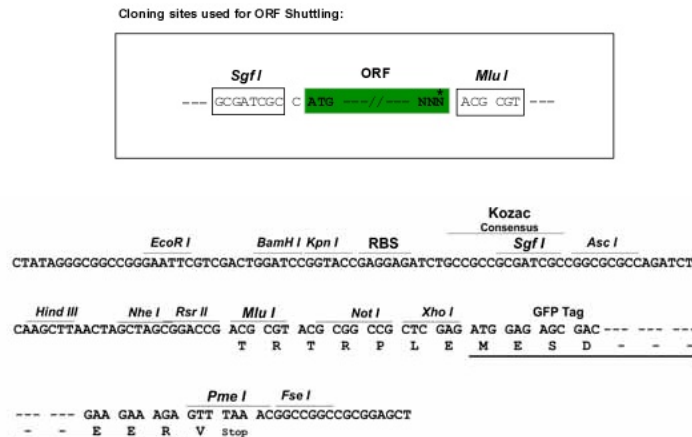
Protein Sequence: >MG206945 representing BC025189
Red=Cloning site Green=Tags(s)

MIKGYMQQHNIPOREVVDVTGLNQSHLSQHLNKGTPMKTQKRAALYTWYVRKQREILRQFNQTVQSSGNM
 TDKSSQDQLLFLFPEFSQQNQPGQSEDTCSPTNKKMRRNRFKWGPASQQILYQAYDRQKNPSKEEREA
 LVEECNRAECLQRGVSPSKAHGLGSNLVTEVRVYNWFANRRKEEAFRQKLAMDAYSNNQTHLNPLLTHG
 SPHHQPSSPPNKMSGVRYNQPGNNEVTSSTISHHGNSAMVTSQSVLQQVSPASLDPGHSLLSPDSKMQ
 ITVSGGGLPPVSTLTNIHSLSHHNPQQSQNLIMTPLSGVMAIAQSLNLSQAQGVVINSVASSLAALQPV
 QFSQQLHSPHQQLMQQSPGSHMAQQPFMAAVTQLQNSHMYAHKQEPQYSHTSRFPSAMVVDTSSINT
 LTMSSSKQCPLQAW

TRTRPLE - GFP Tag - V

Restriction Sites: SgfI-MluI

Cloning Scheme:



ACCN: BC025189

ORF Size: 1307 bp

OTI Disclaimer: The molecular sequence of this clone aligns with the gene accession number as a point of reference only. However, individual transcript sequences of the same gene can differ through naturally occurring variations (e.g. polymorphisms), each with its own valid existence. This clone is substantially in agreement with the reference, but a complete review of all prevailing variants is recommended prior to use. [More info](#)

OTI Annotation: This clone was engineered to express the complete ORF with an expression tag. Expression varies depending on the nature of the gene.

Components: The ORF clone is ion-exchange column purified and shipped in a 2D barcoded Matrix tube containing 10ug of transfection-ready, dried plasmid DNA (reconstitute with 100 ul of water).

Reconstitution Method:

1. Centrifuge at 5,000xg for 5min.
2. Carefully open the tube and add 100ul of sterile water to dissolve the DNA.
3. Close the tube and incubate for 10 minutes at room temperature.
4. Briefly vortex the tube and then do a quick spin (less than 5000xg) to concentrate the liquid at the bottom.
5. Store the suspended plasmid at -20°C. The DNA is stable for at least one year from date of shipping when stored at -20°C.

RefSeq: [BC025189](#), [AAH25189](#)

RefSeq Size: 2393 bp

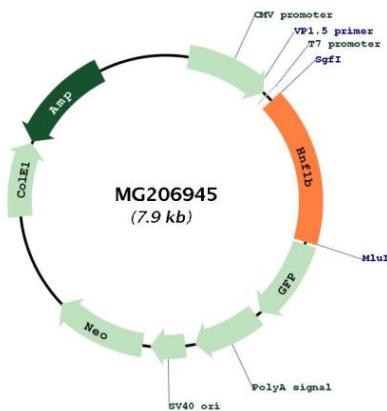
RefSeq ORF: 1307 bp

Locus ID: 21410

Cytogenetics: 11 51.23 cM

Gene Summary: Transcription factor, probably binds to the inverted palindrome 5'-GTTAATNATTAAC-3'.
[UniProtKB/Swiss-Prot Function]

Product images:



Circular map for MG206945