

## Product datasheet for **MG206916**

### Trnt1 (BC031764) Mouse Tagged ORF Clone

#### Product data:

Product Type:	Expression Plasmids
Product Name:	Trnt1 (BC031764) Mouse Tagged ORF Clone
Tag:	TurboGFP
Symbol:	Trnt1
Synonyms:	mt-Trat, CGI-47, 9830143O18Rik
Mammalian Cell Selection:	Neomycin
Vector:	pCMV6-AC-GFP (PS100010)
E. coli Selection:	Ampicillin (100 ug/mL)
ORF Nucleotide Sequence:	>MG206916 representing BC031764 Red=Cloning site Blue=ORF Green=Tags(s)

TTTTGTAATACGACTCACTATAGGGCGGCCGGAATTCGTCGACTGGATCCGGTACCGAGGAGATCTGCC  
GCC**CGATCGCC**

ATGCAGAGCGTCTGTATCCTTGGCACAGGCAGGTCTGAGGTGTAGTTGGAGTAGATTGTGCCTTCTGA  
AGCGATACCTGTTTACAATGAAGTTGCAGTCCCCAGAATTCAGTCCCTTTCCACGAAGGATTGAAGAG  
CCTGACAGAATTATTTGCCAAAGAGAATCATGAATTAAGAATAGCAGGAGGAGCAGTGAGGGATTTACTG  
AATGGGGTGAAGCCTCAAGATGTGGATTTCGCCACCACTGCCACCCTACTCAGATGAAGGAGATGTTCC  
AGTCAGCTGGCATTTCGCATGATCAACAACAAGGAGAGAAACATGGGACTATCACTGCCAGGCTTCATGA  
AGAAAATTTTGAAGTTACTACACTCCGAATTGATGTTACCACTGATGGAAGACATGCAGAGGTAGAATTC  
ACAACACTGACTGGCAGAAAGACGCTGAACGAAGAGATCTCACTATAAAATCTATGTTTCTAGGTTTTGATG  
GTACACTGTTTGATTACTTTAATGGTTATGCAGATTTAAAAATAAAAAGGTTTCGATTTGTTGGACATGC  
AAAACAGAGAATTCAGGAAGATTATCTTCGAATTTAAGGATTTTCAGGTTTTATGGCAGAATGTGCGAC  
AGACCTGGTGACCATGACCATGAGACTCTAGAAGCAATTCAGAAAAATGCCAAAGGTTGGCTGGAATAT  
CAGGAGAGAGGATTTGGGTAGAAGTGAAGAAAATCTTACTGGTGACCATGTAACCATTGATCCACCT  
GATCTATGATCTTGGTGTGGCTCCTCACATAGGTTTACCTGCTAATGCAAATTTAGAAGAATTTAACAAA  
GTCAGTAAAAATGTTGAAGCCTTTTCCAAAACCAATGACTCTTTTGGCTTCTTTATTTCAAAGTACAAG  
ATGATGTCACAAAATTGGACTTGAGATTGAAAATTTCAAAGAGGAGAAAAACCTGGGTTTATTTATAGT  
TAAAAACAGGAAAGACTTGATTAAGCAACAGATAGTTCAAGAACATTGAAACCATACCAAGACTTTGTG  
ATAGACTCTAGGGAACCAGATGCAACTGCCCGTGTGTTGTGAGCTGCTGAAGTACCAAGGAGAGCATGGTC  
TTCTCAAAGAGATGCAGCAGTGGTCTGTCCCGCTTCCCTGTGAGTGGACATGACATCAGGAAAGTGGG  
TATTTCTCAGGGAAGGAAATTTGGGGCCCTGCTACAGCAGTTGCGTGAACAGTGGAAAGAAAGTGGTTAC  
CGGATGGAAAAAGATGAACTACTAAGTTACATAAAGAAGACC

**ACGCGT**ACGCGGCCGCTCGAG - GFP Tag - GTTTAA



[View online >](#)

**Protein Sequence:** >MG206916 representing BC031764

Red=Cloning site Green=Tags(s)

```

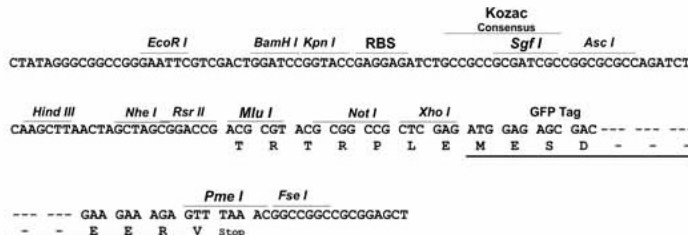
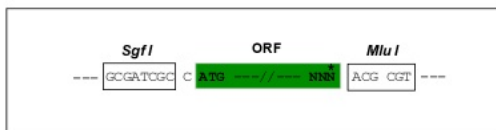
MQSVLYPWHRQVLRCSWSRLCLLKRYLFTMKLQSPFQSLFTEGLKSLTELFAKENHELRIAGGAVRDLL
NGVKPQDVDFATTATPTQMKEMFQSAGIRMINNKGEKHGTITARLHEENFEVTTLRIDVTTDGRHAEVEF
TTDWQKDAERRDLTINSMFLGFDGTLFDYFNGYADLKNKKVRFVGHAKQRIQEDYLRILRYFRFYGRIVD
RPGDHDHETLEAIAENAKGLAGISGERIWWELKKILTGDHVNHLIHLIYDLGVAPHIGLPANANLEEFNK
VSKNVEGFSPKPMTLASLFKVQDDVTKLDLRLKISKEEKNLGLFIVKNRKDLIKATDSSEPLKPYQDFV
IDSREPDATARVCELLKYQGEHLLKEMQQWSVPPFPVSGHDIRKVGISSKEIGALLQQLREQWKKSGY
RMEKDELLSYIKKT
    
```

TRTRPLE - GFP Tag - V

**Restriction Sites:** SgfI-MluI

**Cloning Scheme:**

Cloning sites used for ORF Shuttling:



**ACCN:** BC031764

**ORF Size:** 1304 bp

**OTI Disclaimer:** The molecular sequence of this clone aligns with the gene accession number as a point of reference only. However, individual transcript sequences of the same gene can differ through naturally occurring variations (e.g. polymorphisms), each with its own valid existence. This clone is substantially in agreement with the reference, but a complete review of all prevailing variants is recommended prior to use. [More info](#)

**OTI Annotation:** This clone was engineered to express the complete ORF with an expression tag. Expression varies depending on the nature of the gene.

**Components:** The ORF clone is ion-exchange column purified and shipped in a 2D barcoded Matrix tube containing 10ug of transfection-ready, dried plasmid DNA (reconstitute with 100 ul of water).

**Reconstitution Method:**

1. Centrifuge at 5,000xg for 5min.
2. Carefully open the tube and add 100ul of sterile water to dissolve the DNA.
3. Close the tube and incubate for 10 minutes at room temperature.
4. Briefly vortex the tube and then do a quick spin (less than 5000xg) to concentrate the liquid at the bottom.
5. Store the suspended plasmid at -20°C. The DNA is stable for at least one year from date of shipping when stored at -20°C.

**RefSeq:** [BC031764](#), [AAH31764](#)

**RefSeq Size:** 2240 bp

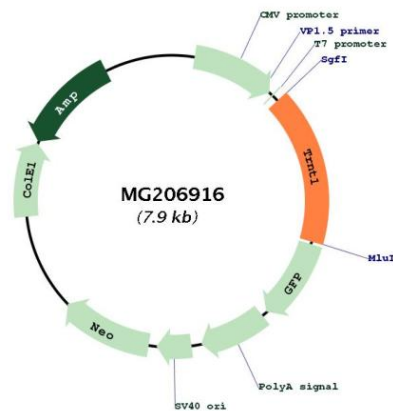
**RefSeq ORF:** 1304 bp

**Locus ID:** 70047

**Cytogenetics:** 6 E1

**Gene Summary:** Adds and repairs the conserved 3'-CCA sequence necessary for the attachment of amino acids to the 3' terminus of tRNA molecules, using CTP and ATP as substrates. [UniProtKB/Swiss-Prot Function]

### Product images:



Circular map for MG206916