

Product datasheet for **MG206823**

Flot1 (NM_008027) Mouse Tagged ORF Clone

Product data:

Product Type: Expression Plasmids
Product Name: Flot1 (NM_008027) Mouse Tagged ORF Clone
Tag: TurboGFP
Symbol: Flot1
Synonyms: reggie-2
Mammalian Cell Selection: Neomycin
Vector: pCMV6-AC-GFP (PS100010)
E. coli Selection: Ampicillin (100 ug/mL)
ORF Nucleotide Sequence: >MG206823 representing NM_008027
 Red=Cloning site Blue=ORF Green=Tags(s)

TTTTGTAATACGACTCACTATAGGGCGGCCGGAATTCGTCGACTGGATCCGGTACCGAGGAGATCTGCC
 GCC**CGATCGCC**

ATGTTTTTCACTTGTGGCCAAATGAGGCCATGGTGGTCTCCGGTTCTGCAGGAGCCCCCAGTCATGG
 TGGCCGGAGGCCGAGTGTGGTCTACCCTGCATTAGCAAAATCCAGAGGATCTCTCAACACACTGAC
 CCTCAATGTCAAGAGTAAAAGTTTATACCCGCCACGGGTCCCATCTCAGTCACGGGCATTGCCAG
 GTGAAAATCCAGGGCCAGAACAAGGAGATGCTGGCAGCTGCCTGCCAGATGTTCTGGGGAAGACAGAGG
 CGGAGATTGCCACATTGCCCTGGAGACTGGAAGGCCACCAGAGGGCAATCATGGCCACATGACTGT
 GGAGGAGATCTATAAGGATAGACAGAAATCTCAGAGCAGGTTTTCAAAGTGGCCCTCCGACCTGGTC
 AACATGGGTATCAGCGTGGTTAGCTACACTTTGAAGGATATTCATGATGACCAGGATTACTTACACTCGT
 TAGGAAAGGCTCGCACGGCACAAGTCCAAAAGATGCTCGGATTGGCGAAGCAGAGGCCAAGAGAGATGC
 CGGGATACGGGAGGCTAAGGCCAAGCAGGAGAAGGTATCTGCACAGTGCCTCAGTGAAAATAGAGATGGCC
 AAGGCACAGAGGGACTATGAGCTGAAGAAAGCCACCTACGACATCGAGGTCAACACCCGGCGAGCACAGG
 CTGACCTGGCCTATCAGCTGCAGGTGGCCAAGCAGAAGCAGCAGATCGAGGAGCAGCGGGTGCAGGTGCA
 GGTGGTTGAGCGCGCCAGCAGGTGGCAGTGCAGGAGCAGGAGATCGCCCGCGGAGAAGGAGTTGGAG
 GCTCGCGTGCAGCAAGCCAGCAGAGGCTGAGCGCTACAGGCTGGAGCGCCTGGCGGAAGCAGAGAAGGCC
 AGCTGATCATGCAGGCAGAAGCCGAAGCTGAGTCTGTGCGGATGCGAGGGGAAGCTGAGGCCTTTGCTAT
 AGGTGCCCGCGCTCGTGCTGAGGCTGAGCAAAATGGCCAAGAAGGCAGAAGCCTTCCAGATGTACCAGGAG
 GCCGCCAGCTGGACATGCTGCTGGAGAAACTGCCCCAGGTGGCAGAAGAGATCAGTGGTCCCCTGACCT
 CAGCCAATAAGATCACGCTGGTGTCTAGTGAAGCGGAACCATGGGGGCAGCCAAAGTTACTGGGAAGT
 ACTGGACATCTTGAGCCGCTGCCGGAGAGTGTGGAGAGGCTCACAGGCGTCAGCATCTCCAGGTAAT
 CACAACAAGCCTTTAAGGACAGCA

ACGCGTACGCGGCCGCTCGAG - GFP Tag - GTTTAA



[View online »](#)

Protein Sequence: >MG206823 representing NM_008027
 Red=Cloning site Green=Tags(s)

```

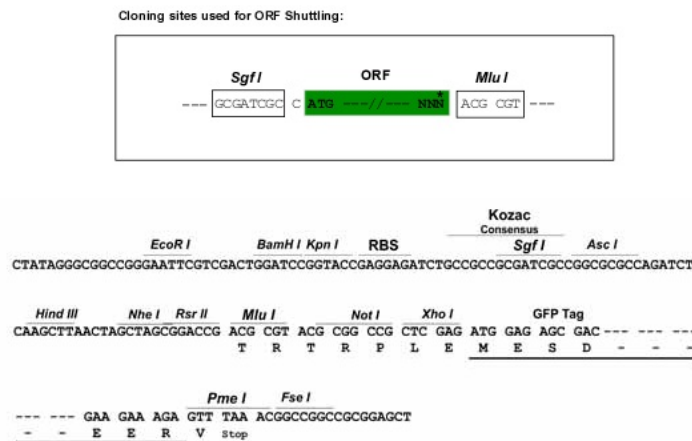
MFFTCTGPNAMVVSFGFCRSPVMVAGGRVFLPCIQQIQRISLNTLTLNVKSEKVYTRHGVPISVTGIAQ
VKIQGQNKEMLAACQMF LGKTEAEIAHIALETLEGHQRAIMAHMTVEE IYKDRQKFSEQVFKVASSDLV
NMGISVVSYTLKDIHDDQDYLHSLGKARTAQVQK DARI GEAEAKRDAGIREAKAKQEKVSAQCLSEIEMA
KAQRDYELKKATYDIEVNTRRRAQADLAYQLQVAKTKQIEEQRVQVQVVERAQVAVQEIEARREKELE
ARVRKPAEAERYRLERLAEAEKAQLIMQAEAEAE SVRMRGEAEAF AIGARARAEAEQMAKKA EAFQMYQE
AAQLDMLLEKLPQVAEEISGPLTSANKITLVSSGSGTMGAAKVTGEVLDILSRLPESVERLTGVSISQVN
HNKPLRTA
  
```

TRTRPLE - GFP Tag - V

Chromatograms: https://cdn.origene.com/chromatograms/ja2491_a03.zip

Restriction Sites: SgfI-MluI

Cloning Scheme:



ACCN: NM_008027

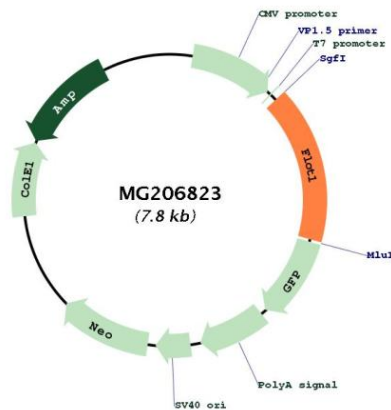
ORF Size: 1284 bp

OTI Disclaimer: Due to the inherent nature of this plasmid, standard methods to replicate additional amounts of DNA in E. coli are highly likely to result in mutations and/or rearrangements. Therefore, OriGene does not guarantee the capability to replicate this plasmid DNA. Additional amounts of DNA can be purchased from OriGene with batch-specific, full-sequence verification at a reduced cost. Please contact our customer care team at custsupport@origene.com or by calling 301.340.3188 option 3 for pricing and delivery.

The molecular sequence of this clone aligns with the gene accession number as a point of reference only. However, individual transcript sequences of the same gene can differ through naturally occurring variations (e.g. polymorphisms), each with its own valid existence. This clone is substantially in agreement with the reference, but a complete review of all prevailing variants is recommended prior to use. [More info](#)

OTI Annotation:	This clone was engineered to express the complete ORF with an expression tag. Expression varies depending on the nature of the gene.
Components:	The ORF clone is ion-exchange column purified and shipped in a 2D barcoded Matrix tube containing 10ug of transfection-ready, dried plasmid DNA (reconstitute with 100 ul of water).
Reconstitution Method:	<ol style="list-style-type: none">1. Centrifuge at 5,000xg for 5min.2. Carefully open the tube and add 100ul of sterile water to dissolve the DNA.3. Close the tube and incubate for 10 minutes at room temperature.4. Briefly vortex the tube and then do a quick spin (less than 5000xg) to concentrate the liquid at the bottom.5. Store the suspended plasmid at -20°C. The DNA is stable for at least one year from date of shipping when stored at -20°C.
RefSeq:	<u>NM_008027.1</u>
RefSeq Size:	1694 bp
RefSeq ORF:	1287 bp
Locus ID:	14251
UniProt ID:	<u>O08917</u>
Cytogenetics:	17 B1
Gene Summary:	May act as a scaffolding protein within caveolar membranes, functionally participating in formation of caveolae or caveolae-like vesicles.[UniProtKB/Swiss-Prot Function]

Product images:



Circular map for MG206823