

## Product datasheet for **MG206808**

### **Arl13b (NM\_026577) Mouse Tagged ORF Clone**

#### Product data:

Product Type:	Expression Plasmids
Product Name:	Arl13b (NM_026577) Mouse Tagged ORF Clone
Tag:	TurboGFP
Symbol:	Arl13b
Synonyms:	A530097K21Rik; A930014M17Rik; Arl2l1; C530009C10Rik; hnn
Mammalian Cell Selection:	Neomycin
Vector:	pCMV6-AC-GFP (PS100010)
E. coli Selection:	Ampicillin (100 ug/mL)
ORF Nucleotide Sequence:	>MG206808 representing NM_026577 Red=Cloning site Blue=ORF Green=Tags(s)

TTTTGTAATACGACTCACTATAGGGCGGCCGGAATTCGTCGACTGGATCCGGTACCGAGGAGATCTGCC  
GCC**CGATCGCC**

ATGTTTCAGTCTGATGGCCAACCTGCTGCAACTTGTTC AAGCGGTGGCGGGAGCCTGTCAGAAAGGTGACAC  
TTGTGATGGTCGGCCTTGATAATGCTGGTAAAACAGCCACAGCAAAGGGAATCCAAGGAGAGCATCTGA  
AGACGTAGCTCCCACTGTTGGCTTTTCTAAAATTGATCTGAGACAAGGAAAGTTCCAAGTTACCATCTTT  
GACTTAGGAGGTGAAAAAGAATTCGGGAATTTGGAAGAATTATTATGCTGAATCCTATGGGGTAATAT  
TTGTTGTGGATCCAGTGATGAGGAGAGAATGGAAGAAACAAAGGAGACAATGTCCGAAGTGCTAAGACA  
CCCAGGATATCAGGAAAGCCTATATTGGTGCTGGCCAACAAGCAAGACAAGGAGGGGGCTTAGGCGAA  
GCGGATGTGATTGAGTGTCTCTCGCTGGAGAAGCTGGTCAACGAGCACAAGTGCCTGTGTGATCGAAC  
CTTGTTGAGCAGTCTTGGGATATGGAAGAAAATTGACAAGTCCATTAAGGAGGGGCTTTATTGGCTACT  
GCATATCATTGCAAAGGACTTTGATGCCTTAAGTGAACGCATCCAGAAAGACACAACCTGAACAGCGAGCT  
CTTGAGGAACAAGAGAAACGTGAGAGGGCTGAACGAGTCCGGAAGTTAAGGGAAGAAAGAGAACGAGAGC  
AGACGGAACCTTGATGGGACCAGTGGTCTGGCTGAGATTGACTCAGGACCAGTCTTGC GAATCCTTTCCA  
ACCCATTGCAGCTGTAATCATTGAGAATGAAAAGAAGCAGGAAAAAGAGAAAAAGAACGACCCGTGGAG  
AAGGACAGTGATGTTGGTCTCCTAGAACATAAAGTGGAGCCAGCAAGCAGCGCCTCAGAGTGAGGCAG  
ATTGCTGCCTCCAAAACCTGACGAGCGAGTGGTGGACAGTTACAGGGAGGCACTGTCGACGAGCTGGA  
CAGTGAGGATGAGCAGGACCAGCGAGGGTCAGAGTCCGGGAAAAACAGTAAAGAAGAAAACCAAGAACTA  
AGAATGAAAAGGAGTCAGCGGTAGAACCAGTCAATACAGACGAGTCTACTCCAAGAGTCCCACGCCTC  
CCCAACCTCCCCCTCCTGTTGGCTGGGAAACCCCAAAGTCACTAGACTTCCAAAACCTTGAGCCTCTTG  
TGAAACACGTACAATGATTTCTATGGGAAGCCGCTGCCTCCCCTGGCTGTGCGACAGAGACCTAACGGT  
GATGCTCAGGACACGATCTCA

**ACGCGT**ACGCGGCCGCTCGAG - GFP Tag - GTTTAA



[View online »](#)

**Protein Sequence:** >MG206808 representing NM\_026577  
 Red=Cloning site Green=Tags(s)

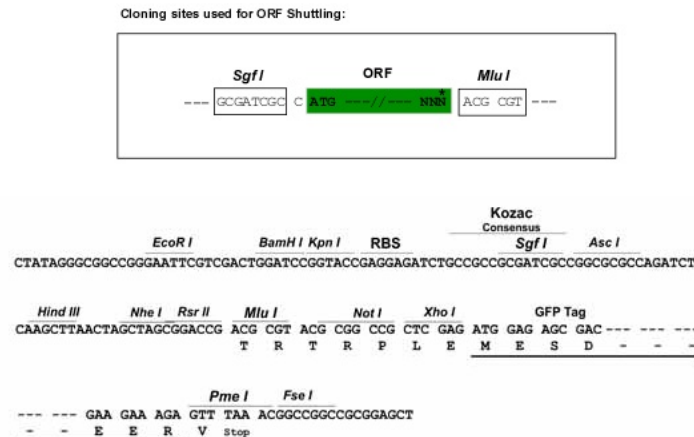
MFSLMANCCNLFKRWREPVRKVTLMVGLDNAGKTATAKGIQGEHPEDVAPTGVGFSKIDLRQGKFQVTIF  
 DLGGGKRIRGIWKNYYAESYGVIFVVDSSDEERMEETKETMSEVLRHPRISGKPIVLANKQDKEGALGE  
 ADVIECLSLEKL VNEHKCLCQIEPCSAVLGYGKKIDKSIKKGLYLLHIIAKDFDALSERIQKDTTEQRA  
 LEEQEKRERAERVRLREEREREQTELDGTSGLAEIDSGPVLANPFQPIAAVI IENEKKQEKEKKKQTV  
 KSDSDVGLLEHKVEPEQAAPQSEADCCCLQNPDERVVDSYREALSQQLDSEDEQDQRGSESGENSKKKTKKL  
 RMKRSQRVEPVNTDESTPKSPTPPQPPPPVGGWTPKVTRLPKLEPLGETRHNDFYGKPLPPLAVRQRPNG  
 DAQDTIS

TRTRPLE - GFP Tag - V

**Restriction Sites:**

SgfI-MluI

**Cloning Scheme:**



**ACCN:** NM\_026577

**ORF Size:** 1281 bp

**OTI Disclaimer:** The molecular sequence of this clone aligns with the gene accession number as a point of reference only. However, individual transcript sequences of the same gene can differ through naturally occurring variations (e.g. polymorphisms), each with its own valid existence. This clone is substantially in agreement with the reference, but a complete review of all prevailing variants is recommended prior to use. [More info](#)

**OTI Annotation:** This clone was engineered to express the complete ORF with an expression tag. Expression varies depending on the nature of the gene.

**Components:** The ORF clone is ion-exchange column purified and shipped in a 2D barcoded Matrix tube containing 10ug of transfection-ready, dried plasmid DNA (reconstitute with 100 ul of water).

**Reconstitution Method:**

1. Centrifuge at 5,000xg for 5min.
2. Carefully open the tube and add 100ul of sterile water to dissolve the DNA.
3. Close the tube and incubate for 10 minutes at room temperature.
4. Briefly vortex the tube and then do a quick spin (less than 5000xg) to concentrate the liquid at the bottom.
5. Store the suspended plasmid at -20°C. The DNA is stable for at least one year from date of shipping when stored at -20°C.

**Note:** Plasmids are not sterile. For experiments where strict sterility is required, filtration with 0.22um filter is required.

**RefSeq:** [NM\\_026577.2](#), [NP\\_080853.2](#)

**RefSeq Size:** 3541 bp

**RefSeq ORF:** 1284 bp

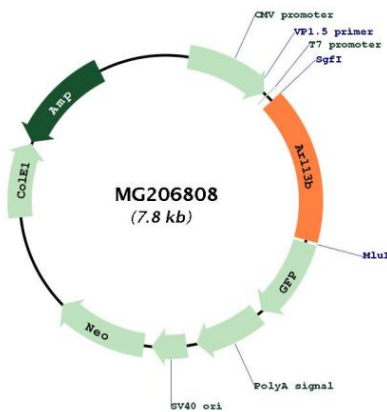
**Locus ID:** 68146

**UniProt ID:** [Q640N2](#)

**Cytogenetics:** 16 C1.3

**Gene Summary:** Cilium-specific protein required to control the microtubule-based, ciliary axoneme structure. May act by maintaining the association between IFT subcomplexes A and B. Binds GTP but is not able to hydrolyze it; the GTPase activity remains unclear. Required to pattern the neural tube. Involved in cerebral cortex development: required for the initial formation of a polarized radial glial scaffold, the first step in the construction of the cerebral cortex, by regulating ciliary signaling (PubMed:23817546). Regulates the migration and placement of postmitotic interneurons in the developing cerebral cortex (PubMed:23153492). [UniProtKB/Swiss-Prot Function]

**Product images:**



Circular map for MG206808