

Product datasheet for **MG206789**

Mfge8 (NM_001045489) Mouse Tagged ORF Clone

Product data:

Product Type:	Expression Plasmids
Product Name:	Mfge8 (NM_001045489) Mouse Tagged ORF Clone
Tag:	TurboGFP
Symbol:	Mfge8
Synonyms:	AA408458; AI325141; lactadherin; MFG-E8; Mfgm; MP47; P47; SED1
Mammalian Cell Selection:	Neomycin
Vector:	pCMV6-AC-GFP (PS100010)
E. coli Selection:	Ampicillin (100 ug/mL)
ORF Nucleotide Sequence:	>MG206789 representing NM_001045489 Red=Cloning site Blue=ORF Green=Tags(s)

TTTTGTAATACGACTCACTATAGGGCGGCCGGAATTCGTCGACTGGATCCGGTACCGAGGAGATCTGCC
GCC**CGATCGCC**

ATGCAAGTCTCCCGTGTGCTGGCCGCGCTGTGCGGCATGCTACTCTGCGCCTCTGGCCTCTTCGCCGCT
CTGGTGACTTCTGTGACTCCAGCCTGTGCCTGAACGGTGGCACCTGCTTGACGGGCCAAGACAATGACAT
CTACTGCCTCTGCCCTGAAGGCTTCACAGGCCTTGTGTGCAATGAGACTGAGAGAGGACCATGCTCCCCA
AACCCCTTGCTACAATGATGCCAAATGTCTGGTGACTTTGGACACACAGCGTGGGGACATCTTCACCGAAT
ACATCTGCCAGTCCCTGTGGGCTACTCGGCATCCACTGTGAAACCGGTTGTTCTACACAGCTGGGCAT
GGAAGGGGGCGCCATTGCTGATTCACAGATTTCCGCCTCGTCTGTGTATATGGGTTTCATGGGCTTGCGAG
CGCTGGGGCCCGGAGCTGGCTCGTCTGTACCGCACAGGGATCGTCAATGCCTGGACAGCCAGCAACTATG
ATAGCAAGCCCTGGATCCAGGTGAACCTTCTGCGGAAGATGCGGGTATCAGGTGTGATGACGCAGGGTGC
CAGCCGTGCCGGGAGGGCGGAGTACCTGAAGACCTTCAAGGTGGCTTACAGCCTCGACGGACGCAAGTTT
GAGTTCATCCAGGATGAAAGCGGTGGAGACAAGGAGTTTTTGGGTAACCTGGACAACAACAGCCTGAAGG
TTAACATGTTCAACCCGACTCTGGAGGCACAGTACATAAGGCTGTACCCTGTTTCGTGCCACCGCGGCTG
CACCCCTCCGCTTCGAGCTCCTGGGCTGTGAGTTGCACGGATGTTCTGAGCCCTGGGCTGAAGAATAAC
ACAATCTTGACAGCCAGATGTCAAGCCTCCAGCAGCTACAAGACATGGAACCTGCGTGCTTTGGCTGGT
ACCCCACTTGGGAAGGCTGGATAATCAGGGCAAGATCAATGCCTGGACGGCTCAGAGCAACAGTGCCAA
GGAATGGCTGCAGTTGACCTGGGCACTCAGAGGCAAGTGACAGGAATCATCACCAGGGGGCCCGTGAC
TTTGGCCACATCCAGTATGTGGCGTCTACAAGGTAGCCACAGTGATGATGGTGTGCGAGTGGACTGTAT
ATGAGGAGCAAGGAAGCAGCAAGGTCTTCCAGGGCAACTTGGACAACAACCTCCACAAGAAGAACATCTT
CGAGAAACCCCTCATGGCTCGTACGTGCGTGTCTTCCAGTGTCTTGGCATAACCGCATCACCTCGCGC
CTGGAGCTGTGGCTGT

ACGCGTACGCGGCCGCTCGAG - GFP Tag - GTTTAA



[View online »](#)

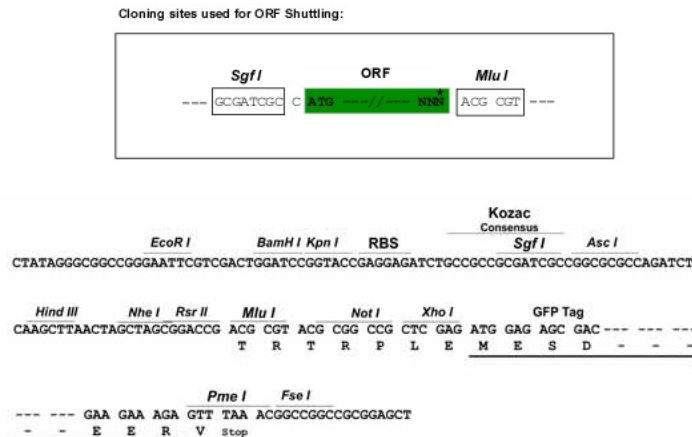
Protein Sequence: >MG206789 representing NM_001045489
 Red=Cloning site Green=Tags(s)

MQVSRVLAALCGMLL CASGLFAASGDFCDSSLCLNGGTCLTGQDNDIYCLCEGFTGLVCNETERGPCSP
 NPCYNDACLVTLDTRGDIFTEYICQCPVGYSGIHCETGCSTQLGMEGGAIADSQISASSVYMGFMGLQ
 RWGPELARLYRTGIVNAWTASNYSKWPVIQVNLRLKMRVSGVMTQGASRAGRAEYLKTFKVAYS LDGRKF
 EF IQDESGGDKFLGNLDNNSLKVNMFNPTLEAQYIRL YPVSCHRGCTLRFELLGCELHGCSEPLGLKNN
 TIPDSQMSASSYKTNLRAFGWYPHLGRLDNQKINAWTAQSN SAKEWLQVDLGTQRQVTGIITQGARD
 FGH IQYVASYKVAHSDDGVQWTVYEEQGS SKVFQGNLDNNSHKKNIFEKPFMARYRVLVPSWHNRITLR
 LELLGC

TRTRPLE – GFP Tag – V

Restriction Sites: SgfI-MluI

Cloning Scheme:



ACCN: NM_001045489

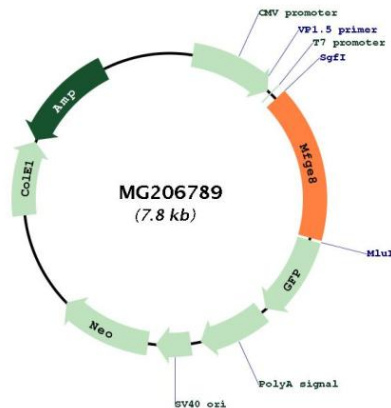
ORF Size: 1278 bp

OTI Disclaimer: Due to the inherent nature of this plasmid, standard methods to replicate additional amounts of DNA in E. coli are highly likely to result in mutations and/or rearrangements. Therefore, OriGene does not guarantee the capability to replicate this plasmid DNA. Additional amounts of DNA can be purchased from OriGene with batch-specific, full-sequence verification at a reduced cost. Please contact our customer care team at custsupport@origene.com or by calling 301.340.3188 option 3 for pricing and delivery.

The molecular sequence of this clone aligns with the gene accession number as a point of reference only. However, individual transcript sequences of the same gene can differ through naturally occurring variations (e.g. polymorphisms), each with its own valid existence. This clone is substantially in agreement with the reference, but a complete review of all prevailing variants is recommended prior to use. [More info](#)

OTI Annotation:	This clone was engineered to express the complete ORF with an expression tag. Expression varies depending on the nature of the gene.
Components:	The ORF clone is ion-exchange column purified and shipped in a 2D barcoded Matrix tube containing 10ug of transfection-ready, dried plasmid DNA (reconstitute with 100 ul of water).
Reconstitution Method:	<ol style="list-style-type: none"> 1. Centrifuge at 5,000xg for 5min. 2. Carefully open the tube and add 100ul of sterile water to dissolve the DNA. 3. Close the tube and incubate for 10 minutes at room temperature. 4. Briefly vortex the tube and then do a quick spin (less than 5000xg) to concentrate the liquid at the bottom. 5. Store the suspended plasmid at -20°C. The DNA is stable for at least one year from date of shipping when stored at -20°C.
RefSeq:	<u>NM_001045489.1, NP_001038954.1</u>
RefSeq Size:	2032 bp
RefSeq ORF:	1281 bp
Locus ID:	17304
Cytogenetics:	7 44.9 cM
Gene Summary:	Contributes to phagocytic removal of apoptotic cells in many tissues. Specific ligand for the alpha-v/beta-3 and alpha-v/beta-5 receptors. Also binds to phosphatidylserine-enriched cell surfaces in a receptor-independent manner. Zona pellucida-binding protein which may play a role in gamete interaction (By similarity). Plays an important role in the maintenance of intestinal epithelial homeostasis and the promotion of mucosal healing. Promotes VEGF-dependent neovascularization.[UniProtKB/Swiss-Prot Function]

Product images:



Circular map for MG206789