

Product datasheet for **MG206777**

Kcnn4 (NM_008433) Mouse Tagged ORF Clone

Product data:

Product Type: Expression Plasmids
Product Name: Kcnn4 (NM_008433) Mouse Tagged ORF Clone
Tag: TurboGFP
Symbol: Kcnn4
Synonyms: IK1; IKCA1; KCa3.1; KCA4; mIKCa1; SK4; SKCas
Mammalian Cell Selection: Neomycin
Vector: pCMV6-AC-GFP (PS100010)
E. coli Selection: Ampicillin (100 ug/mL)
ORF Nucleotide Sequence: >MG206777 representing NM_008433
 Red=Cloning site Blue=ORF Green=Tags(s)

TTTTGTAATACGACTCACTATAGGGCGGCCGGAATTCGTCGACTGGATCCGGTACCGAGGAGATCTGCC
 GCC**CGATCGCC**

ATGGGCGGGGAGCTGGTACTGGCTGGGGCCCTGAGACGGAGAAAGCGCCTGCTGGAGCAGGAGAAGA
 GGGTGGCCGGCTGGGCGTTGGTGTGGCGGAACTGGCATCGGACTCATGGTTCTGCACGCTGAGATGTT
 GTGGTTCTGGGCTGCAAGTGGGTGCTGTACCTGCTCCTGGTTAAGTGTTTGATCACCTGTCCACTGCC
 TTCTCTTTGTCTTATTGTGGTCTTCCATGCCAAGGAGGTCCAGCTGTTGATGACTGACAACGGGCTCC
 GGGACTGGCGCTGGCGCTGACCCGGCGCAGGTGGCGCAGATCCTGCTGGAGCTGTTGGTGTGCGGGT
 GCACCCGGTGCCTACGGAGCCCGCACTGCGCCCTGGCGGGGAGGCCACCGACGCGCAGCCCTGGCCG
 GGTTTCTGGGCGAAGGCGAGGCGTTGCTGTCCTGGCCATGCTCCTGCGTCTCTACCTGGTGCCTCCGCG
 CGGTGCTGCTGCGCAGCGGGTCTGCTCAACGCGTCTACCGCAGCATCGGGGCGCTCAACCAAGTCCG
 CTTCCGCCACTGGTTCGTGGCCAAGCTGTACATGAACACGCAACCCGGTGCCTGCTGCTGGCCTCACG
 CTGGGTCTCTGGCTCACACAGCTTGGGTGCTGTCTGTGGCTGAGAGGCAAGGCTGTCAATGCCACGGGC
 ACCTCACAGACACTGTGGCTGATTCCGATCACATTCCTGACCATGGCTATGGGGACGTGGTACCTGG
 CACCATGTGGGCAAGATTGTCTGCCTGTGCACCGGAGTCATGGGGTCTGCTGCACAGCTCTCCTGGT
 GCTGTGGTGGCTCGAAGCTGGAGTTCAACAAGCGGAGAAACAGTGCACAATTCATGATGGACATCC
 ATTATGCCAAAGAGATGAAGGAGTCAGCGCGCGGCTGCTGCAGGAAGCCTGGATGTAACAAGCACAC
 TCGAAGGAAGGACTCCCGGGCTGCCCGCAGACATCAGCGCAAGATGCTGGCCGCCATCCACACGTTCCGC
 CAGGTACGGCTGAAACACCGGAAGCTCCGGGAACAAGTGAATTCCATGGTGGACATCTCCAAGATGCACA
 TGATCCTGTGCGACCTGCAGCTGGGTCTCAGCTCCTCGCACCGTGCCTGGAGAAGAGAATCGACGGTCT
 GGCAGGAAAGCTGGATGCCCTGACAGAGCTGCTCGGCACTGCCCTGCAGCAACAGCAGCTACCAGAACCC
 AGCCAGGAGGCCACA

AGCGGACCGACGCGTACGCGGCCGCTCGAG - GFP Tag - GTTTAA



[View online »](#)

Protein Sequence: >MG206777 representing NM_008433
 Red=Cloning site Green=Tags(s)

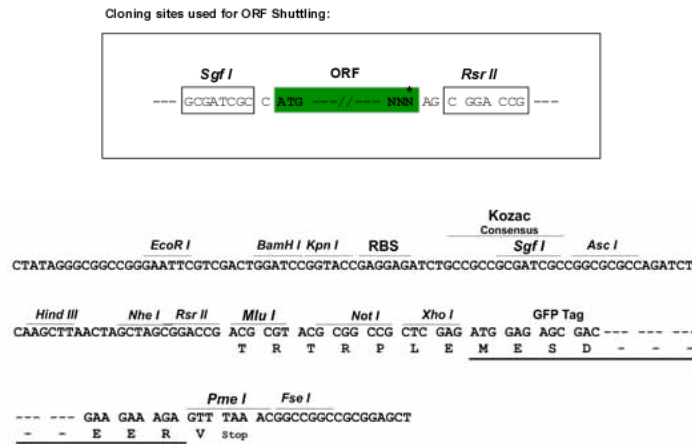
MGGELVTGLGALRRRKRLLEQEKRVAAGWALVLAGTGIGLMVLHAEMLWFLGCKWVLYLLLKCLITLSTA
 FLLCLIVVFHAKEVQLFMTDNGLRDWRVALTRRQVAQILLELLVCGVHPVPLRSPHCALAGEATDAQPPW
 GFLGEGEALLSLAMLLRLLYLVPRAVLLRSGVLLNASYRSIGALNQVRFHWFVAKLYMNTHPGRLLGLT
 LGLWLTAWVLSVAERQAVNATGHLDTLWLIPIITFLTIGYGDVVPGTMWGKIVCLCTGVMGVCCTALLV
 AVVARKLEFNKAIEKHVHNFMMDDIHYAKEMKESAARLLQEAWMYKHTRRKDSRAARRHQKMLAAIHTFR
 QVRLKHKRLREQVNSMVDISKMMHILCDLQLGLSSSHRALEKRIDGLAGKLDALTELLGTALQQQLPEP
 SQEAT

SGPTRRRLE - GFP Tag - V

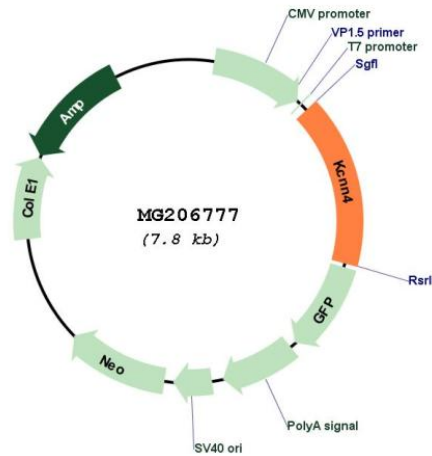
Restriction Sites:

SgfI-RsrII

Cloning Scheme:



Plasmid Map:



ACCN:

NM_008433

ORF Size:	1275 bp
OTI Disclaimer:	The molecular sequence of this clone aligns with the gene accession number as a point of reference only. However, individual transcript sequences of the same gene can differ through naturally occurring variations (e.g. polymorphisms), each with its own valid existence. This clone is substantially in agreement with the reference, but a complete review of all prevailing variants is recommended prior to use. More info
OTI Annotation:	This clone was engineered to express the complete ORF with an expression tag. Expression varies depending on the nature of the gene.
Components:	The ORF clone is ion-exchange column purified and shipped in a 2D barcoded Matrix tube containing 10ug of transfection-ready, dried plasmid DNA (reconstitute with 100 ul of water).
Reconstitution Method:	<ol style="list-style-type: none">1. Centrifuge at 5,000xg for 5min.2. Carefully open the tube and add 100ul of sterile water to dissolve the DNA.3. Close the tube and incubate for 10 minutes at room temperature.4. Briefly vortex the tube and then do a quick spin (less than 5000xg) to concentrate the liquid at the bottom.5. Store the suspended plasmid at -20°C. The DNA is stable for at least one year from date of shipping when stored at -20°C.
RefSeq:	NM_008433.2 , NP_032459.2
RefSeq Size:	1951 bp
RefSeq ORF:	1278 bp
Locus ID:	16534
UniProt ID:	O89109
Cytogenetics:	7 A3
Gene Summary:	Forms a voltage-independent potassium channel that is activated by intracellular calcium (PubMed:9705284). Activation is followed by membrane hyperpolarization which promotes calcium influx. Required for maximal calcium influx and proliferation during the reactivation of naive T-cells (PubMed:20884616). Plays a role in the late stages of EGF-induced macropinocytosis (By similarity).[UniProtKB/Swiss-Prot Function]