

Product datasheet for **MG206765**

Sf3b4 (NM_153053) Mouse Tagged ORF Clone

Product data:

Product Type:	Expression Plasmids
Product Name:	Sf3b4 (NM_153053) Mouse Tagged ORF Clone
Tag:	TurboGFP
Symbol:	Sf3b4
Synonyms:	49kD; Sa; Sap49; SF3b49; SF3b50
Mammalian Cell Selection:	Neomycin
Vector:	pCMV6-AC-GFP (PS100010)
E. coli Selection:	Ampicillin (100 ug/mL)
ORF Nucleotide Sequence:	>MG206765 representing NM_153053 Red=Cloning site Blue=ORF Green=Tags(s)

TTTTGTAATACGACTCACTATAGGGCGGCCGGAATTCGTCGACTGGATCCGGTACCGAGGAGATCTGCC
GCC**CGATCGCC**

ATGGCTGCCGGACCGATCTCCGAACGGAATCAGGATGCCACGGTGTACGTGGGCGGTCTGGACGAGAAAAG
TGAGTGAGCCGCTGCTGTGGGAGCTCTTCTCCAGGCAGGGCCAGTGGTCAACACCCACATGCCAAAGGA
CAGAGTCACTGGCCAGCACCAGGCTATGGCTTTGTTGAATTCCTGAGCGAGGAAGATGCCGACTATGCC
ATTAAGATTATGAACATGATCAAACCTATGAAAAGCCAATACGGGTGAACAAGGCCTCAGCTCACAAACA
AAAACCTGGATGTGGGAGCCAACATTTTCATTGGAAATCTGGACCCAGAAATGATGAAAAGCTGCTTTA
CGATACTTTCAGCGCCTTTGGAGTCATCCTACAGACCCCAAGATCATGCGGGACCTGACACAGGCAAC
TCCAAGGGTTACGCCTTCATTAATTTTGCCTCCTTCGATGCTTCGGATGCAGCAATTGAGGCCATGAACG
GGCAGTACCTGTGTAACCGTCTATCACTGTGTCTTATGCCTTCAAGAAGGACTCTAAGGGTGAACGCCA
TGGCTCAGCAGCTGAAAGACTCCTGGCAGCCCAGAACCCGCTGTCCCAGGCTGACCGCCCTCACCAGCTG
TTTGCCGATGCACCCCTCCGCCCTCTGCCCAATCCCGTGGTTTCATCCCTGGGTTCTGGGCTTCTCT
CACCAGGCATGCCGCCTCCTGGCTCTTTCCACCTCCAGTGCCACCTCCTGGGGCCCTCCCTCCTGGGAT
TCCCCAGCCATGCCCCACCACCTATGCCACCTGGGGCTGGAGGACATGGCCCCCAGCAGCAGGGACT
CCAGGGGCTGGACATCCCGGTACGGACACTCACATCCTCACCGTTCACCAGGTGGGATGCCCATC
CAGGGATGTCCCAGATGCAGCTGGCCCACCATGGCCCCATGGCCTAGGACACCCCATGCTGGGCCTCC
GGGCTCTGGGGGCGAGCCACCACCTCGGCCACCTCCTGGAATGCCTCATCCTGGACCTCCTCCAATGGGC
ATGCCCCCCGAGGGCCTCCTTTTGGATCTCCCATGGGTACCCAGGTCCCATGCCTCCACACGGCATGC
GTGGGCCTCCTCATTGATGCCCCCTCATGGATACACGGGTCTCCAAGACCCCTCCTATGGCTACCA
GCGGGGGCCCTCCGCCACCCAGACCCACTCCACGGCCCCAGTTCACCTCGTGGTCTCTTCGGGGC
CCACTTCTCAG

ACGCGTACGCGGCCGCTCGAG - GFP Tag - GTTTAA



[View online »](#)

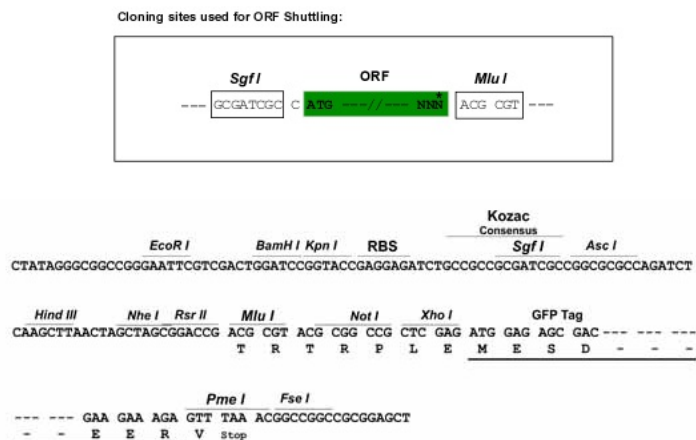
Protein Sequence: >MG206765 representing NM_153053
Red=Cloning site Green=Tags(s)

MAAGPISERNQDATVYVGGLEKDVSEPLLWELFLQAGPVVNTHMPKDRVTGQHQGYGFVEFLSEEDADYA
 IKIMNMIKLYGKPIRVNKASAHNKNLDVGANIFIGNLDPEIDEKLLYDTFSAFGVILQTPKIMRDPDTGN
 SKGYAFINFASFDASDAAEAMNGOYL CNRPITVSYAFKKDSKGERHGSAAERLLAAQNPLSQADRPQL
 FADAPPPPSAPNPVVSSLGSLPPPGMPPPGSFPPPVPPPGALPPGIPPAMPPPPMPGGAGHGPPAAGT
 PGAGHPGHGSHPHFPFPGGMPHPGMSQMLAHHGPHGLGHPHAGPPSGGQPPRPPPGMPHPGPPPMG
 MPPRGPFFGSPMGHPGMPHPGMRGPPPLMPPHGYTGPPRPPPYGYQRGLPPPRPTPRPPVPRGRLRG
 PLPQ

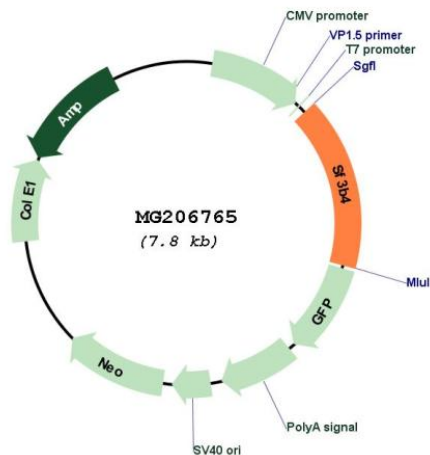
TRTRPLE - GFP Tag - V

Restriction Sites: SgfI-MluI

Cloning Scheme:



Plasmid Map:



ACCN: NM_153053

ORF Size:	1272 bp
OTI Disclaimer:	The molecular sequence of this clone aligns with the gene accession number as a point of reference only. However, individual transcript sequences of the same gene can differ through naturally occurring variations (e.g. polymorphisms), each with its own valid existence. This clone is substantially in agreement with the reference, but a complete review of all prevailing variants is recommended prior to use. More info
OTI Annotation:	This clone was engineered to express the complete ORF with an expression tag. Expression varies depending on the nature of the gene.
Components:	The ORF clone is ion-exchange column purified and shipped in a 2D barcoded Matrix tube containing 10ug of transfection-ready, dried plasmid DNA (reconstitute with 100 ul of water).
Reconstitution Method:	<ol style="list-style-type: none">1. Centrifuge at 5,000xg for 5min.2. Carefully open the tube and add 100ul of sterile water to dissolve the DNA.3. Close the tube and incubate for 10 minutes at room temperature.4. Briefly vortex the tube and then do a quick spin (less than 5000xg) to concentrate the liquid at the bottom.5. Store the suspended plasmid at -20°C. The DNA is stable for at least one year from date of shipping when stored at -20°C.
RefSeq:	NM_153053.4 , NP_694693.1
RefSeq Size:	1697 bp
RefSeq ORF:	1275 bp
Locus ID:	107701
UniProt ID:	Q8QZY9
Cytogenetics:	3 F2.1
Gene Summary:	This gene encodes one of the subunits of splicing factor 3B. A similar gene in human encodes a protein that cross-links to a region in the pre-mRNA immediately upstream of the branchpoint sequence in pre-mRNA in the prespliceosomal complex A. It also may be involved in the assembly of the B, C and E spliceosomal complexes, and also belongs with the minor U12-dependent spliceosome. [provided by RefSeq, May 2015]