

Product datasheet for **MG206762**

Pacsin3 (NM_030880) Mouse Tagged ORF Clone

Product data:

Product Type:	Expression Plasmids
Product Name:	Pacsin3 (NM_030880) Mouse Tagged ORF Clone
Tag:	TurboGFP
Symbol:	Pacsin3
Synonyms:	4921507A02Rik; 6330413E15Rik; AW413130
Mammalian Cell Selection:	Neomycin
Vector:	pCMV6-AC-GFP (PS100010)
E. coli Selection:	Ampicillin (100 ug/mL)
ORF Nucleotide Sequence:	>MG206762 representing NM_030880 Red=Cloning site Blue=ORF Green=Tags(s)

TTTTGTAATACGACTCACTATAGGGCGGCCGGAATTCGTCGACTGGATCCGGTACCGAGGAGATCTGCC
GCC**CGATCGCC**

ATGGCTCCAGAGGAGGACGCCGGAGGGGAGGTCTAGGGGGCAGTTTCTGGGAGGCTGGCAACTACAGAC
GGACGGTGCAGAGGGTTGAGGATGGGCACAGGCTGTGTGGGGACCTGGTTAGCTGCTTCCAAGAACGTGC
CCGATTGAGAAGGCCTACGCCACGAGCTGGCTGACTGGGCCGCAAGTGGAGGGGTGCTGTGGAGAAG
GGCCACAGTACGGCACCCTGGAGAAGGCCTGGCATGCCTTCTTACTGCGGCTGAGAGGCTGAGCGAGC
TGCACTTGAGGTTGAGGGAGAAGTTGCACGGTCCAGACAGCGAGCGAGTGGCAGCTGGCAGCGAGGGGC
TTTCCACCGGCCAGTGTGGGGGGCTTTTCGGGAAAGCCGGGCTGCAGAGGATGGTTTCCGTAAAGCTCAG
AAGCCCTGGCTAAAGAGGCTGAAGGAGGTTGAGGCTTCTAAGAAGAGCTACCACACAGCCCGCAAGGATG
AGAAGACAGCCCAGACCCGGGAGAGCCACGCGAAGGCAGACAGCTCCATGTCCCAGGAGCAGCTTCGAAA
ATTACAGGAGCGGGTGGGCCGCTGCACCAAGGAGGCAGAGAAGATGAAAACCCAGTATGAGCAGACCCTG
GCCGAGCTAAATCGCTACACCCACGCTACATGGAGGACATGGAGCAGGCTTTTGAGAGCTGCCAGGCTG
CTGAGCGCCAGCGGCTTCTTCTTCAAGGATGTCTTGCTCACCCTGCATCAACACCTCGACCTCTCCAG
TAGCGACAAGTTCCATGAACTCCATCGAGACCTGCAGCAGAGCATTGAGGCTGCCAGTTTGAGGAATGGTCG
CTGCGCTGGTGGCGGAGCACACACGGGCTGGCATGGCCATGAACTGGCCACAGTTTGAGGAATGGTCG
TAGACACACAGAGAGCCATCAGCCGCAAGGAGAAGGGTGGCCGGAGCCAGATGAGGTTACTCTGACCAG
CATTGTACCGACAAGAGATGGCACCCGACCCCCACCCAGTCCCCATCGTCCCCGGGTAGCGGGCAGGAC
GAGGACTGGTCAGATGAGGAGAGTCCCCGAAAGTTGCCACTGGGGTGGGGTACGGGCGCTTTATGACT
ATGCTGGCCAGGAGGCTGATGAGCTGAGCTTCCGAGCAGGGGAAGAGTTGCTGAAGATGAGCGAGGAGGA
TGAGCAGGGCTGGTGCCAGGGCCAGCTGCAGAGTGGCCGATTGGTCTGTACCCTGCCAATTACGTAGAA
TGTGTGGGCGCC

ACGCGTACGCGGCCGCTCGAG - GFP Tag - GTTTAA



[View online >](#)

Protein Sequence: >MG206762 representing NM_030880
 Red=Cloning site Green=Tags(s)

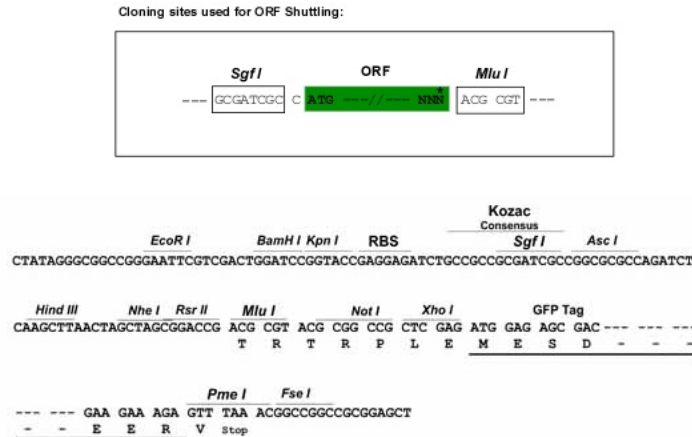
MAPEEDAGGEVLGGSFWEAGNYRRTVQRVEDGHRLCGDLVSCFQERARIEKAYAQQQLADWARKWRGAVEK
 GPQYGTLEKAWHAFFTAERLSELHLEVREKLHGPDSERVRTWQRGAFHRPVLGGFRESRAAEDGFRKAQ
 KPWLKRLKEVEASKKSYHTARKDEKTAQTRESHAKADSSMSQEQLRKLQERVGRCTKEAEKMKTQYEQTL
 AELNRYTPRYMEDMEQAFESCQAAERQRLFFKDVLLTLHQHLDLSSSDKFHELHRDLQQSIEAASDEED
 LRWWRSTHGPGMAMNWPQFEWSLDTQRAISRKEKGGSPDEVTLTSIVPTRDGTAPPPQSPSSPGSGQD
 EDWSDEESPRKVATGVRVRALYDYAGQEADEL SFRAGEELLKMSEEDEQGCQGLQSGRIGLYPANYVE
 CVGA

TRTRPLE - GFP Tag - V

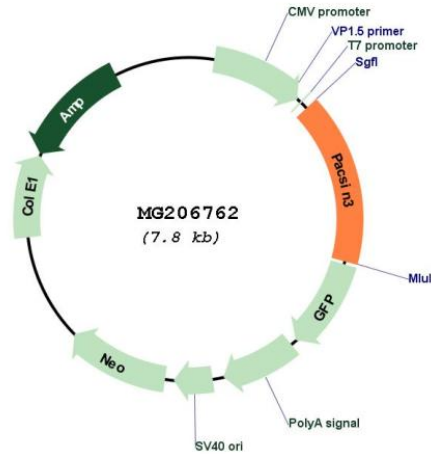
Restriction Sites:

SgfI-MluI

Cloning Scheme:



Plasmid Map:



ACCN:

NM_030880

ORF Size:	1857 bp
OTI Disclaimer:	The molecular sequence of this clone aligns with the gene accession number as a point of reference only. However, individual transcript sequences of the same gene can differ through naturally occurring variations (e.g. polymorphisms), each with its own valid existence. This clone is substantially in agreement with the reference, but a complete review of all prevailing variants is recommended prior to use. More info
OTI Annotation:	This clone was engineered to express the complete ORF with an expression tag. Expression varies depending on the nature of the gene.
Components:	The ORF clone is ion-exchange column purified and shipped in a 2D barcoded Matrix tube containing 10ug of transfection-ready, dried plasmid DNA (reconstitute with 100 ul of water).
Reconstitution Method:	<ol style="list-style-type: none">1. Centrifuge at 5,000xg for 5min.2. Carefully open the tube and add 100ul of sterile water to dissolve the DNA.3. Close the tube and incubate for 10 minutes at room temperature.4. Briefly vortex the tube and then do a quick spin (less than 5000xg) to concentrate the liquid at the bottom.5. Store the suspended plasmid at -20°C. The DNA is stable for at least one year from date of shipping when stored at -20°C.
RefSeq:	NM_030880.3
RefSeq Size:	1767 bp
RefSeq ORF:	1275 bp
Locus ID:	80708
UniProt ID:	Q99JB8
Cytogenetics:	2 E1
Gene Summary:	Plays a role in endocytosis and regulates internalization of plasma membrane proteins. Overexpression impairs internalization of SLC2A1/GLUT1 and TRPV4 and increases the levels of SLC2A1/GLUT1 and TRPV4 at the cell membrane. Inhibits the TRPV4 calcium channel activity.[UniProtKB/Swiss-Prot Function]