

Product datasheet for **MG206760**

Pskh1 (NM_173432) Mouse Tagged ORF Clone

Product data:

Product Type: Expression Plasmids
Product Name: Pskh1 (NM_173432) Mouse Tagged ORF Clone
Tag: TurboGFP
Symbol: Pskh1
Synonyms: AW539964; b2b1230Clo; E130013P03Rik
Mammalian Cell Selection: Neomycin
Vector: pCMV6-AC-GFP (PS100010)
E. coli Selection: Ampicillin (100 ug/mL)
ORF Nucleotide Sequence: >MG206760 representing NM_173432
 Red=Cloning site Blue=ORF Green=Tags(s)

TTTTGTAATACGACTCACTATAGGGCGGCCGGAATTCGTCGACTGGATCCGGTACCGAGGAGATCTGCC
 GCC**CGATCGCC**

ATGGGCTGTGGACAAGCAAGGTCCTTCTGAGCCACCAAGGATGTCCAGCTGGATCTGGTCAAGAAAG
 TGGAGCCCTTCAGTGGCACTAAGAATGATGTATACAAGCACTTCATCACAGAGGTGGACAGTGTGGCC
 TCTCAAAGCTGGCTTCCAGCTACTAGTCAGTATGCACCTCCCTGCCCTGGTGTCCCAATACTGGCCAC
 ACAGCGCCTCCTCAGAACCACCACGAAGGGCCAGGGTGGCAAAGTACAGGGCCAAATTTGACCCACGAG
 TGACAGCTAAGTATGATATAAAGGCCCTAATTGGGCGAGGCAGCTTTAGCCGAGTGGTACGTGTGGAGCA
 CCGGGCAACCCGACAGCCATATGCTATCAAGATGATAGAGACCAAGTACCGAGAAGGGCGGGAGGTGTGT
 GAGTCCGAGCTCCGAGTCTGCGCCGGGTGCGCCACGCCAACATCATCCAGCTGGTAGAAGTGTGGTGA
 CACAGGAGCGTGTATATAGGTGATGGAGCTGGCCACTGGCGGTGAGCTCTTTGACCCGATTATTGCCAA
 GGGTCTTTCACTGAACGAGATGCCACAAGAGTGCTTCAAATGGTACTGGATGGTGTCCGGTATCTTCAT
 GCCCTTGGCATTACACCCGAGACCTCAAGCCTGAGAATCTCCTTTACTACCACCCAGGCACTGACTCCA
 AGATCATCACTGACTTTGGCTTGGCCAGTGCCCGAAGAAAGGTGACGACTGCCTGATGAAGACCAC
 GTGGCGCACACCTGAGTACATTGCTCCTGAGGTTCTGGTGCGAAAACCTACACCAATCCGTGGATATG
 TGGGCACTGGGTGTCATTGCCTACATCCTGCTCAGCGGCACCATGCCCTTTGAGGATGACAAACCCACCC
 GGCTATACCGGCAGATCCTCAGGGGCAAATACAGTTATCTGGGGGAGCCCTGGCCTAGTGTATCTAATCT
 GGCCAAGGACTTCATTGACCGCCTGCTGACCGTGACCCTGGAGCCCGGATGACTGCACTGCAGGCCCTA
 AGACACCCATGGGTAGTAAGCATGGCAGCCTCTTCATCCATGAAGAATCTGCACCGATCCATCTCCAGA
 ATCTCCTCAAGCGGGCTTCTCTCGTTGCCAGAGCACCAAGTCTTCCAGTCCACGCGTTCCAGCCGCTC
 CACTCGTTCCAACAAGTACGCGCGTGTTCGGGAGCGGAACTGCGGGAGCTTAACCTGCGCTATCAACAG
 CAGTATAACGGC

AGCGGACCGACGCGTACGCGGCCGCTCGAG - GFP Tag - GTTTAA



[View online »](#)

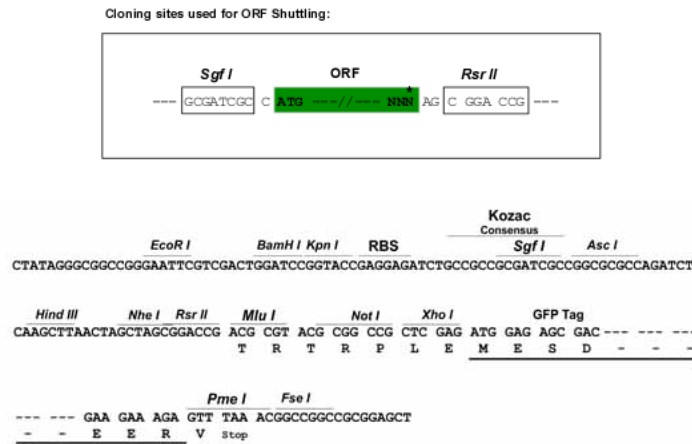
Protein Sequence: >MG206760 representing NM_173432
 Red=Cloning site Green=Tags(s)

MGCGTSKVLPEPPKDVQLDLVKKVEPFSGTKNDVYKHFITEVDSVGLKAGFPATSQYAPPCGVPNTGH
 TAPPSEPPRRARVAKYRAKFDPRVTAKYDIKALIGRSFSRVVREHVRATROPYAIKMIETKYREGREVC
 ESELRVLRVRHANIQLVEVFETQERVYVMELATGGELFDRIIAKGSFTERDATRVLQMLDGVRYLH
 ALGITHRDLPENLLYHPGTDISKIIITDFGLASARKKDDCLMKTTTCGTPEYIAPEVLVRKPYTNSVDM
 WALGVIAYILLSGTMPFEDDNTRLRYRQILRGKYSYLGEPPWSVSNLAKDFIDRLLTVDPGARMTALQAL
 RHPVWVMAASSSMKNLHRISQNLKRASSRCQSTKSSQSTRSSRSTRSNKSRVRERELRELNLRYQQ
 QYNG

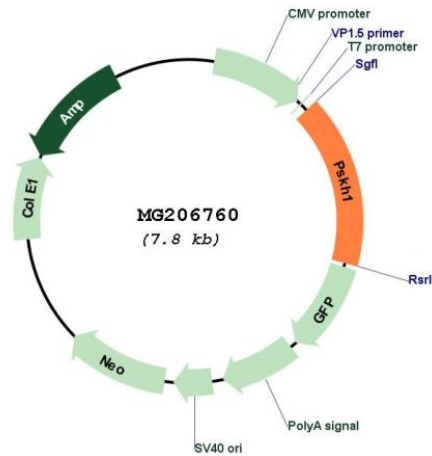
SGPTRRRLE - GFP Tag - V

Restriction Sites: SgfI-RsrII

Cloning Scheme:



Plasmid Map:



ACCN: NM_173432

ORF Size:	1272 bp
OTI Disclaimer:	The molecular sequence of this clone aligns with the gene accession number as a point of reference only. However, individual transcript sequences of the same gene can differ through naturally occurring variations (e.g. polymorphisms), each with its own valid existence. This clone is substantially in agreement with the reference, but a complete review of all prevailing variants is recommended prior to use. More info
OTI Annotation:	This clone was engineered to express the complete ORF with an expression tag. Expression varies depending on the nature of the gene.
Components:	The ORF clone is ion-exchange column purified and shipped in a 2D barcoded Matrix tube containing 10ug of transfection-ready, dried plasmid DNA (reconstitute with 100 ul of water).
Reconstitution Method:	<ol style="list-style-type: none">1. Centrifuge at 5,000xg for 5min.2. Carefully open the tube and add 100ul of sterile water to dissolve the DNA.3. Close the tube and incubate for 10 minutes at room temperature.4. Briefly vortex the tube and then do a quick spin (less than 5000xg) to concentrate the liquid at the bottom.5. Store the suspended plasmid at -20°C. The DNA is stable for at least one year from date of shipping when stored at -20°C.
RefSeq:	NM_173432.2 , NP_775608.1
RefSeq Size:	3317 bp
RefSeq ORF:	1275 bp
Locus ID:	244631
UniProt ID:	Q91YA2
Cytogenetics:	8 D3
Gene Summary:	May be a SFC-associated serine kinase (splicing factor compartment-associated serine kinase) with a role in intranuclear SR protein (non-snRNP splicing factors containing a serine/arginine-rich domain) trafficking and pre-mRNA processing.[UniProtKB/Swiss-Prot Function]