

Product datasheet for **MG206758**

Il13ra1 (NM_133990) Mouse Tagged ORF Clone

Product data:

Product Type:	Expression Plasmids
Product Name:	Il13ra1 (NM_133990) Mouse Tagged ORF Clone
Tag:	TurboGFP
Symbol:	Il13ra1
Synonyms:	AI882074; CD213a; CD213a1; IL-13R-alpha-1; IL-13r[a]; Il13ra; NR4
Mammalian Cell Selection:	Neomycin
Vector:	pCMV6-AC-GFP (PS100010)
E. coli Selection:	Ampicillin (100 ug/mL)
ORF Nucleotide Sequence:	>MG206758 representing NM_133990 Red=Cloning site Blue=ORF Green=Tags(s)

TTTTGTAATACGACTCACTATAGGGCGGCCGGAATTCGTCGACTGGATCCGGTACCGAGGAGATCTGCC
GCC**CGATCGCC**

ATGGCGCGCCAGCGCTGCTGGGCGAGCTGTTGGTGTGCTACTGTGGACCGCCACCGTGGGCCAAGTTG
CCGCGGCCACAGAAGTTCAGCCACCTGTGACGAATTTGAGCGTCTCTGTCGAAAATCTCTGCACGATAAT
ATGGACGTGGAGTCTCCTGAAGGAGCCAGTCAAATTCAGTCTCAGATATTTAGTCACTTTGATGAC
CAACAGGATAAGAAAATGCTCCAGAACTCATCGTAAAGAGGAATTACCCCTGGATGAGAAAATCTGTC
TGCAGGTGGGCTCTCAGTGTAGTGCCAATGAAAGTGAGAAGCCTAGCCCTTTGGTAAAAAGTGCATCTC
ACCCCTGAAGGTGATCCTGAGTCCGCTGTGACTGAGCTCAAGTGCATTTGGCATAACCTGAGCTATATG
AAGTGTTCCTGGCTCCCTGGAAGGAATACAAGCCCTGACACACTATACTCTGTACTATTGGTACAGCA
GCCTGGAGAAAAGTCGTCATGTGAAAACATCTATAGAGAAGGTCAACACATTGCTTGTCTTTAAATT
GACTAAAGTGAACCTAGTTTTGAACATCAGAACGTTCAAATAATGGTCAAGGATAATGCTGGGAAAATT
AGGCCATCCTGCAAAATAGTGTCTTTAACTTCTATGTGAAACCTGATCCTCCACATATTAACATCTTC
TCCTCAAAAATGGTGCCTTATTAGTGCAGTGAAGAATCCACAAAATTTAGAGGTTGAAGAGGACAAATGCCAG
AATTCGGAATCTGATAGAAACATGGAGGGTACAAGTTGTTTCCAACCTCCCTGGTCTCTTGCCGACGCTG
TCTACACAGTCAGAGTAAGAGTCAAACAACAAGTTATGCTTTGATGACAACAACTGTGGAGTGATTG
GAGTGAAGCACAGAGTATAGGTAAGGAGCAAACTCCACCTTCTACACCACCATGTTACTCACCATTCCA
GTCTTTGTGCGAGTGGCAGTCATAATCCTCCTTTTTTACCTGAAAAGGCTTAAGATCATTATATTTCTC
CAATTCCTGATCCTGGCAAGATTTTTAAAGAAATGTTTGGAGACCAGAATGATGATACCCTGCACTGGAA
GAAGTATGACATCTATGAGAAACAATCAAAGAAGAAACGGATTCTGTAGTGTGATAGAAAATCTGAAG
AAAGCAGCTCCT

ACGCGTACGCGGCCGCTCGAG - GFP Tag - GTTTAA



[View online »](#)

Protein Sequence: >MG206758 representing NM_133990
 Red=Cloning site Green=Tags(s)

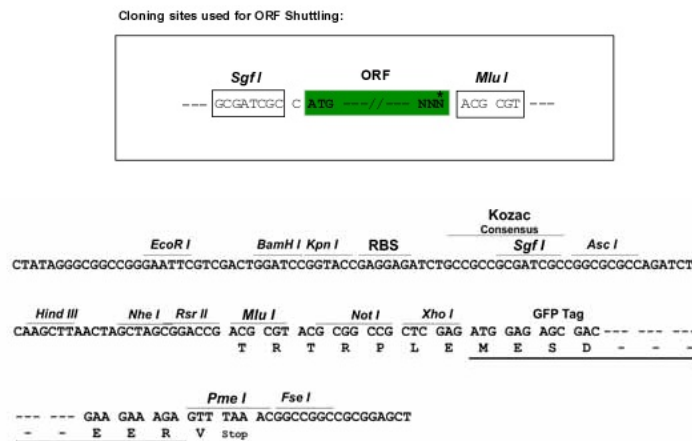
MARPALLGELLVLLLWTATVGVAAATEVQPPVTNLSVSVENLCTIIWTWSPPEGASPNCTLRYSHFDD
 QQDKKIAPETHRKEELPLDEKICLQVGSQCSANESEKPSPLVKKCISPPEGDPESAVTELKCIWHNLSYM
 KCSWLPGRNTSPDTHYTLYYWYSSLEKSRQCENIYREGQHIACSFKLTKEVPSFEHQNVQIMVKDNAGKI
 RPSCKIVSLTSYVKPDPPIKHLLLLKNGALLVQWKNPQNFRRSRLTYEVEVNNTQTDRHNILEVEEDKQ
 NSESDRNMEGTSCFQLPGVLADAVYTVRVRVKTNKLCFDDNKLWSDWSEAQSIGKEQNSTFYTTMLLTIP
 VFAVAVIILLFYLRKLIKIIFFPIPDGKIFKEMFGDQDDTLHWKKYDIYEKQSKEETDSVVLLENLK
 KAAP

TRTRPLE - GFP Tag - V

Chromatograms: https://cdn.origene.com/chromatograms/ja1847_b03.zip

Restriction Sites: SgfI-MluI

Cloning Scheme:



ACCN: NM_133990

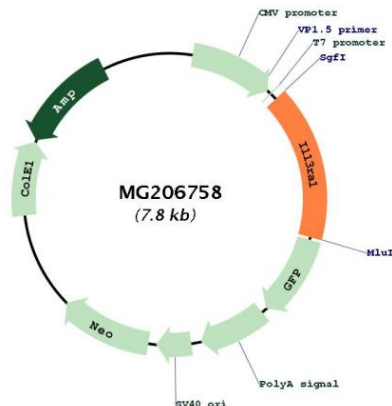
ORF Size: 1272 bp

OTI Disclaimer: Due to the inherent nature of this plasmid, standard methods to replicate additional amounts of DNA in E. coli are highly likely to result in mutations and/or rearrangements. Therefore, OriGene does not guarantee the capability to replicate this plasmid DNA. Additional amounts of DNA can be purchased from OriGene with batch-specific, full-sequence verification at a reduced cost. Please contact our customer care team at custsupport@origene.com or by calling 301.340.3188 option 3 for pricing and delivery.

The molecular sequence of this clone aligns with the gene accession number as a point of reference only. However, individual transcript sequences of the same gene can differ through naturally occurring variations (e.g. polymorphisms), each with its own valid existence. This clone is substantially in agreement with the reference, but a complete review of all prevailing variants is recommended prior to use. [More info](#)

OTI Annotation:	This clone was engineered to express the complete ORF with an expression tag. Expression varies depending on the nature of the gene.
Components:	The ORF clone is ion-exchange column purified and shipped in a 2D barcoded Matrix tube containing 10ug of transfection-ready, dried plasmid DNA (reconstitute with 100 ul of water).
Reconstitution Method:	<ol style="list-style-type: none">1. Centrifuge at 5,000xg for 5min.2. Carefully open the tube and add 100ul of sterile water to dissolve the DNA.3. Close the tube and incubate for 10 minutes at room temperature.4. Briefly vortex the tube and then do a quick spin (less than 5000xg) to concentrate the liquid at the bottom.5. Store the suspended plasmid at -20°C. The DNA is stable for at least one year from date of shipping when stored at -20°C.
RefSeq:	NM_133990.3
RefSeq Size:	3686 bp
RefSeq ORF:	1275 bp
Locus ID:	16164
UniProt ID:	O09030
Cytogenetics:	X 20.49 cM
Gene Summary:	This gene encodes a transmembrane protein that complexes with interleukin 4 receptor alpha (IL4RA) to form a functional receptor for interleukin-13. Signalling through this pathway mediates allergy response and occurs during bronchial asthma. [provided by RefSeq, May 2015]

Product images:



Circular map for MG206758