

Product datasheet for **MG206748**

Irf8 (NM_008320) Mouse Tagged ORF Clone

Product data:

Product Type:	Expression Plasmids
Product Name:	Irf8 (NM_008320) Mouse Tagged ORF Clone
Tag:	TurboGFP
Symbol:	Irf8
Synonyms:	AI893568; IC; Ics; ICSBP; Icsbp1; IRF; IRF-8; My; Myls
Mammalian Cell Selection:	Neomycin
Vector:	pCMV6-AC-GFP (PS100010)
E. coli Selection:	Ampicillin (100 ug/mL)
ORF Nucleotide Sequence:	>MG206748 representing NM_008320 Red=Cloning site Blue=ORF Green=Tags(s)

TTTTGTAATACGACTCACTATAGGGCGGCCGGAATTCGTCGACTGGATCCGGTACCGAGGAGATCTGCC
GCC**CGATCGCC**

ATGTGTGACCGGAACGGCGGGCGGGCTGCGGCAGTGGCTGATCGAACAGATCGACAGCAGCATGTACC
CGGGGCTGATCTGGAAAATGATGAGAAGACCATGTTCCGTATCCCCTGGAAGCATGCCGGCAAGCAGGA
TTACAATCAGGAGGTGGATGCTTCCATCTTCAAGGCCTGGCAGTTTTTAAAGGGAAGTTTAAAGAGGGA
GACAAAGCTGAACCAGCCACGTGGAAGACGAGGTTACGCTGTGCTCTGAACAAGAGCCCAGATTTTGAAG
AAGTGACTGACCGGTCCCAGCTGGACATTTCTGAGCCATAAAAGTTTACCGAATTGTCCCGAGGAAGA
ACAAAAATGCAAGCTGGGCGTGGCACCTGCAGGCTGCATGAGCGAAGTTCCTGAGATGGAGTGTGGCCGC
TCAGAGATTGAGGAGCTGATCAAGGAACCTTCTGTGGATGAGTACATGGGTATGACCAAGAGGAGCCCAT
CCCCACCAGAGGCTGCAGGAGCCAGATCCTCCCTGACTGGTGGGTCCAGCAGCCAGTGCAGGCCTGCC
ACTGGTGACCGGATATGCCGCCTATGACACACACCATTAGCTTTCTCCCAGATGGTCACTAGCTTCTAC
TACGGGGCAAGCTGGTGGGCCAGGCCACCACCACCTGCCTTGAAGGCTGCCGTCTCTCCCTGAGCCAGC
CGGGGCTGCCTAAGTTGTATGGGCCGATGGCCTGGAACCCGTGTGCTTCCGACGGCCGACACCATCCC
CAGTGAGCGGCAGAGGCAGGTGACCCGGAAGCTGTTGGGCACCTGGAACGTGGCGTCTACTGCACAGC
AACCGCAAGGGCGTGTTCGTGAAGCGGCTGTGCCAGGGCCGCTGTTCTGCAGCGCAACCGGTTGGTGT
GCAAGGGCAGGCCAACAAGCTGGAGCGGGACGAGGTGGTGCAGGTCTTTGACACCAACCAGTTCATCCG
AGAGCTGCAGCAATTCTACGCCACCAGAGCCGCTACCTGACAGCAGGTTGGTCTGTGCTTCCGGGAG
GAGTTTCCGGACTGTGCCCTTGCCTCCAACTCATTCTGGTGCAGGTAGAGCAGCTGTATGCCAGGC
AGCTGGTGGAGGAAGCGGGCAAGAGCTGCGGTGCTGGCTCCCTGATGCCAGCCCTGGAGGAGCCCCAGCC
GGACCAGGCTTCCGCATGTTCCGGATATCTGTACCTCACACCAGAGACCCTTTTTTAGAGAAAATCAA
CAGATCACCGTC

ACGCGTACGCGGCCGCTCGAG - GFP Tag - GTTTAA



[View online »](#)

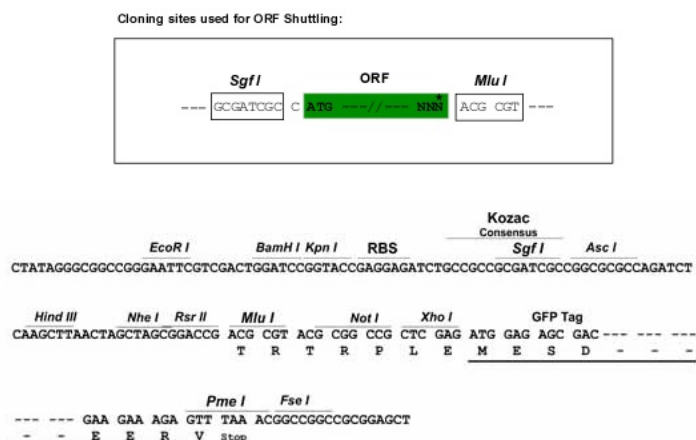
Protein Sequence: >MG206748 representing NM_008320
Red=Cloning site Green=Tags(s)

MCDRNGGRRLRQWLIEQIDSSMYPGLIWENDEKTMFRIPWKHAGKQDYNQEVDASIFKAWAVFKGKFKEG
 DKAEPATWKTRLRCALNKSPDFEEVTDRLSDISEPYKVYRIVPEEEQKCKLGVAPAGCMSEVPMECCGR
 SEIEELIKEPSVDEYMGMTKRSPSPPEACRSQILPDWWVQQPSAGLPLVTGYAAADTHHSFAFSQMVISFY
 YGGKLVGQATTTCLEGCRLLSLSQPGLPKLYGPDGLEPVCFTADTIPSERQRQVTRKLFGLHRLERGVLLHS
 NRKGVFVKRLCQGRVFCSGNAVVCKGRPNKLERDEVVQVFDTNQFIRELQQFYATQSRLPDSRVVLCFGE
 EFPDTPVLRSKLILVQVEQLYARQLVEEAGKSCGAGSLMPALEEPQPDQAFRMFPDICTSHQRPFFRENQ
 QITV

TRTRPLE - GFP Tag - V

Restriction Sites: SgfI-MluI

Cloning Scheme:



ACCN: NM_008320

ORF Size: 1272 bp

OTI Disclaimer: The molecular sequence of this clone aligns with the gene accession number as a point of reference only. However, individual transcript sequences of the same gene can differ through naturally occurring variations (e.g. polymorphisms), each with its own valid existence. This clone is substantially in agreement with the reference, but a complete review of all prevailing variants is recommended prior to use. [More info](#)

OTI Annotation: This clone was engineered to express the complete ORF with an expression tag. Expression varies depending on the nature of the gene.

Components: The ORF clone is ion-exchange column purified and shipped in a 2D barcoded Matrix tube containing 10ug of transfection-ready, dried plasmid DNA (reconstitute with 100 ul of water).

Reconstitution Method:

1. Centrifuge at 5,000xg for 5min.
2. Carefully open the tube and add 100ul of sterile water to dissolve the DNA.
3. Close the tube and incubate for 10 minutes at room temperature.
4. Briefly vortex the tube and then do a quick spin (less than 5000xg) to concentrate the liquid at the bottom.
5. Store the suspended plasmid at -20°C. The DNA is stable for at least one year from date of shipping when stored at -20°C.

RefSeq: [NM_008320.4](#)

RefSeq Size: 2829 bp

RefSeq ORF: 1275 bp

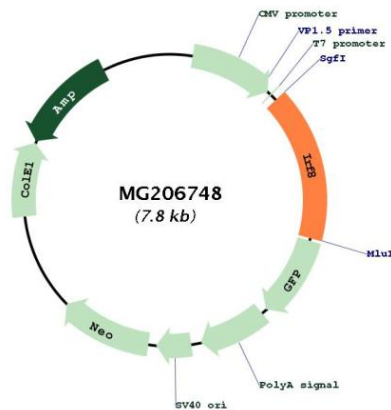
Locus ID: 15900

UniProt ID: [P23611](#)

Cytogenetics: 8 70.05 cM

Gene Summary: The protein encoded by this gene is a transcription factor that belongs to the interferon regulatory factor family. Proteins belonging to this family have a DNA binding domain at the amino terminus that contains five well-conserved tryptophan-rich repeats. This domain recognizes DNA sequences similar to the interferon-stimulated response element. The protein encoded by this gene promotes or suppresses lineage-specific genes to regulate the differentiation of lymphoid and myeloid lineage cells. Alternative splicing results in multiple transcript variants. [provided by RefSeq, Sep 2014]

Product images:



Circular map for MG206748