

## Product datasheet for **MG206737**

### Avpr1a (NM\_016847) Mouse Tagged ORF Clone

#### Product data:

**Product Type:** Expression Plasmids  
**Product Name:** Avpr1a (NM\_016847) Mouse Tagged ORF Clone  
**Tag:** TurboGFP  
**Symbol:** Avpr1a  
**Synonyms:** AVPR; Avpr1; V; V1a; V1aR  
**Mammalian Cell Selection:** Neomycin  
**Vector:** pCMV6-AC-GFP (PS100010)  
**E. coli Selection:** Ampicillin (100 ug/mL)  
**ORF Nucleotide Sequence:** >MG206737 representing NM\_016847  
Red=Cloning site Blue=ORF Green=Tags(s)

TTTTGTAATACGACTCACTATAGGGCGGCCGGAATTCGTCGACTGGATCCGGTACCGAGGAGATCTGCC  
 GCCCGATCGCC

ATGAGTTTCCCGCAGGGCTCCCACGATCTGCCCGGGCAACTCCAGCCCGTGGTGGCCTCTGACCACCG  
 AGGGCGCCAACAGCAGCCGGGAAGCAGCTGGGCTCGGGGAAGGGCGGCAGCCCGCGGGGACGTACGCAA  
 CGAGGAGCTGGCGAAGCTGGAGTTACCGTCTGGCGGTATTTTCGTGGTGGCCGTCTGGTAATAGC  
 AGTGTGCTGCTGGCGCTGCATCGCACGCCACGCAAGACATCCCGCATGCATCTCTTCATCCGACACCTCA  
 GCCTGGCAGACCTGGCGGTGCCTTCTTCCAAGTGTACCACAGCTGTGCTGGGACATCACCTACCGCTT  
 CCGCGGGCCGGACTGGCTGTGCCGGTGGTGAAGCACTTGCAAGTGTTCGCATGTTTCGCATCTTCTCTAC  
 ATGCTGGTGGTATGACGGCTGACCGCTACATCGCCGTGTGCCACCCGCTCAAGACCCTGCAGCAGCCCG  
 CGCGCCGCTCGCGCCTCATGATCGCCGCTCTTGGGGCTGAGTTTCGTTCTGAGCATACCACAGTACTT  
 TATCTTCTGTGATCGAATTTGAGGTGAACAATGGCACCAAAGCCAAAGATTGCTGGGCTACCTTCATC  
 CCGCCCTGGGGTACCCGTGCCTACGTGACCTGGATGACCAGCGGGGTCTTCGTGGTACCCGTGATCATCT  
 TGGGTACCTGCTATGGCTTCATCTGTTACCACATCTGGCGCAATGTCGAGGGAAGACAGCATCGCGACA  
 GAGCAAAGCGGCAAGGGCTCTGGGAAGCCGCGGGTCCCTTCCACAAGGGGCTTCTGGTACGCCCTGT  
 GTCAGCAGCTGAAGAGCATTTCCCGTCCAAGATCCGCACAGTGAAGATGACCTTTGTGATTGTAAGCG  
 CCTACATCTCTGCTGGACACCTTTCTTCATCGTCCAGATGTGGTCAGTCTGGGATACCAATTTCTGTTG  
 GACCGATTCCGAAAACCTTCCACCACGATCACGGCGTTACTGGCTTCTTGAACAGCTGCTGCAACCCG  
 TGGATCTACATGTTTTTGTGGTTCATCTCCTACAAGATTGTGTCCAGAGCTTCCATGCTGCCAAAGCA  
 TAGCGCAGAAATTCGCCAAGGATGACTCGGATAGCATGAGCCGGAGACAGACATCTTATTCTAACAACCG  
 AAGCCCAACAACAGCACTGGGACGTGGAAGGATTCACCTAAATCTTCAAAGTCCATCAGATTTATCCCT  
 GTCTCCACT

ACGCGTACGCGGCCGCTCGAG - GFP Tag - GTTTAA



[View online »](#)

**Protein Sequence:** >MG206737 representing NM\_016847  
 Red=Cloning site Green=Tags(s)

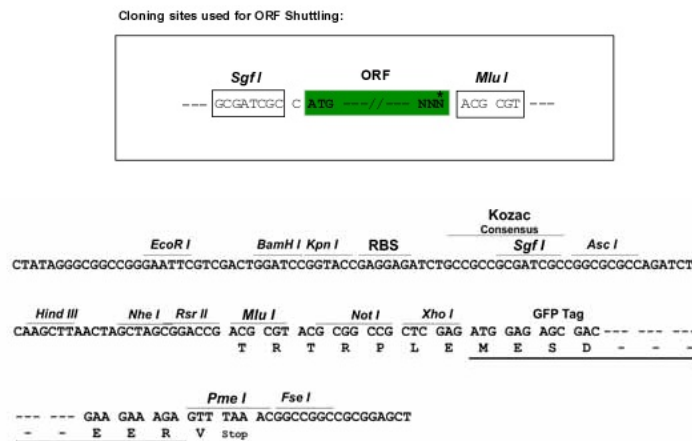
```
MSFPRGSHDLPAGNSSPWPLTTEGANSSREAAGLGEGGSPPGDVRNEELAKLEVTVLAVIFVAVLGN
SVLLALHRTPRKTSRMHLFIRHLADLAVAFFQVLPQLCWDITYRFRGPDWLCRVVVKHLQVFMFASSY
MLVVMTADRYIAVCHPLKTLQQPARRSRLMIAASWGLSFVLSIPQYFIFSVIEFEVNNGTAKQDCWATFI
PPWGTRAYVTWMTSGVFVVPVILGTCTCYGFCYHIWRNVRGKTASRQSKGGKSGEAGPFHKGLLVTPC
VSSVKSISRKIRTVKMTFVIVSAYILCWTPFFIVQMWSVWDTNFVWTDSENSTTITALLASLNSCCNP
WIYMFSSGHLLQDCVQSFPCQCSIAQKFAKDDSDSMSRRQTSYSNNRSPNNTGTWKDSPKSSKSIKIP
VST
```

TRTRPLE - GFP Tag - V

**Chromatograms:** [https://cdn.origene.com/chromatograms/ja2173\\_f08.zip](https://cdn.origene.com/chromatograms/ja2173_f08.zip)

**Restriction Sites:** SgfI-MluI

**Cloning Scheme:**



**ACCN:** NM\_016847

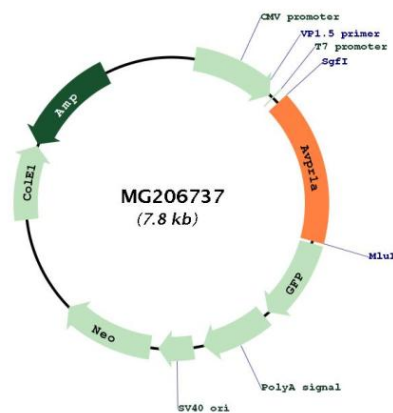
**ORF Size:** 1269 bp

**OTI Disclaimer:** Due to the inherent nature of this plasmid, standard methods to replicate additional amounts of DNA in E. coli are highly likely to result in mutations and/or rearrangements. Therefore, OriGene does not guarantee the capability to replicate this plasmid DNA. Additional amounts of DNA can be purchased from OriGene with batch-specific, full-sequence verification at a reduced cost. Please contact our customer care team at [custsupport@origene.com](mailto:custsupport@origene.com) or by calling 301.340.3188 option 3 for pricing and delivery.

The molecular sequence of this clone aligns with the gene accession number as a point of reference only. However, individual transcript sequences of the same gene can differ through naturally occurring variations (e.g. polymorphisms), each with its own valid existence. This clone is substantially in agreement with the reference, but a complete review of all prevailing variants is recommended prior to use. [More info](#)

<b>OTI Annotation:</b>	This clone was engineered to express the complete ORF with an expression tag. Expression varies depending on the nature of the gene.
<b>Components:</b>	The ORF clone is ion-exchange column purified and shipped in a 2D barcoded Matrix tube containing 10ug of transfection-ready, dried plasmid DNA (reconstitute with 100 ul of water).
<b>Reconstitution Method:</b>	<ol style="list-style-type: none"><li>1. Centrifuge at 5,000xg for 5min.</li><li>2. Carefully open the tube and add 100ul of sterile water to dissolve the DNA.</li><li>3. Close the tube and incubate for 10 minutes at room temperature.</li><li>4. Briefly vortex the tube and then do a quick spin (less than 5000xg) to concentrate the liquid at the bottom.</li><li>5. Store the suspended plasmid at -20°C. The DNA is stable for at least one year from date of shipping when stored at -20°C.</li></ol>
<b>RefSeq:</b>	<a href="#">NM_016847.2</a> , <a href="#">NP_058543.2</a>
<b>RefSeq Size:</b>	2671 bp
<b>RefSeq ORF:</b>	1272 bp
<b>Locus ID:</b>	54140
<b>UniProt ID:</b>	<a href="#">Q62463</a>
<b>Cytogenetics:</b>	10 D2
<b>Gene Summary:</b>	This gene encodes a receptor for arginine vasopressin, a neurohypophyseal hormone involved in diuresis inhibition, smooth muscle contraction, liver glycogenolysis stimulation and regulation of adrenocorticotrophic hormone release from the pituitary. This receptor represents one of three G protein-coupled arginine vasopressin receptors which functions through a phosphatidylinositol-calcium second messenger system in vascular and hepatic tissues [provided by RefSeq, Jul 2008]

## Product images:



Circular map for MG206737