

Product datasheet for **MG206667**

Tasp1 (NM_175225) Mouse Tagged ORF Clone

Product data:

Product Type:	Expression Plasmids
Product Name:	Tasp1 (NM_175225) Mouse Tagged ORF Clone
Tag:	TurboGFP
Symbol:	Tasp1
Synonyms:	4930485D02Rik; AW986064
Mammalian Cell Selection:	Neomycin
Vector:	pCMV6-AC-GFP (PS100010)
E. coli Selection:	Ampicillin (100 ug/mL)
ORF Nucleotide Sequence:	>MG206667 representing NM_175225 Red=Cloning site Blue=ORF Green=Tags(s)

TTTTGTAATACGACTCACTATAGGGCGGCCGGAATTCGTCGACTGGATCCGGTACCGAGGAGATCTGCC
GCC**CGATCGCC**

ATGATCATGGAGAAGGGGATGAATTCTGGAGAAGGACTGCCTTCCAGATCATCTCAGGCATCTGCTGCTA
AAGTAACAGTCAAGGAGTTAGAAACACAGCAGCCCTGTAAGGAGAAACGAGGGGGCTTTGTGCTGGTGCA
TGCAGGTGCAGGCTATCATTCTGAATCCAAAGCCAAGGAATATAAACATGTATGCAAACGAGCTTGTGCA
AAGGCAATTGAGAAGCTACAGGCTGGTGTCTTGTCTACAGATGCAGTGGCTGCTGCTCTGGTGGAACTTG
AGGATTCTCCTTTTACAAATGCAGGAATAGGATCTAATCTAAATCTCTTAGGAGAGATTGAATGTGATGC
CAGCATAATGGATGGAAAGTCTTAAACTTTGGAGCCGTTGGAGCACTGAGTGGAAATCAAGAATCCAGTC
TCAGTTGCTCACAGGCTCTTGTGTGAAGGGCAGAAGGGCAAGCTCTCTGCAGGCAGAATTCCTCCCTGCT
TTTTAGTTGGAGAAGGAGCCTACAGATGGGCAGTGGATCATGGGATACCCCTTTGCCCTCTAGCACCAT
GACCACAAGATTCAGCTTAGCTGCATTTAAAAGGAACAAGAGGAAACTAGAGCTGGCAGAAAGGGTGGAA
ACAGACTTCATCCAGCTGAAGAGAAGACGACAATCAAGCGCAAAGGAAAATGACTCAGGCACTTTGGACA
CGGTGGGTGCTGTGGTCGTGGATCACGAAGGGAATGTTGCTGTCTGTCTCCAGTGGGGCTTGGCCTT
GAAACATCCAGGGAGAGTTGGCAGGCTGCTCTTATGGATGTGGCTGCTGGGCTGAGAATACTGGCGT
CAGAACCCTACTCCACAGCTGTGAGTACCTCAGGATGTGGCAGCATCTTGTGGCACCATACTGGCTA
GAGAATGTTACACGCTTTACAAGCTGAAGATGCTCACCAAGCTCTGTTGGAGACTATGCAAACAAGTT
TATCAGTTCACCTTTCTTGCCTGTGAAGATGGCGTGCTCGGTGGAGTGATCGTTCTCCGGTTCATGCAGA
TGTTCTTCAGAGTCTGACTCCTCCCAAGATAAACAGACTGCTTGTGGAATTTCTGTGGAGCCATACTA
CAGAGAGCATGTGCGTGGGATATATGTCAGCCCAGGACGGCAAAGCAAGACTCACATTTACGACTCCC
TCCTGGTGTGTGGCAGGACAGTCTGTTGCCATCGAAGTGGGGTTTGGCGCTGGAGAGCCCCGTGAAC

ACGCGTACGCGGCCGCTCGAG - GFP Tag - GTTTAA



[View online >](#)

Protein Sequence: >MG206667 representing NM_175225
 Red=Cloning site Green=Tags(s)

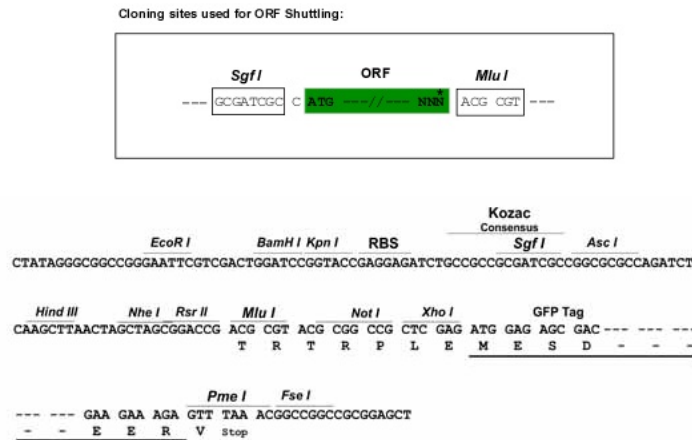
MIMEKGMNSGEGLPSSQASAAKVTVKELETQQPCKEKRGGFVLVHAGAGYHSESKAKEYKHVCKRACQ
 KAIEKLQAGALATDAVAALVELEDSPFTNAGIGSNLNLGIECDASIMDGKSLNFGAVGALSGIKNPV
 SVAHRLLCGQKGLSAGRIPPCFLVGEAYRWVDHGIPSCPPSTMTRFSLAAFKRNRKLELAERVE
 TDFIQLKRRRQSSAKENDSGTLDTVGAVVVDHEGNVAAAVSSGGLALKHPGRVQQAALYGCGCWAENTGA
 QNPYSTAVSTSGGEHLVRTILARECSHALQAEDAHQALLETMQNKFISSPFLACEDGVLGGVIVLRSCR
 CSSESDDSQDKQTLLVEFLWSHTTESMCMVGYMSAQDGKAKTHISRLPPGAVAGQSVAIIEGGVCRLESPVN

TRTRPLE - GFP Tag - V

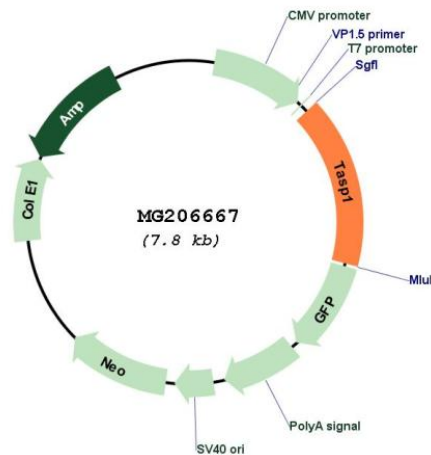
Restriction Sites:

SgfI-MluI

Cloning Scheme:



Plasmid Map:



ACCN:

NM_175225

ORF Size:	1260 bp
OTI Disclaimer:	The molecular sequence of this clone aligns with the gene accession number as a point of reference only. However, individual transcript sequences of the same gene can differ through naturally occurring variations (e.g. polymorphisms), each with its own valid existence. This clone is substantially in agreement with the reference, but a complete review of all prevailing variants is recommended prior to use. More info
OTI Annotation:	This clone was engineered to express the complete ORF with an expression tag. Expression varies depending on the nature of the gene.
Components:	The ORF clone is ion-exchange column purified and shipped in a 2D barcoded Matrix tube containing 10ug of transfection-ready, dried plasmid DNA (reconstitute with 100 ul of water).
Reconstitution Method:	<ol style="list-style-type: none">1. Centrifuge at 5,000xg for 5min.2. Carefully open the tube and add 100ul of sterile water to dissolve the DNA.3. Close the tube and incubate for 10 minutes at room temperature.4. Briefly vortex the tube and then do a quick spin (less than 5000xg) to concentrate the liquid at the bottom.5. Store the suspended plasmid at -20°C. The DNA is stable for at least one year from date of shipping when stored at -20°C.
RefSeq:	NM_175225.5
RefSeq Size:	2374 bp
RefSeq ORF:	1263 bp
Locus ID:	75812
UniProt ID:	Q8R1G1
Cytogenetics:	2 F3
Gene Summary:	Protease involved in KMT2A/MLL1 processing and, consequently, in the correct expression of the early HOXA gene cluster.[UniProtKB/Swiss-Prot Function]