

Product datasheet for **MG206604**

Pgk2 (NM_031190) Mouse Tagged ORF Clone

Product data:

Product Type: Expression Plasmids
Product Name: Pgk2 (NM_031190) Mouse Tagged ORF Clone
Tag: TurboGFP
Symbol: Pgk2
Synonyms: Pgk-2; Tcp-2
Mammalian Cell Selection: Neomycin
Vector: pCMV6-AC-GFP (PS100010)
E. coli Selection: Ampicillin (100 ug/mL)
ORF Nucleotide Sequence: >MG206604 representing NM_031190
 Red=Cloning site Blue=ORF Green=Tags(s)

TTTTGTAATACGACTCACTATAGGGCGGCCGGAATTCGTCGACTGGATCCGGTACCGAGGAGATCTGCC
 GCC**CGATCGCC**

ATGGCTCTTTCTGCTAAGTTGACTCTGGACAAAGTGGATCTTAAGGGAAAAAGAGTAATCATGAGAGTAG
 ACTTCAACGTTCCCATGAAGAATAACCAAATTACAACAACCAGAGAATCAAGGCTGCCATCCCAAGTAT
 CAAGCACTGTCTGGACAATGGAGCCAAGTCCGTAGTTCTCATGAGTCACCTCGGTCGGCCTGATGGTATC
 CCTATGCCAGACAAGTATTCATTAGAGCCTGTTGCTGATGAGCTCAAGTCCCTGTGAACAAGGACGTCA
 TATTCTTGAAGGACTGTGTGGCCCTGAAGTAGAGCAAGCCTGTGCCAACCCAGATAATGGGTCTATCAT
 CCTGCTGGAGAACCTGCGCTTCCATGTGGAGGAAGAAGGTAAAGGTTAAAGATTCTTCTGGAAAAAGATT
 AGTGCTGACCCTGCTAAAGTAGAAGCCTTCCAAGCATCACTGTCTAAACTTGGCGATGTCTATGTCAACG
 ATGCATTTGGCACTGCACATCGGGCTCACAGTTCTACGGTCCGAGTAAATTTGCCCCAGAAGGCATCTGG
 TTTCTTATGAAGAAGGAAGTGGATTATTTTTCCAAGGCTTTAGAAAAGCCAGAGAGGCCCTTCTGGCT
 ATCCTTGGTGGAGCCAAAGTGAAGACAAGATCCAACCTCATAAAAAATATGTTAGACAAAGTCAATTTCA
 TGATTATTGGTGGTGGAAATGGCTTACACCTTCTGAAAGAACTCAAGAACATGCAGATTGGTGCTTCTCT
 GTTTTGAAGAGGGAGCCACGATTGTTAAAGAGATCATGGAAAAAGCAGAAAAGAAATGGTGAAGATA
 GTTTTTCTGTTGACTTTGTTACTGGTGACAAGTTTGTGAGAATGCTAAAGTTGGACAAGCCATATAG
 AATCTGGTATACCATCTGGTTGGATGGGCTTGGACTGTGGCCCTGAGAGCATTAAAAATCAATGCTCAAAT
 TGTGGCCCAAGCAAAGCTGATAGTTTGGAAATGGACCTATTGGGGTATTTGAATGGGATGCCTTTGTAA
 GGAACCAAAGCTCTCATGGATGAAGTTGTAAAGGCCACCTCCAATGGCTGTGCACCATTATAGGAGGCG
 GAGATACTGCTACTTGTGCGCCAAATGGGGCACTGAAGACAAGGTGAGCCATGTGAGCACAGGAGGTGG
 GGCAAGTCTTGAGCTTCTGGAAGTAAATCCTTCCAGGGGTAGAGGCCCTCAGCAACATG

ACGCGTACGCGGCCGCTCGAG - GFP Tag - **GTTTAA**



[View online »](#)

Protein Sequence: >MG206604 representing NM_031190
Red=Cloning site Green=Tags(s)

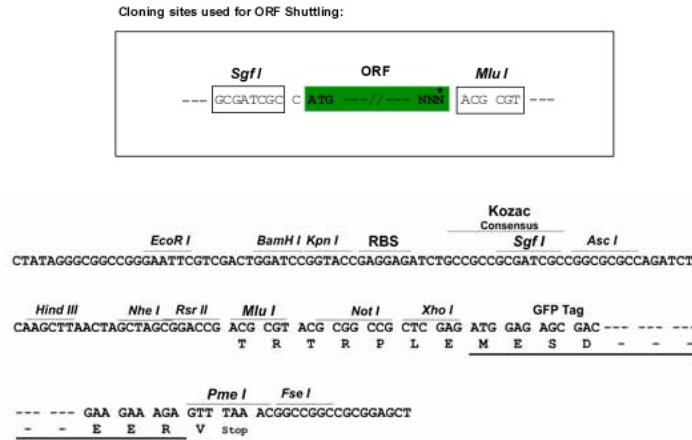
MALSAKLTLDKVDLKGKRVIMRVDFNVPKNNQITNNQRIKAAIPSIKHCLDNGAKSVVLSHMLGRPDGI
 PMPDKYSLEPVADELKSLLNKDVIFLKDCVGPVEVQACANPDNGSIILLENLRFHVVEEGKGDSSGKKI
 SADPAKVEAFQASLSKLGDVYVNDAFGTAHRAHSSTVGVNLPQKASGFLMKKELDYFSKALEKPERPFLA
 ILGGAKVKDKIQLIKNMLDKVNFMIIGGMAYTFLKELKNMQIGASLFDEEGATIVKEIMEKAENGVKI
 VFPVDFVTGDKFDENAKVGQATIESGIPSGWMGLDCGPESIKINAQIVAQAQLIVWNGPIGVFEWDAFAK
 GTKALMDEVVKATSNGCVTIIGGGDTATCCAkwGTEDKvSHVSTGGGASLELLEGGKILPGVEALSNM

TRTRPLE - GFP Tag - V

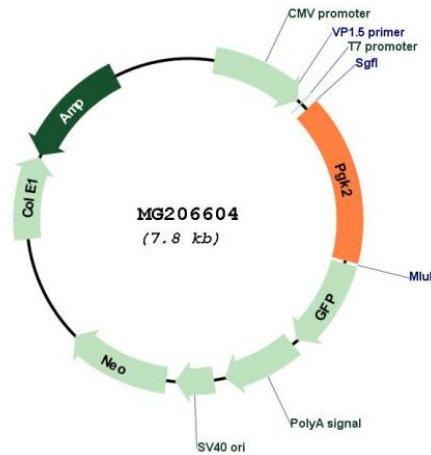
Restriction Sites:

Sgfl-MluI

Cloning Scheme:



Plasmid Map:



ACCN:

NM_031190

ORF Size:	1251 bp
OTI Disclaimer:	The molecular sequence of this clone aligns with the gene accession number as a point of reference only. However, individual transcript sequences of the same gene can differ through naturally occurring variations (e.g. polymorphisms), each with its own valid existence. This clone is substantially in agreement with the reference, but a complete review of all prevailing variants is recommended prior to use. More info
OTI Annotation:	This clone was engineered to express the complete ORF with an expression tag. Expression varies depending on the nature of the gene.
Components:	The ORF clone is ion-exchange column purified and shipped in a 2D barcoded Matrix tube containing 10ug of transfection-ready, dried plasmid DNA (reconstitute with 100 ul of water).
Reconstitution Method:	<ol style="list-style-type: none">1. Centrifuge at 5,000xg for 5min.2. Carefully open the tube and add 100ul of sterile water to dissolve the DNA.3. Close the tube and incubate for 10 minutes at room temperature.4. Briefly vortex the tube and then do a quick spin (less than 5000xg) to concentrate the liquid at the bottom.5. Store the suspended plasmid at -20°C. The DNA is stable for at least one year from date of shipping when stored at -20°C.
RefSeq:	NM_031190.2 , NP_112467.2
RefSeq Size:	1530 bp
RefSeq ORF:	1254 bp
Locus ID:	18663
UniProt ID:	P09041
Cytogenetics:	17 19.44 cM
Gene Summary:	Essential for sperm motility and male fertility but is not required for the completion of spermatogenesis (PubMed:19759366).[UniProtKB/Swiss-Prot Function]