

Product datasheet for **MG206595**

Wnt10a (NM_009518) Mouse Tagged ORF Clone

Product data:

Product Type:	Expression Plasmids
Product Name:	Wnt10a (NM_009518) Mouse Tagged ORF Clone
Tag:	TurboGFP
Symbol:	Wnt10a
Mammalian Cell Selection:	Neomycin
Vector:	pCMV6-AC-GFP (PS100010)
E. coli Selection:	Ampicillin (100 ug/mL)
ORF Nucleotide Sequence:	>MG206595 representing NM_009518 Red=Cloning site Blue=ORF Green=Tags(s)

TTTTGTAATACGACTCACTATAGGGCGGCCGGAATTCGTCGACTGGATCCGGTACCGAGGAGATCTGCC
GCC**CGATCGCC**

ATGGGCAGCGCCACCCTCGCCCTGGCTGCGGCTCCCACAAGGGCCCCAGCCGCGGCTGAGTTCTGGG
CGCTCCTGTTCTTCTACTGTGCTGGCTGCCGCTGTGCCAGGTGAGCACCACGACATCCTGGGCT
CCGCTACCCAGAGCCCGTGTCAACGCCAACACAGTGTGCCTGACATTGCCCGGCTGAGCCGGCGG
CAGATGGAGGTGTGTGCGTCACCTGACGTGGCCGCTCTGCTATCCAGGGCATCCAGATCGCCATCC
ATGAGTGCCAGCATCAGTTCGGGACCAGCGCTGGAAGTCCAGCCTGGAGACTCGGAACAAAGTCCC
CTACGAGAGCCCCATCTTACGCCGAGGTTTTCGAGAGAGTGCTTTGCGCTACGCCATAGCAGCTGCCGGG
GTGGTGACGCAGTGTCCAACGCGTGCCTCTGGGTAAGTGAAGGCTTGCAGGTTGCGACGCTCCAGAC
GTGGGACGAAGAAGCTTCCGTCGGAAGCTGCACCGCTTGCAGCTGGACGCGCTGCAGCGCGAAAGGG
CTTGAGCCACGGGTCCTGAACACCCGGCCATACTTCTGCCAGCCAGGTCTGCAGGACTCCTGGGAG
TGGGGTGGCTGCAGTCCGGATGTGGCTTCGGAGAACGCTTCTAAGGACTTTCTGGACTCCCAGAGC
CTCACAGAGACATCCATGCTCGAATGAGACTCCACAACAACCGTGTGGGCCGGCAGGCGGTGATGGAGAA
CATGCGGCGTAAGTGAAATGCCACGGCACCTCAGGCAGCTGCCAGCTCAAGACCTGCTGGCAGGTGACG
CCTGAGTTCGGCACAGTAGGGGCGCTGCTGCGCAACCGCTTCCACCGCGCCAGCTCATCCGGCCGACA
ACCGCAACGGTGGCCAGCTGGAGCCCGGCCCGGGGAGCACCTCGCCAGCACCGGGCACTCCAGGGCT
GCGCCGACGGCCAGCCACTCCGACCTGGTCTACTTTGAGAAATCTCCGACTTCTGTGAGCGCGAGCCG
CGCCTGGACTCGGCAGGCACTGTGGCCGCTGTGCAATAAGAGCAGCACGGGTCCCAGTGGCTGCGGCA
GCATGTGCTGTGGCCGCGGCCACAACATTTGCGCCAGACGCGCAGCGAGCGCTGCCACTGCCGTTCCA
CTGGTGTGCTTCGTGGTCTGCGAAGAATGCCGCATCACCAGTGGGTGACGCTGCAAG

AGCGGACCGACGCGTACGCGGCCGCTCGAG - GFP Tag - GTTTAA



[View online »](#)

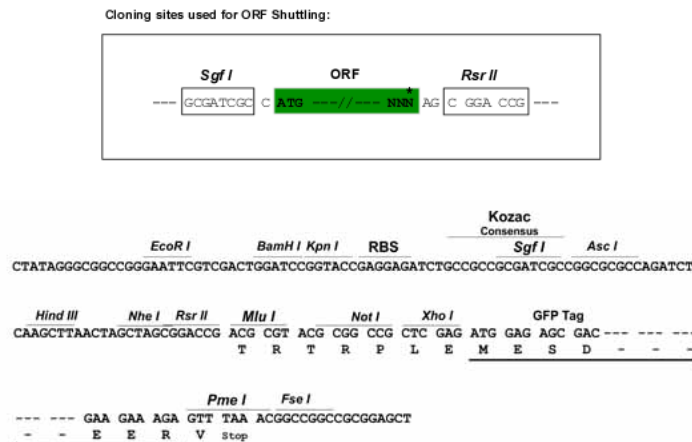
Protein Sequence: >MG206595 representing NM_009518
 Red=Cloning site Green=Tags(s)

MGSAHPRPWLRLPQGPQPRPEFWALLFFLLLLAAAVPRSAPNDILGLRLPPEPVLNANTVCLTLPGLSRR
 QMEVCVRHPDVAASAIQGIQIAIHECQHFRDQRWNCSSLETRNKVPYESPIFSRGFRESAFAYAIAAAG
 VVHAVSNACALGKLKACGCDASRRGDEEAFRRKLHRLQLDALQRGKGLSHGVPEHPAILPASPGLQDSWE
 WGGCSPDVGFGERFSKDFLDSREPHRDIHARMRLHNNRVGRQAVMENMRRKCKCHGTSGSCQLKTCWQVT
 PEFRTVGALLRNRFHRA TLIRPHNRNGQLLEPGPAGAPSPAGTPGLRRRASHSDLVYFEKSPDFCEREP
 RLDSAGTVGRLCNKSSTGPDGCGSMCCGRGHNILRQTRSERCHCRFHWCFCVVEECRITWVSVCK

SGPTRRRLE - GFP Tag - V

Restriction Sites: SgfI-RsrII

Cloning Scheme:



ACCN: NM_009518

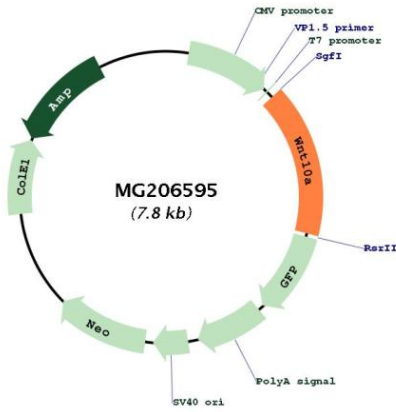
ORF Size: 1251 bp

OTI Disclaimer: Due to the inherent nature of this plasmid, standard methods to replicate additional amounts of DNA in E. coli are highly likely to result in mutations and/or rearrangements. Therefore, OriGene does not guarantee the capability to replicate this plasmid DNA. Additional amounts of DNA can be purchased from OriGene with batch-specific, full-sequence verification at a reduced cost. Please contact our customer care team at custsupport@origene.com or by calling 301.340.3188 option 3 for pricing and delivery.

The molecular sequence of this clone aligns with the gene accession number as a point of reference only. However, individual transcript sequences of the same gene can differ through naturally occurring variations (e.g. polymorphisms), each with its own valid existence. This clone is substantially in agreement with the reference, but a complete review of all prevailing variants is recommended prior to use. [More info](#)

OTI Annotation:	This clone was engineered to express the complete ORF with an expression tag. Expression varies depending on the nature of the gene.
Components:	The ORF clone is ion-exchange column purified and shipped in a 2D barcoded Matrix tube containing 10ug of transfection-ready, dried plasmid DNA (reconstitute with 100 ul of water).
Reconstitution Method:	<ol style="list-style-type: none">1. Centrifuge at 5,000xg for 5min.2. Carefully open the tube and add 100ul of sterile water to dissolve the DNA.3. Close the tube and incubate for 10 minutes at room temperature.4. Briefly vortex the tube and then do a quick spin (less than 5000xg) to concentrate the liquid at the bottom.5. Store the suspended plasmid at -20°C. The DNA is stable for at least one year from date of shipping when stored at -20°C.
RefSeq:	NM_009518.2
RefSeq Size:	2487 bp
RefSeq ORF:	1254 bp
Locus ID:	22409
UniProt ID:	P70701
Cytogenetics:	1 C4
Gene Summary:	Ligand for members of the frizzled family of seven transmembrane receptors (Probable). Functions in the canonical Wnt/beta-catenin signaling pathway. Plays a role in normal ectoderm development. Required for normal tooth development. Required for normal postnatal development and maintenance of tongue papillae and sweat ducts. Required for normal proliferation of basal cells in tongue filiform papillae, plantar epithelium and sweat ducts. Required for normal expression of keratins in tongue papillae. Required for normal expression of KRT9 in foot plant epithelium. Required for normal hair follicle function. [UniProtKB/Swiss-Prot Function]

Product images:



Circular map for MG206595