

Product datasheet for **MG206590**

Aurka (NM_011497) Mouse Tagged ORF Clone

Product data:

Product Type:	Expression Plasmids
Product Name:	Aurka (NM_011497) Mouse Tagged ORF Clone
Tag:	TurboGFP
Symbol:	Aurka
Synonyms:	AIRK1; ARK-1; Ark1; AU019385; Aurora-A; AW539821; Ayk1; IAK; IAK1; Stk6
Mammalian Cell Selection:	Neomycin
Vector:	pCMV6-AC-GFP (PS100010)
E. coli Selection:	Ampicillin (100 ug/mL)
ORF Nucleotide Sequence:	>MG206590 representing NM_011497 Red=Cloning site Blue=ORF Green=Tags(s)

TTTTGTAATACGACTCACTATAGGGCGGCCGGAATTCGTCGACTGGATCCGGTACCGAGGAGATCTGCC
GCC**CGATCGCC**

ATGGCTGTTGAGGGCGAGCCTGGATGCTGCAAACGGATAGGGAAGGCTGTGTGGCGTCGGGGTGACATGG
ACAGATGTAAGAAAAGTGTGTCTCCAGGCCTGTTAAGACCACTGTTCCCTTCGGTCCGAAACGCGTCTT
GGTACTGAGCAGATTCCATCTCAGAACCTAGGATCTGCTAGCAGTGGCCAGGCCAGCGGGTCTGTGT
CCTTCTAACTCCCAGCGTGTCCCTCACAAGCCCAGAACTTGGAGCAGGTGAGAAGCCGGCACCAAAGC
AGTTGCCAGCTGCCAGTGTTCCTCGACCTGTGTCCGGCTCAATAACCCCAGAAGAATGAGCAGCCTGC
AGCCTCCGAAATGATTCTGAAAAGGAGCAGGCATCCTTGCAAGACCGAAGACACAAAAAAGGCAG
TGGACTTTGGAAGATTTGACATTGGCCGCCACTAGGAAAAGGGAAGTTTGAAATGTCTACTTGGCGC
GGGAGAGACAAAGCAAGTTCATCCTGGCTCTGAAGGTGCTGTTTAAAACACAGCTGGAGAAGGCGAACGT
GGAGCACCAGCTTCGGAGAGAGGTGGAGATCCAGTCGCACCTGCGGCACCCCAACATCCTCAGGCTGTAT
GGCTATTTCCATGACGCCACCCGAGTTTATCTGATTCTAGAATATGCGCCCTTGGAACAGTCTATAGAG
AGCTCCAAAACCTCTCCAAGTTTGACGAGCAGAGAACAGCTACTTACATCACTGAGTTGGCAAACGCTCT
GTCTTACTGTCAATCAAAGAGAGTGATCCACAGAGACATTAAGCCAGAGAAGTACTGCTTGGCTCAAAC
GGAGAGTTGAAGATTGCAGACTTCGGGTGGTGGTGCTCCATCTTCCAGGAGAACCACAATGTGTG
GCACCCTGGACTACCTGCCCCAGAGATGATTGAAGCCGGATGCATGACGAGAAGGTGGACCTTGGAG
CCTGGGCGTTCTCTGCTATGAGTTCCTAGTGGGATGCCTCCTTTGAGGACATACGTACCAGGAGACT
TACAGAAGGATATCTCGGTTGAATCACTTTCCTGACTTTGTGACAGAGGGAGCCAGGGACCTCATT
CAAGACTGTTAAAACACAACGCAAGCCAAAGGCTAACACTAGCGGAAGTCTTGGACCCCTTGGATCAA
AGCTAATTCTTCAAACCTCCAAGTGGCCACACTAGCAAAGGCCAACCCAGCAAATCATCT

ACGGGCCGCTCGAG - GFP Tag - GTTTAA



[View online »](#)

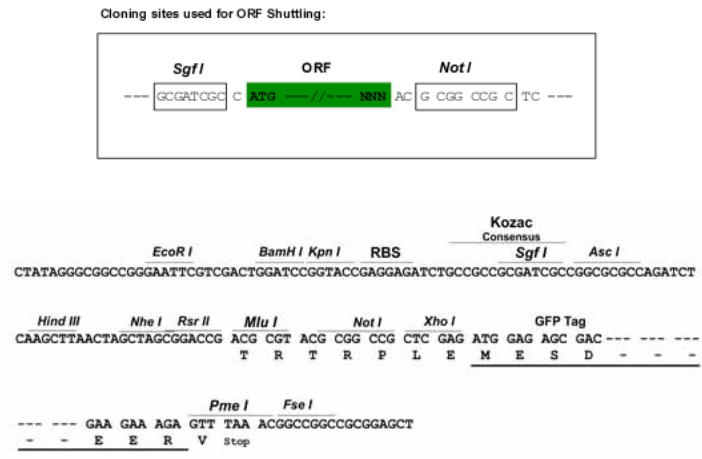
Protein Sequence: >MG206590 representing NM_011497
 Red=Cloning site Green=Tags(s)

MAVEGEPGCKKRIGKAVWRRGDMDRCKENCVSRPVKTTVPFGPKRVLVTEQIPSQLNGSASSGQAQRVLC
 PSNSQRVPSQAQKL GAGQKPAKQLPAASVPRPVSRLNPNQKNEQPAASGNDSEKEQASLQKTEDTKKRQ
 WTLEDFDIGRPLGKGFVYLLARERQSKFILALKVLFKTKLEKANVEHQLRREVEIQSHLRHPNILLRLY
 GYFHDATRVYLLILEYAPLGTVYRELQKLSKFDEQRTATYITELANALSYCHSKRVIHRDIKPENLLGSN
 GELKLIADFGWSVHAPSSRRTTMCGLDYLPPEMIEGRMHDEKVDLWLSGLVLCYEFVGMPPFEAHTYQET
 YRRISRVEFTFPDFVTEGARDLISRLLKHNASQRLTLAEVLEHPWIKANSKPPPTGHTSKEPTSKSS

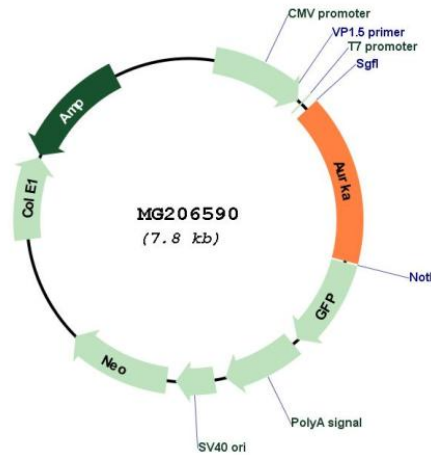
TRPLE - GFP Tag - V

Restriction Sites: SgfI-NotI

Cloning Scheme:



Plasmid Map:



ACCN: NM_011497

ORF Size:	1251 bp
OTI Disclaimer:	The molecular sequence of this clone aligns with the gene accession number as a point of reference only. However, individual transcript sequences of the same gene can differ through naturally occurring variations (e.g. polymorphisms), each with its own valid existence. This clone is substantially in agreement with the reference, but a complete review of all prevailing variants is recommended prior to use. More info
OTI Annotation:	This clone was engineered to express the complete ORF with an expression tag. Expression varies depending on the nature of the gene.
Components:	The ORF clone is ion-exchange column purified and shipped in a 2D barcoded Matrix tube containing 10ug of transfection-ready, dried plasmid DNA (reconstitute with 100 ul of water).
Reconstitution Method:	<ol style="list-style-type: none">1. Centrifuge at 5,000xg for 5min.2. Carefully open the tube and add 100ul of sterile water to dissolve the DNA.3. Close the tube and incubate for 10 minutes at room temperature.4. Briefly vortex the tube and then do a quick spin (less than 5000xg) to concentrate the liquid at the bottom.5. Store the suspended plasmid at -20°C. The DNA is stable for at least one year from date of shipping when stored at -20°C.
RefSeq:	NM_011497.2
RefSeq Size:	1905 bp
RefSeq ORF:	1254 bp
Locus ID:	20878
UniProt ID:	P97477
Cytogenetics:	2 94.84 cM
Gene Summary:	Mitotic serine/threonine kinase that contributes to the regulation of cell cycle progression. Associates with the centrosome and the spindle microtubules during mitosis and plays a critical role in various mitotic events including the establishment of mitotic spindle, centrosome duplication, centrosome separation as well as maturation, chromosomal alignment, spindle assembly checkpoint, and cytokinesis. Required for normal spindle positioning during mitosis and for the localization of NUMA1 and DCTN1 to the cell cortex during metaphase (By similarity). Required for initial activation of CDK1 at centrosomes. Phosphorylates numerous target proteins, including ARHGEF2, BORA, BRCA1, CDC25B, DLGP5, HDAC6, KIF2A, LATS2, NDEL1, PARD3, PPP1R2, PLK1, RASSF1, TACC3, p53/TP53 and TPX2. Regulates KIF2A tubulin depolymerase activity. Required for normal axon formation. Plays a role in microtubule remodeling during neurite extension. Important for microtubule formation and/or stabilization. Also acts as a key regulatory component of the p53/TP53 pathway, and particularly the checkpoint-response pathways critical for oncogenic transformation of cells, by phosphorylating and stabilizing p53/TP53. Phosphorylates its own inhibitors, the protein phosphatase type 1 (PP1) isoforms, to inhibit their activity. Necessary for proper cilia disassembly prior to mitosis.[UniProtKB/Swiss-Prot Function]