

## Product datasheet for **MG206588**

### Hat1 (NM\_026115) Mouse Tagged ORF Clone

#### Product data:

**Product Type:** Expression Plasmids  
**Product Name:** Hat1 (NM\_026115) Mouse Tagged ORF Clone  
**Tag:** TurboGFP  
**Symbol:** Hat1  
**Synonyms:** 2410071B14Rik; AA536933; Hat-1; KAT1  
**Mammalian Cell Selection:** Neomycin  
**Vector:** pCMV6-AC-GFP (PS100010)  
**E. coli Selection:** Ampicillin (100 ug/mL)  
**ORF Nucleotide Sequence:** >MG206588 representing NM\_026115  
 Red=Cloning site Blue=ORF Green=Tags(s)

TTTTGTAATACGACTCACTATAGGGCGGCCGGAATTCGTCGACTGGATCCGGTACCGAGGAGATCTGCC  
 GCC**CGATCGCC**

ATGGCGGCCCTTGGAGAAATTTCTGGTGGAGTATAAGAGTGCCGTGGAGAAGAACTAGCAGAGTACAAGT  
 GTAACACCAACACAGCAATCGAGCTGAACTAGTTCGTTTTCTGAAGATCTTGAGAATGACATTAGAAC  
 TTTCTTTCTGAATATACCCATCAGCTCTTTGGGGATGATGAACTGCTTCGGTTACAAGGCCTGAAG  
 ATCTTGCTGTACTATATTGCTGGTAGCCTGTCAACTGTTCCGTGTTGAATATTCATCTAAAGTTGATG  
 AGAACTTTGACTGTGTGGAGGCAGATGATGTTGAAGGCAAAATCAGACAAATCATTCCACCTGGGTTTTG  
 CACAAACACAAATGATTTTCTTTCTTGTGAAAAGGAACTAATTTCAAGCCTTTTGGAACCTCCTC  
 CATACATACACAGTTCCTAGTCAGACAGGAGGTGAAACCTTTACTTTCCAGATCCACAAGGCTGACATGA  
 CATGTAGAGGCTTTTCGAGAATATCATGAAAGGCTTCAGACCTTTTTGATGTGGTTTATTGAACTGCTAG  
 CTTTATTGACGTGGATGATGAAAGATGGCACTACTTTCTAGTATTTGAGAAGTATAATAAGGATGGAGCT  
 ACGCTTTTTCGACCGTAGGCTACATGACAGTCTATAATTACTATGTGTACCCAGACAAAACCCGGCCAC  
 GTGAAGTCAGATGCTGATACTGACTCCATTTCAAGGTCAGGGCCACGGTGTCAACTTCTTGAACAGT  
 TCATAGATACTACATTTTCATTTCTACAGTCTTGATATTACAGCGGAAGATCCGTCCAGAAGCTATTTG  
 AAATAAGAGACTTTGTGCTTGTGAAGTTTGTCAATTTTTCGCCAGTTTCTCCCGGAAAGATTACTG  
 AAGGATTCAGTGAAGATATGGCAATACAGGCACAGCAAAATGTTCAAATAAATAAGCAACATGCTAGAAG  
 GTTTTATGAAATTCCTCGACTGCTGGTACTGACATGAGTGTGAGCAATACAGAAGCTACAGACTG  
 GATATTAAGAAAGACTAATTAGCCCTTACAAGAAAAGCAGAGGGATCTTGCCAAGATGAAGAAATGCC  
 TGAGACCAGAAGAGCTGACAAATCAGATGAACCAGATAGAAATAAGTGTGCAGCATGAGCAGCTGGAAGA  
 GCGATTTCCAGGAGCTGGTGGAGGACTACCGCGTGTCTTGTGAGCGACTTGCTCAAGAG

ACGCGTACGCGGCCGCTCGAG - GFP Tag - GTTTAA



[View online »](#)

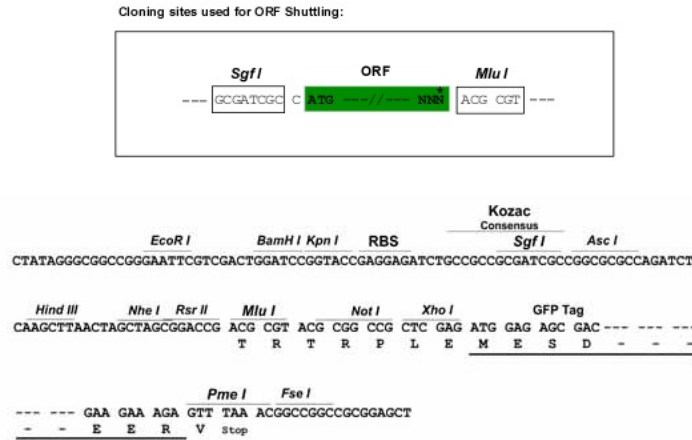
**Protein Sequence:** >MG206588 representing NM\_026115  
 Red=Cloning site Green=Tags(s)

MAALEKFLVEYKSAVEKKLAEYKCNNTNTAIELKLVRFPELLENDIRTFPEYTHQLFGDDETAFGYKGLK  
 ILLYYIAGSLSTLFRVEYSSKVDENFDCVEADDEGKIRQIIPPGFCTNTNDFLSLLEKETNFKPFGTLL  
 HTYTVPSQTGGETFTFQIHKADMTCRGFREYHERLQTFLMWFIEITASFIDVDDERWHYFLVFEKYNKDGA  
 TLFATVGYMTVYNYVYVDPKTRPRVSQMLILTPFQGGHGAQLLETVHRYYISFPTVLDITAEDPSRSL  
 KLRDFVLVKFCQFLPSFSRERLLQGFSEDMAIQAQQMFKINKQHARRVYEILRLLVTDMSDAEQYRSYRL  
 DIKRRLLISPYKKKQRD LAKMKKCLRPEELTNQMNQIEISVQHEQLEERFQELVEDYRRVIERLAQE

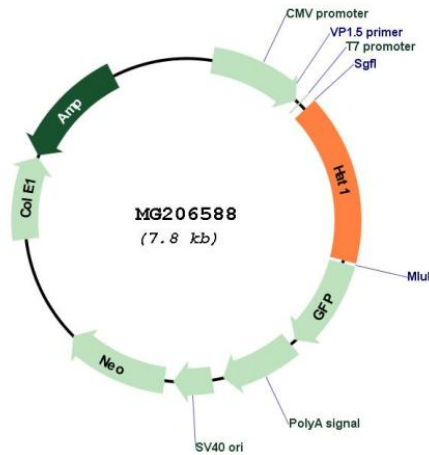
TRTRPLE - GFP Tag - V

**Restriction Sites:** SgfI-MluI

**Cloning Scheme:**



**Plasmid Map:**



**ACCN:** NM\_026115

<b>ORF Size:</b>	1248 bp
<b>OTI Disclaimer:</b>	The molecular sequence of this clone aligns with the gene accession number as a point of reference only. However, individual transcript sequences of the same gene can differ through naturally occurring variations (e.g. polymorphisms), each with its own valid existence. This clone is substantially in agreement with the reference, but a complete review of all prevailing variants is recommended prior to use. <a href="#">More info</a>
<b>OTI Annotation:</b>	This clone was engineered to express the complete ORF with an expression tag. Expression varies depending on the nature of the gene.
<b>Components:</b>	The ORF clone is ion-exchange column purified and shipped in a 2D barcoded Matrix tube containing 10ug of transfection-ready, dried plasmid DNA (reconstitute with 100 ul of water).
<b>Reconstitution Method:</b>	<ol style="list-style-type: none"><li>1. Centrifuge at 5,000xg for 5min.</li><li>2. Carefully open the tube and add 100ul of sterile water to dissolve the DNA.</li><li>3. Close the tube and incubate for 10 minutes at room temperature.</li><li>4. Briefly vortex the tube and then do a quick spin (less than 5000xg) to concentrate the liquid at the bottom.</li><li>5. Store the suspended plasmid at -20°C. The DNA is stable for at least one year from date of shipping when stored at -20°C.</li></ol>
<b>RefSeq:</b>	<a href="#">NM_026115.2</a> , <a href="#">NP_080391.2</a>
<b>RefSeq Size:</b>	1581 bp
<b>RefSeq ORF:</b>	1251 bp
<b>Locus ID:</b>	107435
<b>UniProt ID:</b>	<a href="#">Q8BY71</a>
<b>Cytogenetics:</b>	2 C2
<b>Gene Summary:</b>	Acetylates soluble but not nucleosomal histone H4 at 'Lys-5' (H4K5ac) and 'Lys-12' (H4K12ac) and, to a lesser extent, acetylates histone H2A at 'Lys-5' (H2AK5ac). Has intrinsic substrate specificity that modifies lysine in recognition sequence GXGKXG. May be involved in nucleosome assembly during DNA replication and repair as part of the histone H3.1 and H3.3 complexes.[UniProtKB/Swiss-Prot Function]