

## Product datasheet for **MG206578**

### Slc2a9 (NM\_145559) Mouse Tagged ORF Clone

#### Product data:

Product Type:	Expression Plasmids
Product Name:	Slc2a9 (NM_145559) Mouse Tagged ORF Clone
Tag:	TurboGFP
Symbol:	Slc2a9
Synonyms:	Glut9; SLC2a9A; SLC2A9B
Mammalian Cell Selection:	Neomycin
Vector:	pCMV6-AC-GFP (PS100010)
E. coli Selection:	Ampicillin (100 ug/mL)
ORF Nucleotide Sequence:	>MG206578 representing NM_145559 Red=Cloning site Blue=ORF Green=Tags(s)

TTTTGTAATACGACTCACTATAGGGCGGCCGGAATTCGTCGACTGGATCCGGTACCGAGGAGATCTGCC  
GCC**CGCATCGCC**

ATGAAGCTCAGTGAAAAGAACTCCGCAGAAACCAAGGAAAGCCAGCGGAAATGGTCCTTCTCGCTCGTCG  
TGGCAGCTCTCGTGGGAGCCTTCGGGTCTCCTCCTACGGGTACAACCTCTCCGTGGTGAACGCGCC  
CACGCCGTATATCAAGGCCTTTACAATGGAACCTGGTACAGGAGGCATGGACAGCCATTGACCCGGAT  
ACCCTGACTCTGCTCTGGTCTGTGACTGTGCCATATTTGCGATTGGTGGCCTGGTGGGAACGCTGATGG  
TGAAGATGATTGAAAAGTTTCTTGGGAGGAAGTCCACATTGCTGGTCAACAATGGATTTGCCATTTCCGC  
AGCGTTGCTGATGGCATGCTCACTCCGGCAGGAACCTTTGAGATGCTCATTGTGGGACGGTTCATCATG  
GGTGTGGATGGAGGCATTGCACTCAGCGCGCTCCCATGTATCTCAACGAGATCTCACCCAAGGAGATCC  
GGGGCTCTCTGGGCCAGGTGACTGCCATCTTCACTGCATTGGCGTGTCTTCTGGACAGTTGCTGGGCCCT  
GCCGGAGCTGCTGGGAAGGATCTGGTCTACACCAACAGCATCTTTGGGAAAGCTGGGATCCCTCAGGAC  
AAGATCCCATACATCACCTGAGCACGGGAGGAATTGAAACACTGGTGTCTTCTCTGGCTTGGTCA  
TTGAGCGCTTAGGAAGGAGACCTCTCCTCATTGGTGGCTTCGGGTGATGGCCCTCTTCTTTGGGACCT  
CACCGCGACACTGACCTGCAGGACCAAGCTCCCTGGGTCCCTACCTCAGCATTGTGTGCATCTTGGCC  
ATCATTGCCTCGTCTGCAGCGGTCCAGGTGGGATCCATTATCCTGACCGGAGAGTTCTCCAACAGT  
CAGAGCGACCGGACGCTTCATGATCGCAGGCACAGTCAACTGGCTCTCAAACCTCGCCGTAGGGCTCCT  
TTTCCCTTTCATCCAGAAAAGCCTGGACTCCTACTGCTTCTCCTCGTCTTCGCCACAATATGTATCGCAGGT  
GCTACCTACTTCTATTTTGTCTCCCGGAGACCAAGAACAAGGAGGATGAGGAGGATGAGGAGGAGGAGGAGG  
CCAAGAGGAACAAGGCTCAGCCCCAGAGGTGAAGGCTGATTGAGCCATGACTGAGGAGAAGGCCAACAG  
CCAGACTGAGCCCGATTTCATCCTCCAGCTGGACAGCTATGGCCAAAACAAAATTGTC

**ACGCGT**ACGCGGCCGCTCGAG - GFP Tag - GTTTAA



[View online >](#)

**Protein Sequence:** >MG206578 representing NM\_145559  
Red=Cloning site Green=Tags(s)

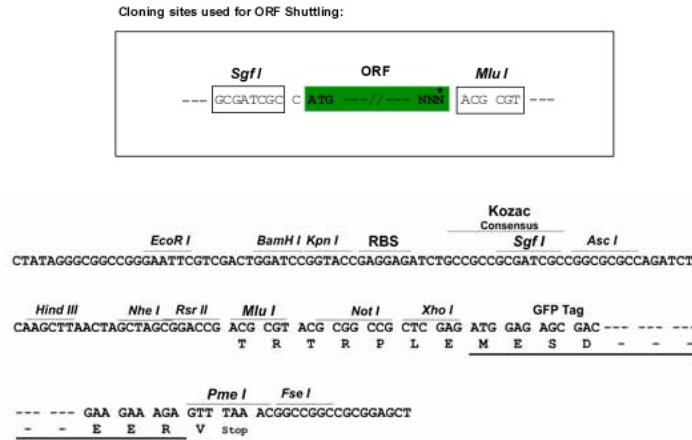
MKLSEKNSAETKESQRKWSFSLVVAALVGAFGSSFLYGYNLSVVNAPTPYIKAFYNGTWYRRHGQPIDPD  
 TLTLWSVTVSIFAIGGLVGTLMVKMIGKFLGRKSTLLVNNGFATSAALLMACSLRAGTFEMLIVGRFIM  
 GVDGGIALSALPMYLNESPKAIRGSLGQVTAIFICIGVFSGQLLGLPELLGRIWFYTNISIFGKAGIPQD  
 KIPYITLSTGGIETLAAIFSGLVIERLRGRRLIIGGFLMALFFGTLTATLTLQDQAPWVWVYLSIVCILA  
 IIASFCSPGGIPFILTGEFFQQSERPAAFMIAGTVNWLNSFAVGLLFPFIQKSLDSYCFLVFATICIAI  
 ATYFYFVLPETKNRTHAEISQAFAKRNKAQPPEVKADSAMTEEKANSQTEPDSSSTLDSYGQNKIV

TRTRPLE - GFP Tag - V

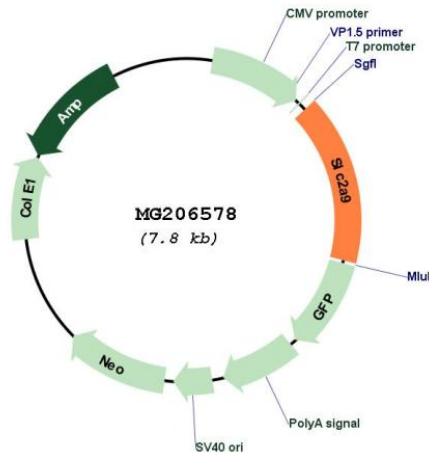
**Restriction Sites:**

SgfI-MluI

**Cloning Scheme:**



**Plasmid Map:**



**ACCN:**

NM\_145559

<b>ORF Size:</b>	1248 bp
<b>OTI Disclaimer:</b>	The molecular sequence of this clone aligns with the gene accession number as a point of reference only. However, individual transcript sequences of the same gene can differ through naturally occurring variations (e.g. polymorphisms), each with its own valid existence. This clone is substantially in agreement with the reference, but a complete review of all prevailing variants is recommended prior to use. <a href="#">More info</a>
<b>OTI Annotation:</b>	This clone was engineered to express the complete ORF with an expression tag. Expression varies depending on the nature of the gene.
<b>Components:</b>	The ORF clone is ion-exchange column purified and shipped in a 2D barcoded Matrix tube containing 10ug of transfection-ready, dried plasmid DNA (reconstitute with 100 ul of water).
<b>Reconstitution Method:</b>	<ol style="list-style-type: none"><li>1. Centrifuge at 5,000xg for 5min.</li><li>2. Carefully open the tube and add 100ul of sterile water to dissolve the DNA.</li><li>3. Close the tube and incubate for 10 minutes at room temperature.</li><li>4. Briefly vortex the tube and then do a quick spin (less than 5000xg) to concentrate the liquid at the bottom.</li><li>5. Store the suspended plasmid at -20°C. The DNA is stable for at least one year from date of shipping when stored at -20°C.</li></ol>
<b>RefSeq:</b>	<a href="#">NM_145559.2</a> , <a href="#">NP_663534.1</a>
<b>RefSeq Size:</b>	3243 bp
<b>RefSeq ORF:</b>	1251 bp
<b>Locus ID:</b>	117591
<b>UniProt ID:</b>	<a href="#">Q3T9X0</a>
<b>Cytogenetics:</b>	5 B3
<b>Gene Summary:</b>	Urate transporter, which may play a role in the urate reabsorption by proximal tubules (PubMed:19587147, PubMed:25100214). Does not transport glucose, fructose or galactose (By similarity).[UniProtKB/Swiss-Prot Function]