

Product datasheet for **MG206570**

Preb (NM_016703) Mouse Tagged ORF Clone

Product data:

Product Type:	Expression Plasmids
Product Name:	Preb (NM_016703) Mouse Tagged ORF Clone
Tag:	TurboGFP
Symbol:	Preb
Synonyms:	C85705
Mammalian Cell Selection:	Neomycin
Vector:	pCMV6-AC-GFP (PS100010)
E. coli Selection:	Ampicillin (100 ug/mL)
ORF Nucleotide Sequence:	>MG206570 representing NM_016703 Red=Cloning site Blue=ORF Green=Tags(s)

TTTTGTAATACGACTCACTATAGGGCGGCCGGAATTCGTCGACTGGATCCGGTACCGAGGAGATCTGCC
GCC**CGATCGCC**

ATGGGTCGGCGCCGGGTGTGGAGCTGTACCGGGCCCGTCCCGTTGTACGCGCTTCGGATAGACCCCA
AGACTGGGCTGCTCATCGCTGCGGGCGGAGGAGGAGCTGCCAAGACCGGCATAAAGAATGGCGTGCATTT
TCTGCAGCTAGAGCTGATCAACGGGTGCCTGAGCGCTTCCTTGTGCACTCTCATGACACGGAGACACGG
GCCACCATGAATTTGGCGCTTGTGGTACATTCTTGTGCCGGACAGGATGCCAGTGCAGCTTCTTC
GTTTCCAGGTCCATCAACAGAAGGGCAGTAAAGCGGAGAAGTCAAGTTCACCCCGAAGGGGTTGAACTCAA
GAGAAAGGGGGCTCCTCCAGCAGAGAAGAAATCGGGAGCACAAAGTTCACCCCGAAGGGGTTGAACTCAA
GTAAGAATTTGGAGGCAGTACAGACAGACTTCAGCAATGAACCGCTGCAGAAAGTTGTGTGCTTCAACC
ATGATAACACCCTGCTTGCCACTGGAGGAAGTGTGGTCAATGTTTCGTGTCTGGAAGGTACCTAGCCTGGA
GAAAGTTCTGGAGTTCAAAGCCCATGAAGGGGAGATTGGAGATTTGACTTTGGGTCCTGATGGCAAGCTG
GTTACAGTGGGCTGGGACTTTAAGGCCTCTGTGTGGCAGAAGGATCAACTGGTGCACAGCTACAGTGGC
AAGAGAATGGACCAGCCTCTTCTAATACACCATAACCGCTACCAGGCCTGCAGGTTTGGGCAGGTTCCAGA
TCAGCTCGGTGGGCTGCGACTTTCACAGTGCAGATACCCACAAGCGCCTACGTACGCCCCACCCTGC
TACCTCACAGCCTGGGACAGTTCACCTTCTTGCCTCTTCGGACCAGATCCTGTGGCCATGAGGTCATTT
CCTGCCTCAGTGTCAAGTTCGGGTACCTTCTAGGCCTAGGCACGGTCACTGGCTCTGTGCGCCATCTA
CATAGCTTTCTCTCCAGCGCCTGTATTATGTGAAGGAGGCCCATGGCATTGTGGTAACAGATGTGACC
TTTCTACCTGAGAAGGGTTGTGGTCAAAGCTCCTTGGGCCCATGAAACTGCTCTTTTCTGTGGCTG
TGGATAGTCGTTGCCAGTTGCACCTGCTGCCTTACGGCGGAGTGTTCCTGTATGGCTTCTGCTCCTGCT
GTGTGTCGGCCTTATTATTGTGACCATCCTGCTGCTCCAGACTGCCTTCCGGGATTTCTC

ACGGTACGGCGCCGCTCGAG - GFP Tag - GTTTAA



[View online >](#)

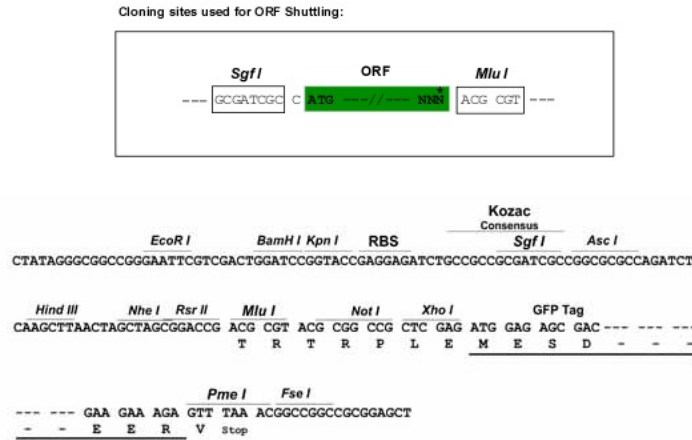
Protein Sequence: >MG206570 representing NM_016703
 Red=Cloning site Green=Tags(s)

MGRRRGVELYRAPFPLYALRIDPKTGLLIAAGGGGAAKTGIKNGVHFLQLELINGCLSASLLHSHDTETR
 ATMNLALAGDILAAGQDAQCLLRQVHQKGSKAEKSGSKEQGPRQRKGAPPAEKKSGAQVHPEGVELK
 VKNLEAVQTDFSNEPLQKVVCFNHDNTLLATGGTDGHRVWVKVPSLEKVFKAHEGEIGDLTLGPDGKL
 VTVGWDFKASVWQKQDLVTQLWQENGPASSNTPYRYQACRFQVDPDQLGGLRFLTVQIPHKRLRQPPC
 YLTAWDSSTFLPLRTRSCGHEVISCLSVSDSGTFLGLGTVTGSVAIYIAFSLQRLYYVKEAHGIVVTDVT
 FLPEKGGPKLLGPHETALFSVAVDSRCQLHLLPSRRSVPWLLLLLVCVGLIIVTILLLLQTAFPGFL

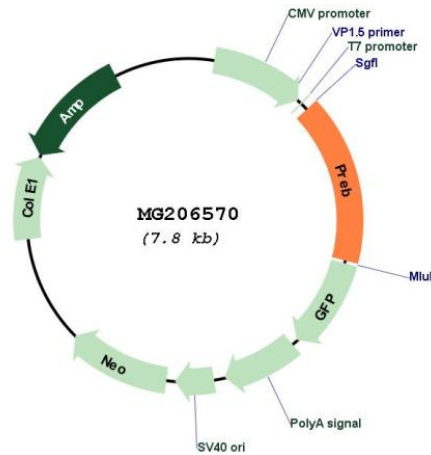
TRTRPLE - GFP Tag - V

Restriction Sites: SgfI-MluI

Cloning Scheme:



Plasmid Map:



ACCN: NM_016703

ORF Size:	1248 bp
OTI Disclaimer:	The molecular sequence of this clone aligns with the gene accession number as a point of reference only. However, individual transcript sequences of the same gene can differ through naturally occurring variations (e.g. polymorphisms), each with its own valid existence. This clone is substantially in agreement with the reference, but a complete review of all prevailing variants is recommended prior to use. More info
OTI Annotation:	This clone was engineered to express the complete ORF with an expression tag. Expression varies depending on the nature of the gene.
Components:	The ORF clone is ion-exchange column purified and shipped in a 2D barcoded Matrix tube containing 10ug of transfection-ready, dried plasmid DNA (reconstitute with 100 ul of water).
Reconstitution Method:	<ol style="list-style-type: none">1. Centrifuge at 5,000xg for 5min.2. Carefully open the tube and add 100ul of sterile water to dissolve the DNA.3. Close the tube and incubate for 10 minutes at room temperature.4. Briefly vortex the tube and then do a quick spin (less than 5000xg) to concentrate the liquid at the bottom.5. Store the suspended plasmid at -20°C. The DNA is stable for at least one year from date of shipping when stored at -20°C.
RefSeq:	NM_016703.3
RefSeq Size:	1998 bp
RefSeq ORF:	1254 bp
Locus ID:	50907
UniProt ID:	Q9WUQ2
Cytogenetics:	5 B1
Gene Summary:	Guanine nucleotide exchange factor that specifically activates the small GTPase SAR1B. Mediates the recruitment of SAR1B and other COPII coat components to endoplasmic reticulum membranes and is therefore required for the formation of COPII transport vesicles from the ER.[UniProtKB/Swiss-Prot Function]