

## Product datasheet for **MG206551**

### Vegfc (NM\_009506) Mouse Tagged ORF Clone

#### Product data:

**Product Type:** Expression Plasmids  
**Product Name:** Vegfc (NM\_009506) Mouse Tagged ORF Clone  
**Tag:** TurboGFP  
**Symbol:** Vegfc  
**Synonyms:** AW228853; VEGF-C  
**Mammalian Cell Selection:** Neomycin  
**Vector:** pCMV6-AC-GFP (PS100010)  
**E. coli Selection:** Ampicillin (100 ug/mL)  
**Protein Sequence:** >MG206551 representing NM\_009506

Red=Cloning site Green=Tags(s)

```
MHLLCFLSLACSLAAALIPSPREAPATVAAFESGLGFSEAEPDGGEVKAFEGKDLEEQLRSVSSVDELM
SVLYPDYWKMYKCQLRKGGWQQPTLNTRTGDSVKFAAAHYNTEILKSIDNEWKTKQMPREVCIDVGKEF
GAATNTFFKPPCVSVYRCGGCCNSEGLQCMNTSTGYLSKTLFEITVPLSQGPKPVTISFANHTSCRCMSK
LDVYRQVHSIIRSLPATLPQCQAANKTCPTNYVWNNYMCRCCLAQQDFIFYSNVEDDSTNGFHDVCGPNK
ELDEDTQCQCVCKGGLRPSSCGPHKELDRDSCQCVCKNKLFPNSCGANREFDENTCQCVCKRTCPRNQPLN
PGKCACECTENTQKCFKLGKKFHHQTCSYRRPCANRLKHCDPGLSFSEEVCRCVPSYWKRPHLN
```

TRTRPLE - GFP Tag - V

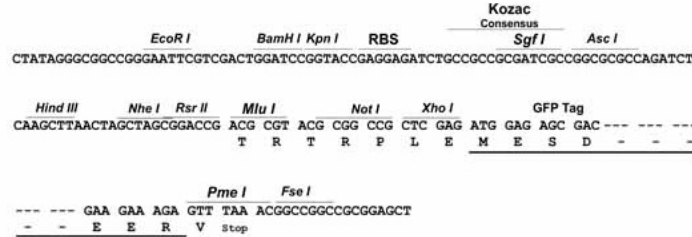
**Restriction Sites:** Sgfl-Mlul



[View online »](#)

**Cloning Scheme:**

Cloning sites used for ORF Shutting:


**ACCN:** NM\_009506

**ORF Size:** 1245 bp

**OTI Disclaimer:** The molecular sequence of this clone aligns with the gene accession number as a point of reference only. However, individual transcript sequences of the same gene can differ through naturally occurring variations (e.g. polymorphisms), each with its own valid existence. This clone is substantially in agreement with the reference, but a complete review of all prevailing variants is recommended prior to use. [More info](#)
**OTI Annotation:** This clone was engineered to express the complete ORF with an expression tag. Expression varies depending on the nature of the gene.

**Components:** The ORF clone is ion-exchange column purified and shipped in a 2D barcoded Matrix tube containing 10ug of transfection-ready, dried plasmid DNA (reconstitute with 100 ul of water).

**Reconstitution Method:**

1. Centrifuge at 5,000xg for 5min.
2. Carefully open the tube and add 100ul of sterile water to dissolve the DNA.
3. Close the tube and incubate for 10 minutes at room temperature.
4. Briefly vortex the tube and then do a quick spin (less than 5000xg) to concentrate the liquid at the bottom.
5. Store the suspended plasmid at -20°C. The DNA is stable for at least one year from date of shipping when stored at -20°C.

**RefSeq:** [NM\\_009506.2](#), [NP\\_033532.1](#)

**RefSeq Size:** 1881 bp

**RefSeq ORF:** 1248 bp

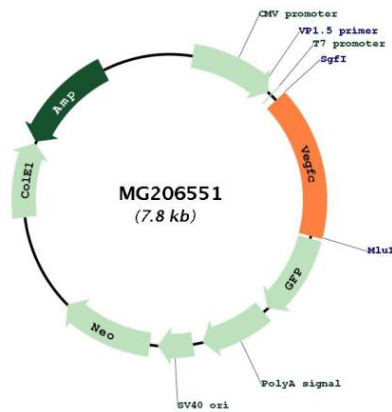
**Locus ID:** 22341

**UniProt ID:** [P97953](#)

**Cytogenetics:** 8 B1.3

**Gene Summary:** Growth factor active in angiogenesis, and endothelial cell growth, stimulating their proliferation and migration and also has effects on the permeability of blood vessels. May function in angiogenesis of the venous and lymphatic vascular systems during embryogenesis, and also in the maintenance of differentiated lymphatic endothelium in adults. Binds and activates KDR/VEGFR2 and FLT4/VEGFR3 receptors.[UniProtKB/Swiss-Prot Function]

### Product images:



Circular map for MG206551