

Product datasheet for **MG206487**

Bmp8a (BC052168) Mouse Tagged ORF Clone

Product data:

Product Type:	Expression Plasmids
Product Name:	Bmp8a (BC052168) Mouse Tagged ORF Clone
Tag:	TurboGFP
Symbol:	Bmp8a
Synonyms:	OP2, OP-2
Mammalian Cell Selection:	Neomycin
Vector:	pCMV6-AC-GFP (PS100010)
E. coli Selection:	Ampicillin (100 ug/mL)
ORF Nucleotide Sequence:	>MG206487 representing BC052168 Red=Cloning site Blue=ORF Green=Tags(s)

TTTTGTAATACGACTCACTATAGGGCGGCCGGAATTCGTCGACTGGATCCGGTACCGAGGAGATCTGCC
GCC**CGATCGCC**

ATGGCTATGCGTCCCGGGCCACTCTGGCTATTGGCCTTGCTCTGTGCGCGCTGGGAGGCGGCCACGGTC
CGCGTCCCCCGCACACCTGTCCCCAGCGTCGCTGGGAGCGCGAGCGCCGCGACATGCAGCGTAAAT
CCTGGCGGTGCTCGGGCTACCGGACGGCCCCGACCCCGTGCACAACCCGCGCTGCCCGGACGCCAGCG
TCCGCGCCCTCTTCATGTTGGACCTATACCACGCCATGACCGATGACGACGACGGCGGGCCACCACAGG
CTCACTTAGGCCGTGCCGACCTGGTCATGAGCTTCGTCAACATGGTGGAACGCGACCGTACCCTGGGCTA
CCAGGAGCCACACTGGAAGGAATTCACCTTTGACCTAACCCAGATCCCTGCTGGGAGGCTGTACAGCT
GCTGAGTTCGGATCTACAAAGAACCAGCACCCACCCGCTCAACACAACCCCTCCACATCAGCATGTTTCG
AAGTGGTCCAAGAGCACTCCAACAGGGAGTCTGACTTGTCTTTTTGGATCTTCAGACGCTCCGATCTGG
GGACGAGGGCTGGCTGGTGGACATCACAGCAGCCAGTGACCGATGGCTGCTGAACCATCACAAAGGAC
CTGGGACTCCGCCTCTATGTGAAACCGCGGATGGGCACAGCATGGATCCTGGCTGGCTGGTCTGCTTG
GACGACAAGCACCACGCTCCAGACAGCCTTTTCATGGTAACCTTCTTCAGGGCCAGCCAGAGTCTGTGCG
GGCCCCTCGGGACGCGAGACCACTGAAGAGGAGGACGCAAAGAAAACGAACGAGCTTCCGACCCCAAC
AAACTCCAGGGATCTTTGATGATGGCCACGGTCCCAGGAGAGGTTTCCCGCAGGCATGAGCTCT
ACGTGAGCTTCCGTGACCTTGGCTGGCTGGACTGGGTCAATCGCCCCAGGGCTACTCTGCCTATTACTG
TGAGGGGGAGTGTGCTTTCCCACTGGACTCCTGTATGAACGCCACCAACCATGCCATCTTGCAGTCTCTG
GTCAGTACCACAGTAGCCTGCTGCGACAGGTGGAGCGGGTGCACCTGATGAAGCCAGATGTTGTCCCA
AGGCATGCTGTGCACCCACAACTGAGTGCCACCTCTGTGCTGTACTATGACAGCAGCAACAATGTCAT
CCTGCGTAAACACCGTAACATGGTGGTCAAGGCCTGTGGCTGCCAC

ACGCGTACGCGGCCGCTCGAG - GFP Tag - GTTTAA



[View online >](#)

Protein Sequence: >MG206487 representing BC052168
 Red=Cloning site Green=Tags(s)

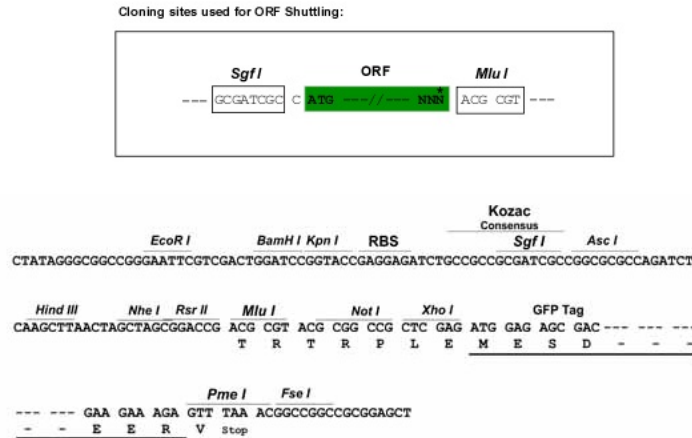
MAMRPGPLWLLGLALCALGGGHGPRPPHTCPQRRLGARERRDMQREILAVLGLPGRPRPRAQPAARQPA
 SAPLFMLDLYHAMTDDDDGGPPQAHLAGRADLVMSFVNMVERDRTLGYQEPHWKEFHFDLTQIPAGEAVTA
 AEFRIYKEPSTHPLNTTLHISMFEVVQEHNSRESDLFFLDLQTLRSGDEGWLVDLITAASDRWLLNHHKD
 LGLRLYVETADGHSMDPGLAGLLGRQAPRSRQPFMVTFFRASQSPVRAPRAARPLKRRQPKKTNELPHPN
 KLPGIFDDGHGSRGREVCRRHELIVSFRDLGWLDWVIAPQGYSAYYCEGECAPFLDSCMNATNHAILQSL
 VSTTVACCDRWSGVHLMKPDVVPKACCAPTKLSATSVLYYDSSNNVILRKHNMVVKACGCCH

TRTRPLE - GFP Tag - V

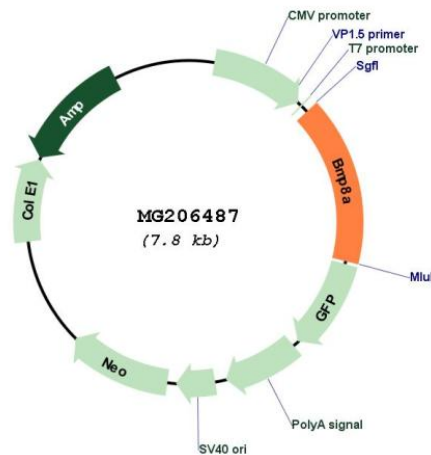
Restriction Sites:

Sgfl-MluI

Cloning Scheme:



Plasmid Map:



ACCN:

BC052168

ORF Size:	1238 bp
OTI Disclaimer:	The molecular sequence of this clone aligns with the gene accession number as a point of reference only. However, individual transcript sequences of the same gene can differ through naturally occurring variations (e.g. polymorphisms), each with its own valid existence. This clone is substantially in agreement with the reference, but a complete review of all prevailing variants is recommended prior to use. More info
OTI Annotation:	This clone was engineered to express the complete ORF with an expression tag. Expression varies depending on the nature of the gene.
Components:	The ORF clone is ion-exchange column purified and shipped in a 2D barcoded Matrix tube containing 10ug of transfection-ready, dried plasmid DNA (reconstitute with 100 ul of water).
Reconstitution Method:	<ol style="list-style-type: none">1. Centrifuge at 5,000xg for 5min.2. Carefully open the tube and add 100ul of sterile water to dissolve the DNA.3. Close the tube and incubate for 10 minutes at room temperature.4. Briefly vortex the tube and then do a quick spin (less than 5000xg) to concentrate the liquid at the bottom.5. Store the suspended plasmid at -20°C. The DNA is stable for at least one year from date of shipping when stored at -20°C.
RefSeq:	BC052168 , AAH52168
RefSeq Size:	2412 bp
RefSeq ORF:	1238 bp
Locus ID:	12163
Cytogenetics:	4 57.42 cM
Gene Summary:	This gene encodes a secreted ligand of the TGF-beta (transforming growth factor-beta) superfamily of proteins. Ligands of this family bind various TGF-beta receptors leading to recruitment and activation of SMAD family transcription factors that regulate gene expression. The encoded preproprotein is proteolytically processed to generate each subunit of the disulfide-linked homodimer. This protein may play a role in development of the reproductive system. Mice lacking a functional copy of this gene exhibit degeneration of germ cells and the epididymal epithelium. This gene may have arose from a gene duplication event and its gene duplicate is also present on chromosome 4. [provided by RefSeq, Jul 2016]