

## Product datasheet for **MG206446**

### E2f4 (NM\_148952) Mouse Tagged ORF Clone

#### Product data:

Product Type:	Expression Plasmids
Product Name:	E2f4 (NM_148952) Mouse Tagged ORF Clone
Tag:	TurboGFP
Symbol:	E2f4
Synonyms:	2010111M04Rik; A1427446
Mammalian Cell Selection:	Neomycin
Vector:	pCMV6-AC-GFP (PS100010)
E. coli Selection:	Ampicillin (100 ug/mL)
ORF Nucleotide Sequence:	>MG206446 representing NM_148952 Red=Cloning site Blue=ORF Green=Tags(s)

TTTTGTAATACGACTCACTATAGGGCGGCCGGGAATTCGTCGACTGGATCCGGTACCGAGGAGATCTGCC  
GCC**CGATCGCC**

ATGGCGGAGGCCGGCCACAGGCGCCGCCCGGGGACTCCAAGCCGGCAGCAGAGAAGAGTCTGGGAC  
TTCTCACCACCAAGTTCGTGTCGCTCTTGCAGGAAGCCAAGGACGGCGTGCTTGACCTCAAGCTGGCAGC  
CGACACTTTGCTGTGCGCCAGAAACGGCGGATCTACGACATACCAACGTGCTGGAAGGCATCGGTCTG  
ATCGAAGAAGAAATCCAAGAACAGCATCCAGTGGAAAGGCGTCCGACCAGGTTGCAATACCGGGAGATCG  
CTGACAAGCTGATTGAGCTCAAGGCAGAGATCGAGGAGCTGCAGCAACGAGAGCAAGAAGTGGACCAGCA  
CAAGGTGTGGGTGCAGCAGAGCATCCGGAATGTCACTGAGGACGTCCAGAACAGCTGCTTGCCTACGTG  
ACTCATGAAGACATCTGCAGATGCTTTGCTGGAGATACCCCTCCTTGCCATCCGGGCGCCATCGGGCACCA  
GTCTAGAGGTGCCATCCAGAGGGTCTCAATGGCCAGAAGAAGTACCAGATTCACTTAAAGAGCATGAG  
TGGGCCTATCGAGGTGCTGCTAGTGAACAAGGAGGCGCTGGAGTTCACCACCTGTGGCTGTGCCTGTCCCT  
CCCCCTGACGATCTACTCCAGAGTCCACCTGCTGTTTCTACACCTCCACCTTGCCCAAGCTGCCTTAG  
CTCAACCCCAAGAATCCTCTCCTCCAAGCAGCCCCAGCTAACTACCCCACTCCTGTCTTGGCAGCAC  
TCAAGTCTCAGAGGTGGCATGCCAGACATCTGAGATTGCAGTGAAGTGGTACGCCCTGGAAGTGAAGAACAAG  
GACAGTGGTGAAGTCACTCCCCTGAGGCTGACAGCACTGGACACTCGGCCTCTGCAGTCCCTCTG  
CACTGCTGGATAGTAGTAGCAGCAGCAGCAGCAGCAGCAGTAGCAGCAGCAGCAGTTCATCTGGAACCAA  
CCCTTCTACCTCCTTTGAGCCCATCAAAGCAGACCCACAGGCGTTCTGGATCTCCCAAAGAGCTGTCA  
GAAATCTTCGACCCACGAGAGAGTGCATGAGCTCCGAGCTGCTGGAAGAAGTGTGCTTCAGAAGTGT  
TTGCCCCCTCCTCCGACTTTCTCCACCTCCCGGAGACCAGATTACATCTACAACCTGGACGAGAGCGA  
AGGTGTCTGTGATCTCTTTGATGTTCTCTCAAATC

**ACGCGT**ACGCGGCCGCTCGAG - GFP Tag - GTTTAA



[View online »](#)

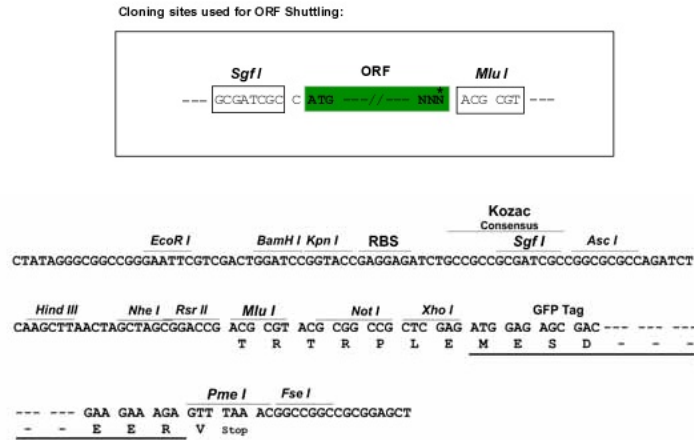
**Protein Sequence:** >MG206446 representing NM\_148952  
Red=Cloning site Green=Tags(s)

MAEAGPQAPPPPGTPSRHEKSLGLLTTKFVSLLEAKDGVLDLKLAAADTLAVRQKRRIYDITNVLEIGL  
 IEKKSNSIQWKGVGPNCNREIADKLIELKAEIEELQQREQELDQHKVWVQQSIRNVTEVDVQNSCLAYV  
 THEDICRCFAGDTLLAIRAPSGTSLEVPIPEGLNGQKQYQIHLKSMGP IEVLLVNKEAWSPPVAVPVP  
 PPDDLLQSPPAVSTPPPLPKPALAQPQESSPPSSPQLTTPVPLGSTQVSEVACQTSIEIIVSGSPGTENK  
 DSGEVSSLPGLTALDTRPLQSSALLDSSSSSSSSSSSSSSSSSSSSSSSSSTNPSTSFEPKADPTGVLDPKELS  
 EIFDPTRECMSELLEELMSSEVFAPLLRLLSPPPGDHDYIYNLDESEGVCDLFDVPVLKL

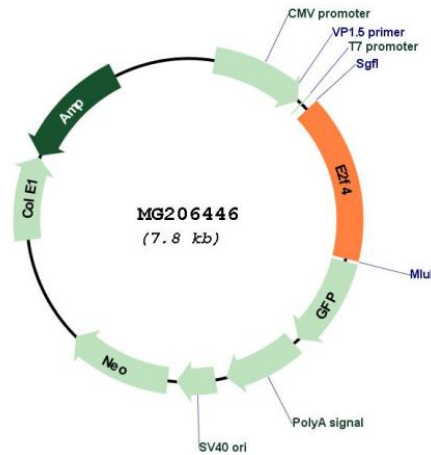
TRTRPLE - GFP Tag - V

**Restriction Sites:** SgfI-MluI

**Cloning Scheme:**



**Plasmid Map:**



**ACCN:** NM\_148952

<b>ORF Size:</b>	1230 bp
<b>OTI Disclaimer:</b>	The molecular sequence of this clone aligns with the gene accession number as a point of reference only. However, individual transcript sequences of the same gene can differ through naturally occurring variations (e.g. polymorphisms), each with its own valid existence. This clone is substantially in agreement with the reference, but a complete review of all prevailing variants is recommended prior to use. <a href="#">More info</a>
<b>OTI Annotation:</b>	This clone was engineered to express the complete ORF with an expression tag. Expression varies depending on the nature of the gene.
<b>Components:</b>	The ORF clone is ion-exchange column purified and shipped in a 2D barcoded Matrix tube containing 10ug of transfection-ready, dried plasmid DNA (reconstitute with 100 ul of water).
<b>Reconstitution Method:</b>	<ol style="list-style-type: none"><li>1. Centrifuge at 5,000xg for 5min.</li><li>2. Carefully open the tube and add 100ul of sterile water to dissolve the DNA.</li><li>3. Close the tube and incubate for 10 minutes at room temperature.</li><li>4. Briefly vortex the tube and then do a quick spin (less than 5000xg) to concentrate the liquid at the bottom.</li><li>5. Store the suspended plasmid at -20°C. The DNA is stable for at least one year from date of shipping when stored at -20°C.</li></ol>
<b>RefSeq:</b>	<a href="#">NM_148952.1</a> , <a href="#">NP_683754.1</a>
<b>RefSeq Size:</b>	2024 bp
<b>RefSeq ORF:</b>	1233 bp
<b>Locus ID:</b>	104394
<b>UniProt ID:</b>	<a href="#">Q8R0K9</a>
<b>Cytogenetics:</b>	8 D3
<b>Gene Summary:</b>	Transcription activator that binds DNA cooperatively with DP proteins through the E2 recognition site, 5'-TTTC[CG]CGC-3' found in the promoter region of a number of genes whose products are involved in cell cycle regulation or in DNA replication. The DRTF1/E2F complex functions in the control of cell-cycle progression from G1 to S phase. E2F4 binds with high affinity to RBL1 and RBL2. In some instances can also bind RB1. Specifically required for multiciliate cell differentiation: together with MCIDAS and E2F5, binds and activate genes required for centriole biogenesis.[UniProtKB/Swiss-Prot Function]