

Product datasheet for **MG206427**

Cdc42ep1 (NM_027219) Mouse Tagged ORF Clone

Product data:

Product Type:	Expression Plasmids
Product Name:	Cdc42ep1 (NM_027219) Mouse Tagged ORF Clone
Tag:	TurboGFP
Symbol:	Cdc42ep1
Synonyms:	1810058K22Rik; AA980734; Borg5; CEP1; MSE55
Mammalian Cell Selection:	Neomycin
Vector:	pCMV6-AC-GFP (PS100010)
E. coli Selection:	Ampicillin (100 ug/mL)
ORF Nucleotide Sequence:	>MG206427 representing NM_027219 Red=Cloning site Blue=ORF Green=Tags(s)

TTTTGTAATACGACTCACTATAGGGCGGCCGGAATTCGTCGACTGGATCCGGTACCGAGGAGATCTGCC
GCC**CGATCGCC**

ATGCCCGTCCCCAGGGGGCACAGGAGCCCCACCATGAGCCTGGGCAAGCTGTCTCCTGTGGGATGGG
TGTCCAGTCCCATGGAAAGAGACGCCTGACAGCAGACATGATCAGCCCCCACTTGGGGACTCCGCCA
CACCATGCACGTAGGCCGTGGTGGGATGTCTTCGGAGATACGTCCTTCTCAGCAACCACGGAGCCGC
TCTGAAACACCCACCGCTCACCCGAAGTTTCTGGCCAGGAAGCTCCAACAGGTTCCGAGAGTCGGGG
TGCCACCTCGAAGGATGGCTTCCCGGCTGCACCATCACCTGCTCCGCTCCCATCTCGCCATCATCAA
GAACGCCATCTCCCTGCCTCAGCTCAACCAGGCCACCTATGACAGTCTGGTGATGGGCAAGCTTAGTTTT
GACAGCACGCCGGCTAGCTCCACAGATGGCCACTCTGGTTACGGCCTGGAGTCTGGCTTCTGTACCATCT
CACGCCTGCCACGCGTGGAAAAGCACAGCAACCGTGACCGTGACCGTGACCCGGACCATTCTCAAGACCG
AGAGCAAAGTTCTTTCCCTCTGAGCCTACCCCTAACCCTGAGCTCCGACGCTCTGACTCTCTTTGTCC
TTCCGTTTTGACCTTGACCTTGGGCCCTCACTCCTCAGTGAGCTGCTAGGGGTATGAGCCTTTCAGAAG
CTCCAGCTGTGAACTCCAGTCCCTACTGCCAACCCCTGCTCCTGCAGAAACCCTGCCCTACTGC
AAAACCCAGCCCATGCGATAACCCTAGATGCTGTGACAAGCCTCCAGCCTCTGCTGTGACAAGC
CTTCCAGCCCTGCGGCGCAAGCTCCCCATCCCGTGGACATTTCCCAATGGGGTAACCTCTGTGTTGG
GCCCTGCGGCTGAGGCAAAGCCAGTCCCTGTGGGAGAGGGTCCCCAGGTACCCTCCAACATGACCTTTGA
CAGGCATGGAGCCAGCTGGGGGGCCAGCCGGGCCAGCTGGGGGGCCAGCCGGGCCAGCCGCCACTACACT
GAGATGGATGCCCGGGGAGCTGGCAGGGGTGTACCCCAAGTTCATGGCTCCTGGGAGAGTCTGAATG
AAGACTGGAGCACGCCTCCAGCCAGTGTGAGGGCTCCTGTGCCACCTCGGTGCAGGTCAATGCCTTTGA
GTTTGCTGATGCTGAGGAAGATGACGAGGTCAAGGTG

AGCGGACCGACGCGTACGCGGCCGCTCGAG - GFP Tag - GTTTAA



[View online »](#)

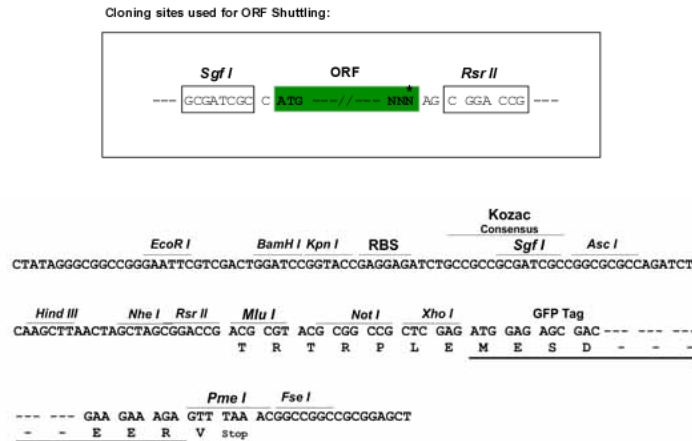
Protein Sequence: >MG206427 representing NM_027219
 Red=Cloning site Green=Tags(s)

MPGPQGGTGAPTMSLGLKSPVGVWSSSHGKRRLTADMISPPLGDFRHTMHVGRGGDVFGDTSFLSNHGGR
 SGNTHRSRPSFLARKLQVRRVGVPPRRMASPAAPSPAPPPISPIIKNAISLPQLNQATYDSLVMGKLSF
 DSTPASSTDGHSYGLESGFCTISRLPRVEKHSNRDRDRDPDHSQDREQSSFPSEPTPNPELRRSDLLS
 FRFDLDLGPSSLSELLGVMSLSEAPAAETPVPTANPPAPANPAPTAKPPAHAITLDAVTSLPASAVTS
 LPAPAAAASSPRGHFPNGVTSVLGPAAEAKPSPVGEQPVSNMTFDRHGASWGASRASWGASRASRHYT
 EMDARRELAGVLPQVHGSWESLNEDWSTPPASVRAPVPTSVQVNAFEFADAEEDEVKV

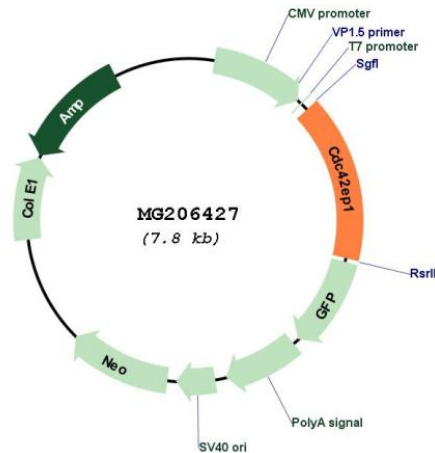
SGPTRRRLE - GFP Tag - V

Restriction Sites: SgfI-RsrII

Cloning Scheme:



Plasmid Map:



ACCN: NM_027219

ORF Size:	1227 bp
OTI Disclaimer:	The molecular sequence of this clone aligns with the gene accession number as a point of reference only. However, individual transcript sequences of the same gene can differ through naturally occurring variations (e.g. polymorphisms), each with its own valid existence. This clone is substantially in agreement with the reference, but a complete review of all prevailing variants is recommended prior to use. More info
OTI Annotation:	This clone was engineered to express the complete ORF with an expression tag. Expression varies depending on the nature of the gene.
Components:	The ORF clone is ion-exchange column purified and shipped in a 2D barcoded Matrix tube containing 10ug of transfection-ready, dried plasmid DNA (reconstitute with 100 ul of water).
Reconstitution Method:	<ol style="list-style-type: none">1. Centrifuge at 5,000xg for 5min.2. Carefully open the tube and add 100ul of sterile water to dissolve the DNA.3. Close the tube and incubate for 10 minutes at room temperature.4. Briefly vortex the tube and then do a quick spin (less than 5000xg) to concentrate the liquid at the bottom.5. Store the suspended plasmid at -20°C. The DNA is stable for at least one year from date of shipping when stored at -20°C.
RefSeq:	NM_027219.1 , NP_081495.1
RefSeq Size:	2543 bp
RefSeq ORF:	1230 bp
Locus ID:	104445
UniProt ID:	Q91W92
Cytogenetics:	15 E1
Gene Summary:	Probably involved in the organization of the actin cytoskeleton. Induced membrane extensions in fibroblasts (By similarity).[UniProtKB/Swiss-Prot Function]