

Product datasheet for **MG206420**

Rexo4 (BC060147) Mouse Tagged ORF Clone

Product data:

Product Type:	Expression Plasmids
Product Name:	Rexo4 (BC060147) Mouse Tagged ORF Clone
Tag:	TurboGFP
Symbol:	Rexo4
Synonyms:	Gm111; Rex4; Xpnc2h
Mammalian Cell Selection:	Neomycin
Vector:	pCMV6-AC-GFP (PS100010)
E. coli Selection:	Ampicillin (100 ug/mL)
ORF Nucleotide Sequence:	>MG206420 representing BC060147 Red=Cloning site Blue=ORF Green=Tags(s)

TTTTGTAATACGACTCACTATAGGGCGCCGGGAATTCGTCGACTGGATCCGGTACCGAGGAGATCTGCC
GCC**CGATCGCC**

ATGAAGACGAAGGCCACCGCGCCGGTGCCCAACCTGGGCTATCAGGAAGCTCGCTAGGAAGAAAGCCA
AGAAGAAGTTCAGGAAGAGCAAAGCTCTGGCAGGAAGTGGTGTCCGGGAAGCCACCCGGCGCTGTGGC
AGGCCGACCGCCGAAGGCCCCGAGAATTTCTCAAAATTTGGAAGGCGTTGCAAGAGCTACTGAAACAA
AAGTCACAGGCCGAGAAAAACCTTTGTCTCTCAGATGGATGACAAAATGCACCCCAAATAATCCAGC
AGAACAGAAAAAGGCCTCAGATAAATCAAAGGGAGACAAGCAGAGGACAGAAAAGGCCAAGAGCACTAG
GGTTCTGTTACATCTGCACCTACGGACAGGAAGATACTAGTACCTCCACAGATACCTCTGGAACAGAG
CAGAAGAAAGGAGCCAAGAAGAGGACATATAGTGACATCTTCTCATCAAGGGGCTCTCAAGCCTAAGT
GGAAAGCTACGGAGGCAGCTGTTATCTTGAATCAGCCACGCCCACTGAGGAAGACATCTGGTTTGTGA
TGTGGATCCAGATGATATTGAGGATGCCATAGGCCAGAGGCAGCCATGCTGGTACGGAAGAGGCTGGGG
CAGAAGAAGAGGACCATCTCCCTGGAGAAGGAACAAGCCTTTGGCGGCTTGACAAAAGCCTTGGCCCTGG
ATTGTGAGATGGTAGGCGTGGGTCCAAAGGGGAAGAGAGCATCGCAGCCCGTGTGTCGATCGTGAACCA
GTATGGGAAGTGTGTTTATGACAAGTACGTCAAGCCAAGTACTGAGCCAGTACTGACTACAGGACAGCCGTC
AGTGGGATCCGGCTGAGAACCCTGAAGCAGGGAGAAGAGTTTGAAGTTGTGAAGAAGGAAGTGGCAGAAA
TGTTGAAGGGCAGAAATCCTGGTGGGCATGCGCTACACAATGATTTAAAGGTTTTGTTCTTGACCATCC
AAAAAAGAAAATCAGGGACACTCAGAAATTCAAACCATTCAGGAGTTCGAGTAAAGAGTGGACGACGCTCT
CTGAAACGGCTTTCTGAGAAAATTCGGGGATCAGGGTCCAACAGGCCGAGCACTGCTCAATCCAGGATG
CCCAGGCAGCAATGAGGCTTTACGTCAATGGTGAACGGGAATGGGAGAGCAGTACTGCAAACCGCGCTGC
CCCAGCTGCCACTCCACAGCACCGCATCAAGAATCT

ACGCGTACGCGGCCGCTCGAG - GFP Tag - GTTTAA



[View online »](#)

Protein Sequence: >MG206420 representing BC060147
 Red=Cloning site Green=Tags(s)

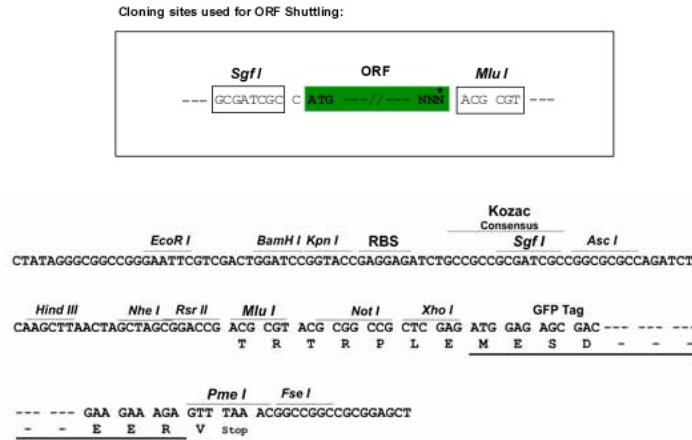
MKTKATAPVPPQGPPIRKLARKKAKKKFRKSKALAGSGVPGSHPAAVAGRPPKAPENFSQNWKALQELLKQ
 KSQAAEKPLVSQMDDKMHPQIIQQNRKKASDKSKGDKQRTEKAKSTRGSVTSAPTDRKILVPPTDTSGETE
 QKKGAKKRTYSDISSHQGALKPKWKATEAAVILNQPTTEEDIWFDDVDPDDIEDAIGPEAAMLVRKRLG
 QKKRTISLEKEQAFGGLTKALALDCEMVGVPKGEESIAARVSIVNQYGKCVYDKYVKPTEPVTDYRTAV
 SGIRPENLKQGEFEVVKKEVAEMLKGRILVGHALHNDLKVFLDHPKKKIRDTQKFKPFRSRVKSGRPS
 LKRLSEKILGIRVQQAEHCSIQDAQAAMRLYVMVKREWESSTANRRAPAATPQHRIKNS

TRTRPLE - GFP Tag - V

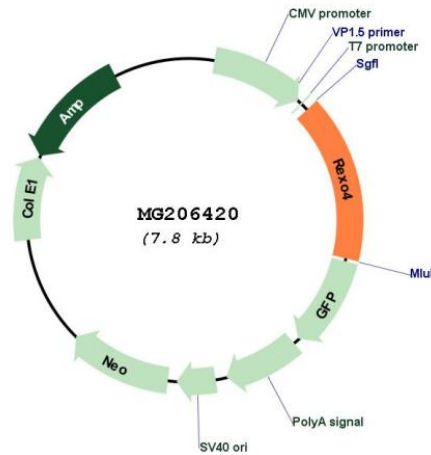
Restriction Sites:

SgfI-MluI

Cloning Scheme:



Plasmid Map:



ACCN:

BC060147

ORF Size:	1227 bp
OTI Disclaimer:	The molecular sequence of this clone aligns with the gene accession number as a point of reference only. However, individual transcript sequences of the same gene can differ through naturally occurring variations (e.g. polymorphisms), each with its own valid existence. This clone is substantially in agreement with the reference, but a complete review of all prevailing variants is recommended prior to use. More info
OTI Annotation:	This clone was engineered to express the complete ORF with an expression tag. Expression varies depending on the nature of the gene.
Components:	The ORF clone is ion-exchange column purified and shipped in a 2D barcoded Matrix tube containing 10ug of transfection-ready, dried plasmid DNA (reconstitute with 100 ul of water).
Reconstitution Method:	<ol style="list-style-type: none">1. Centrifuge at 5,000xg for 5min.2. Carefully open the tube and add 100ul of sterile water to dissolve the DNA.3. Close the tube and incubate for 10 minutes at room temperature.4. Briefly vortex the tube and then do a quick spin (less than 5000xg) to concentrate the liquid at the bottom.5. Store the suspended plasmid at -20°C. The DNA is stable for at least one year from date of shipping when stored at -20°C.
RefSeq:	BC060147.1
RefSeq Size:	2280 bp
RefSeq ORF:	1229 bp
Locus ID:	227656
Cytogenetics:	2 A3
Gene Summary:	May function as an exonuclease.[UniProtKB/Swiss-Prot Function]