

Product datasheet for **MG206329**

Rad9b (NM_144912) Mouse Tagged ORF Clone

Product data:

Product Type:	Expression Plasmids
Product Name:	Rad9b (NM_144912) Mouse Tagged ORF Clone
Tag:	TurboGFP
Symbol:	Rad9b
Synonyms:	A630082N15Rik; BC021784
Mammalian Cell Selection:	Neomycin
Vector:	pCMV6-AC-GFP (PS100010)
E. coli Selection:	Ampicillin (100 ug/mL)
ORF Nucleotide Sequence:	>MG206329 representing NM_144912 Red=Cloning site Blue=ORF Green=Tags(s)

TTTTGTAATACGACTCACTATAGGGCGGCCGGAATTCGTCGACTGGATCCGGTACCGAGGAGATCTGCC
GCC**CGATCGCC**

ATGCTGAAGTGCGGGATGACGGGCGCCAGGTGAAAGTATTTGGGAAAGCAGTACAAACGCTATCACGAG
TGAGCGATGAGCTGTGGCTAGACCCATCCGAGAAAGTCTTGCTCTGAGATCTGTGAATCTTGTCAATC
CACGATGGCTACGTCTGTTTTTCATCTATGTTTTTCAACATTATCAGTGGTACCCTTTGCCACGATG
AGTGATACTGACTTACCCTGAATTTAAATTGCAAATTTGGCAATAAAGTCAGTTCTGCCAATCTTTAGAT
GTCTGAATTACCTTGAAGAAGTGTGGAGAAGTGCACAGTAGTCGCCAGAGCGGATAAATGCAGAGTCGT
CATTCAAGTCTTCGGCAAGCATGGTATTTAAAGAACTCACAATGTGTATTTCCAAGACAGCCAGCCCTTG
AAAATTATCTTCGAAAAGAGTCTGTGTGCGAATATCCTGATGATTAACCAAGACTGCTGACTGAGGCCA
TTGCTCTTCTGACATCAAATCAAGAGGAAGTCACTTCTCTGTTACTCCAGGGAACCTTTTGCCTCAAGAG
TTTGAGTGGGGAATTGCTGGATTGACCAGCTCTGTGTACAGTGAGATGTCTTTTGGCCCGGAAGAGTTT
GACTTCTTTCAGGTTGGACTTGATACCGAGATAACATTTTGTCTTAAAGAACTGAAGGGGATCCTCACCT
TCTCAGAAGTGTGCACGCACCTTAGCCATCTACTTTGACTTTCCTGGAAAACCGGTTGTTTTGAGTGT
TGAAGACATGCTCTTGAAGCAAACCTTTATCTTGGCCAGTATAGTGGATTATCCGAGTAGAACATCTTCA
CCACAGTTACTGCCCTTTCCAGGCACGAAGTACACCCCATACAGTCCAGTGCCTCCGAGGATAAAA
GCAGAGTCAGTCAGACCCAGAGAGCATCTCTCGAGCAGCGCCAAAAGACTATTTCCCAAGGATTCTCC
TGACAGCAGCTCTGCAGCTGAAACCAAGAGAGCCAGCGCCGCGCCAGGATGACATCTTGAAGTGCCTGAA
AGTGTGTTAGTACATGGAGGAAGAGCGGAGCCCTTACACCTCAGGAAGTTTTCTGCATGTTCTTTG
GAGCTGTATCTTGTGAACAGCAAGAGTATGCCGGCCACCCTTGGACAGCCTGGCAGTAGCAAGCGACAG
TGAGGAGGACGTGAGTGGC

ACGCGTACGCGGCCGCTCGAG - GFP Tag - GTTTAA



[View online >](#)

Protein Sequence: >MG206329 representing NM_144912
 Red=Cloning site Green=Tags(s)

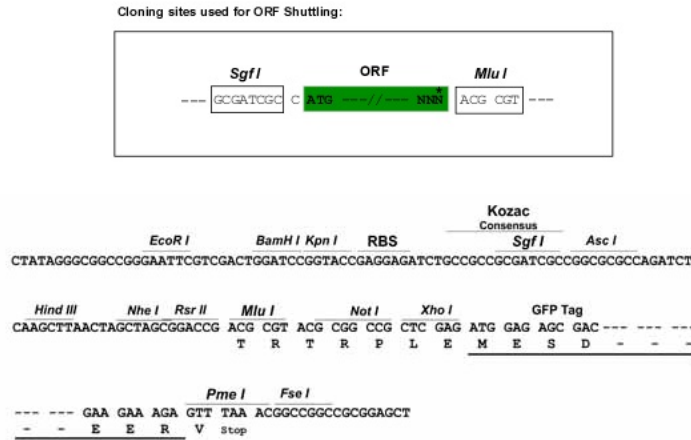
MLKCGMTGGQVKVFGKAVQTL SRVSDDELWLDPSEKGLALRSVNSCHSTYGYVLFSSMFFQHYQWSPFATM
 SDTDLPLNLNCKLAIKSVLP IFRCLNLYLERSVEKCTTVARADKCRVVIQFFGKHGKIRTHNVYFQDSQPL
 KIIIFEKSLCANILMIKPRLLTEAIALLTSNQEIVTF SVTPGNFCLKSLSGELLDLTSSVYSEMSFGPEEF
 DFFQVGLDTEITFCFKELKGILTFSEVMHAPLAIYDFDPGKPVVLSVEDMLLEANFILATLVDYPSRTSS
 PQLLLPSQARRSHPIQSSAPEDKSRVSQTPESISRAAPKRLFPKSPDSSSAAETKRASAGQDDIFEVPE
 SVVSDMEEERSPSHLRKFSCMFFGAVSCEQQEYAGHPLDSLAVASDSEEDVSG

TRTRPLE - GFP Tag - V

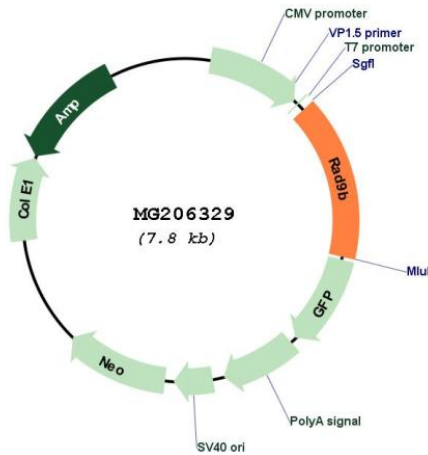
Restriction Sites:

SgfI-MluI

Cloning Scheme:



Plasmid Map:



ACCN:

NM_144912

ORF Size:	1209 bp
OTI Disclaimer:	The molecular sequence of this clone aligns with the gene accession number as a point of reference only. However, individual transcript sequences of the same gene can differ through naturally occurring variations (e.g. polymorphisms), each with its own valid existence. This clone is substantially in agreement with the reference, but a complete review of all prevailing variants is recommended prior to use. More info
OTI Annotation:	This clone was engineered to express the complete ORF with an expression tag. Expression varies depending on the nature of the gene.
Components:	The ORF clone is ion-exchange column purified and shipped in a 2D barcoded Matrix tube containing 10ug of transfection-ready, dried plasmid DNA (reconstitute with 100 ul of water).
Reconstitution Method:	<ol style="list-style-type: none">1. Centrifuge at 5,000xg for 5min.2. Carefully open the tube and add 100ul of sterile water to dissolve the DNA.3. Close the tube and incubate for 10 minutes at room temperature.4. Briefly vortex the tube and then do a quick spin (less than 5000xg) to concentrate the liquid at the bottom.5. Store the suspended plasmid at -20°C. The DNA is stable for at least one year from date of shipping when stored at -20°C.
RefSeq:	NM_144912.4
RefSeq Size:	1593 bp
RefSeq ORF:	1212 bp
Locus ID:	231724
UniProt ID:	Q6WBX7
Cytogenetics:	5 F