

Product datasheet for **MG206321**

Pten (NM_008960) Mouse Tagged ORF Clone

Product data:

Product Type:	Expression Plasmids
Product Name:	Pten (NM_008960) Mouse Tagged ORF Clone
Tag:	TurboGFP
Symbol:	Pten
Synonyms:	2310035O07Rik; A130070J02Rik; AI463227; B430203M17Rik; MMAC; MMAC1; PTENbeta; TEP; TEP1
Mammalian Cell Selection:	Neomycin
Vector:	pCMV6-AC-GFP (PS100010)
E. coli Selection:	Ampicillin (100 ug/mL)



[View online »](#)

ORF Nucleotide Sequence:

>MG206321 representing NM_008960
 Red=Cloning site Blue=ORF Green=Tags(s)

TTTTGTAATACGACTCACTATAGGGCGGCCGGAATTCGTCGACTGGATCCGGTACCGAGGAGATCTGCC
 GCC**CGGATCGCC**

ATGACAGCCATCATCAAAGAGATCGTTAGCAGAAACAAAAGGAGATATCAAGAGGATGGATTCGACTTAG
 ACTTGACCTATATTTATCCAAATATTATTGCTATGGGATTTCTGCAGAAAGACTTGAAGGTGTATACAG
 GAACAATATTGATGATGTAGTAAGGTTTTGGATTCAAAGCATAAAAACCATTACAAGATATACAATCTA
 TGTGCTGAGAGACATTATGACACCGCCAAATTTAACTGCAGAGTTGCACAGTATCCTTTTGAAGACCATA
 ACCCACCACAGCTAGAATTATCAAACCCTTCTGTGAAGATCTTGACCAATGGCTAAGTGAAGATGACAA
 TCATGTTGCAGCAATCACTGTAAGCTGGAAAGGGACGGACTGGTGAATGATTTGTGCATATTTATTG
 CATCGGGCAAATTTTTAAAGGCACAAGAGGCCCTAGATTTTTATGGGGAAGTAAGGACCAGAGACAAAA
 AGGGAGTCACAATCCCAGTCAGAGGCGCTATGTATATTATTAGCTACCTGCTAAAAAATCACCTGGA
 TTACAGACCCGTGGCACTGCTGTTTACAAGATGATGTTTGAAGTATTCCAATGTTGAGTGGCGGAACT
 TGCATCCTCAGTTTGTGGTCTGCCAGCTAAAGGTGAAGATATATTCCTCCAATTCAGGACCCACGCGGC
 GGGAGGACAAGTTCATGTACTTTGAGTTCCTCAGCCATTGCCTGTGTGGTGTATCAAAGTAGAGTT
 CTTCCACAAAACAGAAAGATGCTCAAAAAGGACAAAAATGTTTCACTTTTGGGTAATACGTTCTTCATA
 CCAGGACCAGAGGAAACCTCAGAAAAAGTGAAAAATGGAAGTCTTTGTGATCAGGAAATCGATAGCATT
 GCAGTATAGAGCGTGCAGATAATGACAAGGAGTATCTTGTACTCACCTAACAAAAAACGATCTTGACAA
 AGCAAAACAAAGACAAGGCCAACCGATACTTCTCTCAAATTTTAAAGGTGAAACTATACTTTACAAAAACA
 GTAGAGGAGCCATCAAATCCAGAGGCTAGCAGTTCAACTTCTGTGACTCCAGATGTTAGTGACAATGAAC
 CTGATCATTATAGATATTCTGACACCACTGACTCTGATCCAGAGAATGAACCTTTTGATGAAGATCAGCA
 TTCACAAATTACAAAAGTC

ACGCGTACGCGGCCGCTCGAG - GFP Tag - GTTTAA

Protein Sequence:

>MG206321 representing NM_008960
 Red=Cloning site Green=Tags(s)

MTAIIKEIVSRNKRRYQEDGFDLDTYIYPNIIAMGFPAERLEGVYRNNIDDVVRFLDSKHKNHYKIYNL
 CAERHYDTAKFNCRVAQYPFEDHNPPQLELIKPFCELDQWLEDDNHVAAIHCKAGKGRGVMICAYLL
 HRGKFLKAQEALDFYGEVRTRDKKGVTTIPSQRRYVYYSYLLKNHLDYRPVALLFHKMMFETIPMFSGGT
 CNPQFVVCQLKVKIYSSNSGPTREDKFMYFEPQPLPVCGLIKVEFFHKQNKMLKDKMFHFWNTFFI
 PGPEETSEKVENGLCDQEIDSICSIERADNDKEYLVLTLTKNDLKDANKDKANRYFSPNFVKVLYFTKT
 VEEPSNPEASSSTSVTPDVSDNEPDHYRSDTTDSDPENEPFDEDQHSQITKV

TRTRPLE - GFP Tag - V

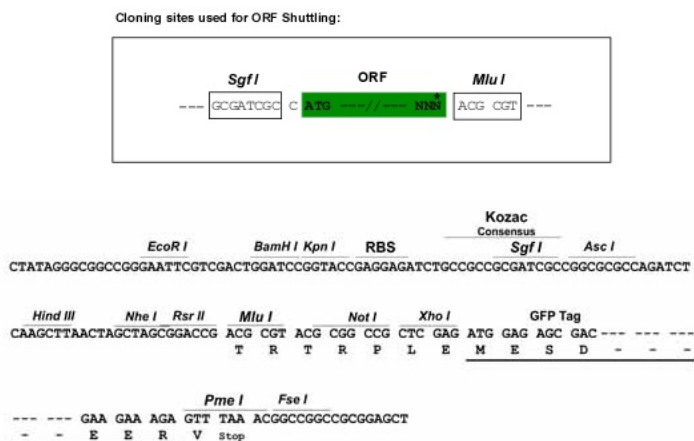
Chromatograms:

https://cdn.origene.com/chromatograms/ja1817_f01.zip

Restriction Sites:

Sgfl-Mlul

Cloning Scheme:



ACCN: NM_008960

ORF Size: 1209 bp

OTI Disclaimer: Due to the inherent nature of this plasmid, standard methods to replicate additional amounts of DNA in E. coli are highly likely to result in mutations and/or rearrangements. Therefore, OriGene does not guarantee the capability to replicate this plasmid DNA. Additional amounts of DNA can be purchased from OriGene with batch-specific, full-sequence verification at a reduced cost. Please contact our customer care team at custsupport@origene.com or by calling 301.340.3188 option 3 for pricing and delivery.

The molecular sequence of this clone aligns with the gene accession number as a point of reference only. However, individual transcript sequences of the same gene can differ through naturally occurring variations (e.g. polymorphisms), each with its own valid existence. This clone is substantially in agreement with the reference, but a complete review of all prevailing variants is recommended prior to use. [More info](#)

OTI Annotation: This clone was engineered to express the complete ORF with an expression tag. Expression varies depending on the nature of the gene.

Components: The ORF clone is ion-exchange column purified and shipped in a 2D barcoded Matrix tube containing 10ug of transfection-ready, dried plasmid DNA (reconstitute with 100 ul of water).

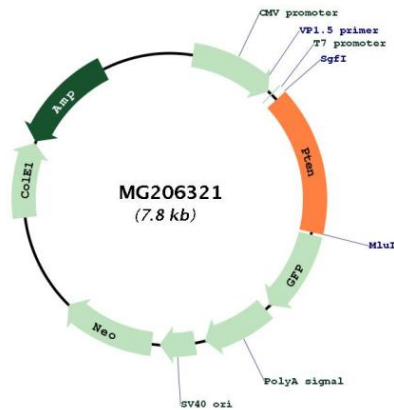
Reconstitution Method:

1. Centrifuge at 5,000xg for 5min.
2. Carefully open the tube and add 100ul of sterile water to dissolve the DNA.
3. Close the tube and incubate for 10 minutes at room temperature.
4. Briefly vortex the tube and then do a quick spin (less than 5000xg) to concentrate the liquid at the bottom.
5. Store the suspended plasmid at -20°C. The DNA is stable for at least one year from date of shipping when stored at -20°C.

RefSeq: [NM_008960.2, NP_032986.1](#)
 RefSeq Size: 8229 bp
 RefSeq ORF: 1212 bp
 Locus ID: 19211
 UniProt ID: [O08586](#)
 Cytogenetics: 19 28.14 cM

Gene Summary: This gene encodes a phosphatase with dual activity against phospholipids and proteins, and acts as a tumor-suppressor. The protein contains four structural domains, a PIP2-binding domain, a catalytic tensin-type phosphatase domain, a C2 tensin-type domain and a PDZ-binding domain. The protein belongs to the protein tyrosine phosphatase family. Deletion of this gene in mice contribute to tumorigenesis in multiple tissues. [provided by RefSeq, Sep 2015]

Product images:



Circular map for MG206321