

Product datasheet for **MG206240**

Acat2 (NM_009338) Mouse Tagged ORF Clone

Product data:

Product Type: Expression Plasmids
Product Name: Acat2 (NM_009338) Mouse Tagged ORF Clone
Tag: TurboGFP
Symbol: Acat2
Synonyms: AW742799; Tcp-1x; Tcp1-rs1
Mammalian Cell Selection: Neomycin
Vector: pCMV6-AC-GFP (PS100010)
E. coli Selection: Ampicillin (100 ug/mL)
ORF Nucleotide Sequence: >MG206240 representing NM_009338
Red=Cloning site Blue=ORF Green=Tags(s)

TTTTGTAATACGACTCACTATAGGGCGGCCGGAATTCGTCGACTGGATCCGGTACCGAGGAGATCTGCC
GCC**CGATCGCC**

ATGAATGCGGGCTCAGACCCCGTGGTCATCGTCTCAGCGGCGGCACCGCTATAGGCTCCTCAATGGTG
CCCTGTCCACCGTGCCTGTCCACGAGATGGGGACAAGTGTATCAAGAAGTCTGCAGAGGGCCAAAGT
GGCTCCAGAAGAGGTGTCCGAGGTCATATTTGGACATGTCTTGACGGCAGGTTGTGGCAGAATCCTACT
CGACAAGCCAGTGTGGTGCAGGGATCCCTATTCGGTCCAGCATGGAGCTGCCAGATGATCTGTGGCT
CGGGCCTAAAAGCCGTGTCTTGCAGCCAGTCCATAGCCATGGGCGACTCCACCATTGTGGTAGCTGG
AGGCATGGAGAATATGAGCAAGGCTCCTCACTGACTCACCTGAGAACAGGAGTCAAGGATGGGTGAGGTG
CCACTGGCTGACAGCATACTCTGTGATGGTCTGACAGATGCCTTTCACACTACCACATGGGCATCACAG
CTGAAAACGTAGCCAAAAATGGCAAGTGAAGCAGAGAGGCCAGGACAAGGTTGCAGTCTGTCCACAGAA
CAGGGCAGAGCATGCTCAGAAAGCTGGCCACTTTGACAAGGAGATTGTGCCAGTGTGGTGTCTCCAGA
AAAGGTCTTACTGAAGTAAAAATCGATGAATTTCCCGTCATGGGAGTAACTTGAAGCCATGGGCAAGC
TGAAACCTTACTTTCTTACTGATGGGACAGGAAGTGTACCCAGCGAACGCATCAGGAATGAACGATGG
CGCTGCTGCTGTGGTCTTATGAAGAAGACAGAAGCTGAGAGGCGGATGCTGAAACCTTTAGCAAGAATA
GTCTCTGGTCCCAAGCCGGTGTGGAGCCTTCTGTTATGGGAGTAGGACCAATCCAGCCATAAAGCAAG
CTGTTGCAAAGGCAAGGCTGGTCCCTGGAGGATGTTGACCTGTTTGAATCAATGAAGCCTTTGCAGCGGT
GTCTGCGCAATAGCTAAAGAACTTGGATTAACCCCGAGAAGGTCAACATCGATGGAGGAGCCATTGCC
TTGGGCCATCCTCTGGGAGCATCTGGTGCAGGATTCTAGTGACCTTGCTGCACACCCTGGAGAGAGTGG
GCGGGACCCGTGGTGTTCAGCCCTGTGCATTGGGGTGGGATGGGAGTCGCAATGTGTGTTAGAGAGG
G

ACGGTACGCGGCCGCTCGAG - GFP Tag - GTTTAA



[View online »](#)

Protein Sequence: >MG206240 representing NM_009338
 Red=Cloning site Green=Tags(s)

MNAGSDPVVIVSAARTAIGSFNGALSTVPVHEMGTTVIKEVLQRAKVAPEEVSEVIFGHVLTAGCGQNPT
 RQASVGGAGIPYSVPAWSCQMICGSLKAVCLAAQSIAMGDSTIVVAGGMENMSKAPHLTHLRTGVRMGEV
 PLADSI LCDGLTDAFHNYHMGIT AENVAKKWQVSREAQDKVAVLSQNRAEHAQKAGHF DKEIVPVLVSSR
 KGLTEVKIDEFFRHSNLEAMGKLPYFLTDGTGTVTPANASGMNDGAAAVVLMKKTEAERRMLKPLARI
 VWSQAGVEPSVMGVGPIPAIKQAVAKAGWSLEDVDLFEINEFAAVSAAIAKELGLNPEKVNIDGGAIA
 LGHPLGASGRILVTLHLTERVGGTRGVAALCI GGGMGVAMCVQRG

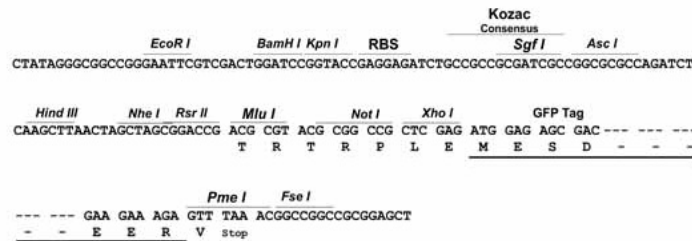
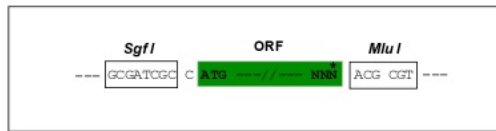
TRTRPLE - GFP Tag - V

Restriction Sites:

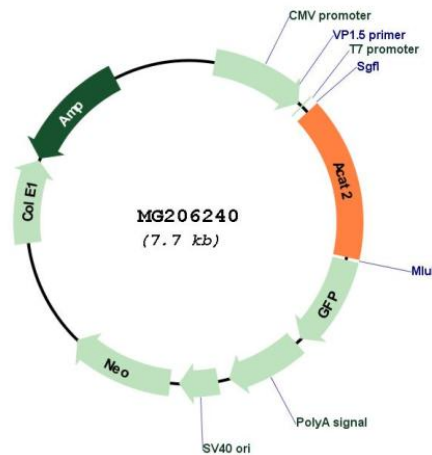
SgfI-MluI

Cloning Scheme:

Cloning sites used for ORF Shuttling:



Plasmid Map:



ACCN:

NM_009338

ORF Size:	1191 bp
OTI Disclaimer:	The molecular sequence of this clone aligns with the gene accession number as a point of reference only. However, individual transcript sequences of the same gene can differ through naturally occurring variations (e.g. polymorphisms), each with its own valid existence. This clone is substantially in agreement with the reference, but a complete review of all prevailing variants is recommended prior to use. More info
OTI Annotation:	This clone was engineered to express the complete ORF with an expression tag. Expression varies depending on the nature of the gene.
Components:	The ORF clone is ion-exchange column purified and shipped in a 2D barcoded Matrix tube containing 10ug of transfection-ready, dried plasmid DNA (reconstitute with 100 ul of water).
Reconstitution Method:	<ol style="list-style-type: none">1. Centrifuge at 5,000xg for 5min.2. Carefully open the tube and add 100ul of sterile water to dissolve the DNA.3. Close the tube and incubate for 10 minutes at room temperature.4. Briefly vortex the tube and then do a quick spin (less than 5000xg) to concentrate the liquid at the bottom.5. Store the suspended plasmid at -20°C. The DNA is stable for at least one year from date of shipping when stored at -20°C.
RefSeq:	NM_009338.1 , NP_033364.1
RefSeq Size:	2215 bp
RefSeq ORF:	1194 bp
Locus ID:	110460
UniProt ID:	Q8CAY6
Cytogenetics:	17 8.73 cM
Gene Summary:	Involved in the biosynthetic pathway of cholesterol.[UniProtKB/Swiss-Prot Function]