

Product datasheet for **MG206191**

Sh3glb2 (NM_139302) Mouse Tagged ORF Clone

Product data:

Product Type: Expression Plasmids
Product Name: Sh3glb2 (NM_139302) Mouse Tagged ORF Clone
Tag: TurboGFP
Symbol: Sh3glb2
Synonyms: SPAS-1
Mammalian Cell Selection: Neomycin
Vector: pCMV6-AC-GFP (PS100010)
E. coli Selection: Ampicillin (100 ug/mL)
ORF Nucleotide Sequence: >MG206191 representing NM_139302
 Red=Cloning site Blue=ORF Green=Tags(s)

TTTTGTAATACGACTCACTATAGGGCGGCCGGAATTCGTCGACTGGATCCGGTACCGAGGAGATCTGCC
 GCC**CGATCGCC**

ATGGACTCAACATGAAGAAGCTGGCGTCGGACGCGGGCATCTTCTTCACTCGGGCGGTGCAGTTCACAG
 AGGAGAAGTTGGCCAGGCTGAGAAGACGGAGCTTACGCCACTTTGAAAACCTCTAGCTCGGGCAGA
 CAGCACCAAGAACTGGACAGAGCGGATCCTGAGGCAGACCGAGGTGCTGCTGCAGCCCAACCCAGTGCT
 CGAGTGGAGGAGTTCCTATATGAGAAGCTGGACAGAAAGGTGCCCTCGAGAGTACCAATGGGGAGCTGC
 TGGCTCAGTACATGGCGGAGGCAGCCAGCGAGCTGGGCCAGCACTCCCTACGGGAAGACGCTGATCAA
 GGTGTCAGAAGCTGAGAAGCGCCTCGGAGCAGCAGAGCGGGATTCATTACACTGCCTCCCTCAGCTTC
 CTCACACCCCTGCGGAATTCCTAGAGGGGACTGGAAAACGATTTCAAGGAGAGGGCGGCTCCTGCAGA
 ACCGGCGTCTTGACCTGGATGCCTGCAAAGCCCGCTAAAGAAGGCCAAGGCAGCCGAAGCCAAAGCCAC
 GACGGTGCCTGACTTTCAGGAGACTAGACCTCGTAATTACATTCTATCGGCCAGCGCCTCCGCGCTTTGG
 AACGATGAAGTCGACAAGGCTGAGCAGGAGCTTCGAGTGGCGCAGACAGAGTTTGACCGGCAGGCAGAAG
 TGACCCGTCTCCTGCTGGAGGGGATCAGCAGTACTCATGTGAACCACTTCGCTGCCTCCATGAGTTCGT
 CAAGTCTCAGACAACCTACTATGCACAGTGTACCGCCACATGCTGGATCTGCAGAAACAGTAGGCAGA
 TTTCCAGGCACCTTCGTGGGCACCACAGAGCCTGCCTCCCAACCCCTGAGCAGCACCTCACCTACCACCA
 CTGCGGCCACCATGCCTGTGGTACCTACTGGGGCTGTCTTGCCCTCCAGAAGAGGCAGCCCTCTGCCT
 GGAGGAGTGGCTCCCCAGCCAGTGGGACTCGAAAGGCCCGGGTGTCTACGACTACGAGGCAGCTGAC
 AGCAGTGAAGTGGCCCTGCTGGCTGATGAGCTCATCACTGTCTACAGCCTGCCAGGCATGGATCCCGACT
 GGCTATTGGTGAAGAGGCAACAAGAAGGGCAAGGTTCTGTACCTACCTGGAACCTTCTCAGC

ACCGTACGCGGCCGCTCGAG - GFP Tag - GTTTAA



[View online »](#)

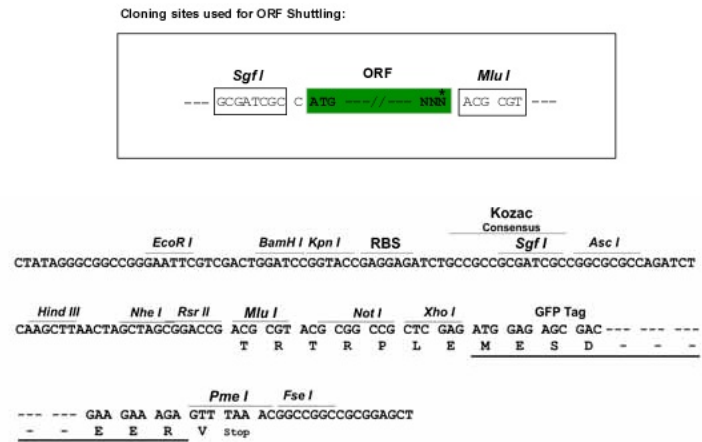
Protein Sequence: >MG206191 representing NM_139302
 Red=Cloning site Green=Tags(s)

MDFNMKKLASDAGIFFTRAVQFTEEKFGQAEKTELDAHFNLLARADSTKNWTERILRQTEVLLQPNPSA
 RVEEFLYEKLDKRVPSRVNTGELLAQYMAEAASELGPSTPYGKTLIKVSEAEKRLGAAERDFIHTASLSF
 LTPLRNFLEGDWKTISKERRLLQNRRLDL DACKARLKKAKAAEAKATTVPDFQETRPRNYILSASASALW
 NDEVDKAEQELRVAQTEFDRQAEVTRLLLEGISSTHVNHLRCLHEFVKSQTTYAQCYPHMLDLQKQLGR
 FPGTFVGTTEPASPPLSSTPTTTAATMPVVPTGAVLAPPEEAALCLEEVAPPASGTRKARVLYDYEAAD
 SSELALLADELITVYSLPGMDPDWLIGERGNKKGKVPVTYLELLS

TRTRPLE - GFP Tag - V

Restriction Sites: SgfI-MluI

Cloning Scheme:



ACCN: NM_139302

ORF Size: 1185 bp

OTI Disclaimer: The molecular sequence of this clone aligns with the gene accession number as a point of reference only. However, individual transcript sequences of the same gene can differ through naturally occurring variations (e.g. polymorphisms), each with its own valid existence. This clone is substantially in agreement with the reference, but a complete review of all prevailing variants is recommended prior to use. [More info](#)

OTI Annotation: This clone was engineered to express the complete ORF with an expression tag. Expression varies depending on the nature of the gene.

Components: The ORF clone is ion-exchange column purified and shipped in a 2D barcoded Matrix tube containing 10ug of transfection-ready, dried plasmid DNA (reconstitute with 100 ul of water).

- Reconstitution Method:**
1. Centrifuge at 5,000xg for 5min.
 2. Carefully open the tube and add 100ul of sterile water to dissolve the DNA.
 3. Close the tube and incubate for 10 minutes at room temperature.
 4. Briefly vortex the tube and then do a quick spin (less than 5000xg) to concentrate the liquid at the bottom.
 5. Store the suspended plasmid at -20°C. The DNA is stable for at least one year from date of shipping when stored at -20°C.

RefSeq: [NM_139302.2](#), [NP_647463.1](#)

RefSeq Size: 1740 bp

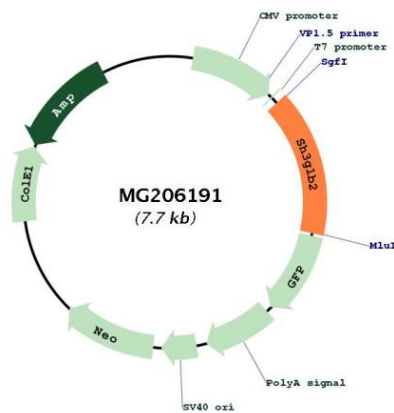
RefSeq ORF: 1188 bp

Locus ID: 227700

UniProt ID: [Q8R3V5](#)

Cytogenetics: 2 B

Product images:



Circular map for MG206191