

Product datasheet for **MG206126**

Cavin1 (NM_008986) Mouse Tagged ORF Clone

Product data:

Product Type: Expression Plasmids
Product Name: Cavin1 (NM_008986) Mouse Tagged ORF Clone
Tag: TurboGFP
Symbol: Cavin1
Synonyms: 2310075E07Rik; AW546441; Cav-p60; Cavin
Mammalian Cell Selection: Neomycin
Vector: pCMV6-AC-GFP (PS100010)
E. coli Selection: Ampicillin (100 ug/mL)
ORF Nucleotide Sequence: >MG206126 representing NM_008986
 Red=Cloning site Blue=ORF Green=Tags(s)

TTTTGTAATACGACTCACTATAGGGCGGCCGGAATTCGTCGACTGGATCCGGTACCGAGGAGATCTGCC
 GCC**CGATCGCC**

ATGGAGGATGTCACGCTCCATATCGTTGAGCGGCCGATTCCGGATTTCCCGATGCTTCTCAGAGGGCC
 CGGAGCCCAAGGGGAGGCGCGGGCCACGGAGGAGCCGTCGGGGACCGGCTCCGACGAGCTGATCAA
 GTCGGACCAGGTGAACGGTGTGCTGGTGTGAGCCTTCTGGATAAAATCATCGGCGCCGTTGACCAGATC
 CAGCTGACCCAAGCCAGCTGGAGGAGCGACAGGCGGAGATGGAGGGCGCTGTGCAGAGCATCCAGGGAG
 AGCTGAGCAAGCTGGGCAAGGCGCACGCCACCACGAGCAACCCGTGAGCAAGTTGCTGGAGAAGGTGCG
 CAAGGTCAGCGTCAACGTGAAGACCGTGCAGCGGACGCTGGAGCGCCAGGCGGCCAGATAAAGAACTG
 GAGGTCAACGAGGCGGAGCTGCTGAGGCGCCGCAACTTCAAAGTCATGATCTACCAGGATGAAGTCAAGC
 TGCCCGCCAAACTGAGCGTCAGCAAGTCGCTGAAAGAGTTCGGAGGCACTGCCTGAGAAGGAGGGTGACGA
 GCTGGGCGAGGGCGAGCGGCCGAGGATGACACCGCGGCGATCGAGCTGTCGTCCGACGAGGCGGTGGAG
 GTGGAGGAGGTGATCGAGGAGTCCCGCGCGAGCGCATCAAGCGCAGCGGCTGCGGCGCGTGGACGACT
 TCAAGAAGGCTTCTCCAAGGAGAAGATGGAGAAGACCAAGGTGCGCACGCGTGAAGCTGGAGAAGAC
 GCGCCTGAAGACCAAGGAGAACCTGGAGAAGACACGGCACACGCTGGAGAAGCGCATGAACAAGCTGGCC
 ACGCGCCTGGTGGCGTGGAGCGAGAGAGAAGCTGAAGACATCCCGGACAAGCTGCGCAAGTCCCTTCA
 CGCCCGACCATGTGGTGTATGCGCGCTCCAAGACCGCTGTCTACAAGGTGCCGCTTTCACCTTCCACGT
 CAAGAAGATCCGCGAGGGCGAGGTGGAGGTGCTGAAGGCCACCGAGATGGTGGAGGTGGTCCCGAGGAC
 GACGAGGTTGGCGGAGCGCGGCGAGGCCACTGACCTGCTGCGCGGAGCAGCCCCGACGTGCACACGC
 TGCTGGAGATCACCGAGGAGTCGGACGCCGCTCCTGGTGGACAAGAGCGACAGCGAC

AGCGGACCGACCGGTACGCGGCCGCTCGAG - GFP Tag - GTTTAA



[View online »](#)

Protein Sequence: >MG206126 representing NM_008986
 Red=Cloning site Green=Tags(s)

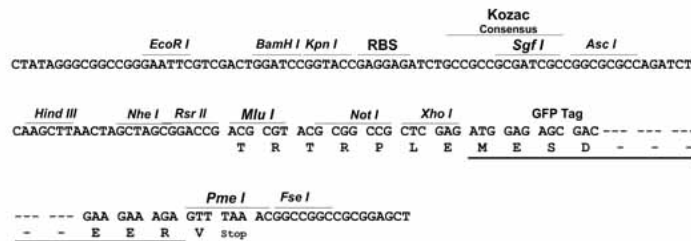
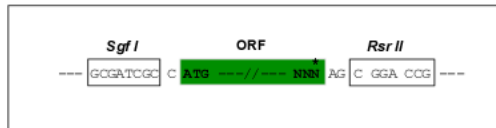
MEDVTLHIVERPYSGFDPASSEGEPTQGEARATEEESPGTGSDELIKSDQVNGVLVLSLLDKIIGAVDQI
 QL TQAQLEERQAEMEGAVQSIQGELSKLGKAHATTNTVSKLLEKVRKVSNNVKTVRGSLERQAGQIKKL
 EVNEAELLRRRNFKVMIYQDEVKLPKLSVSKSLKESEALPEKEGDELGEGERPEDDTAAIELSSDEAVE
 VEEVIEESRAERIKRSGLRVDDFKKAFSKEKMEKTKVVRTRENLEKTRLKTKENLEKTRHTLEKRMNKLK
 TRLVPVERREKLKTSRDKLRKSFDPDHVVYARSKTAVYKVPPTFHVKKIREGEVEVLKATEMVEVGPED
 DEVGAERGEATDLLRGSSPDVHTLLEITEESDAVLVDKSDSD

SGPTRRRLE - GFP Tag - V

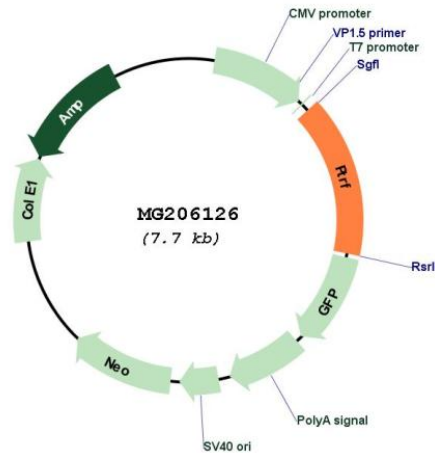
Restriction Sites: SgfI-RsrII

Cloning Scheme:

Cloning sites used for ORF Shuttling:



Plasmid Map:



ACCN: NM_008986

ORF Size:	1176 bp
OTI Disclaimer:	The molecular sequence of this clone aligns with the gene accession number as a point of reference only. However, individual transcript sequences of the same gene can differ through naturally occurring variations (e.g. polymorphisms), each with its own valid existence. This clone is substantially in agreement with the reference, but a complete review of all prevailing variants is recommended prior to use. More info
OTI Annotation:	This clone was engineered to express the complete ORF with an expression tag. Expression varies depending on the nature of the gene.
Components:	The ORF clone is ion-exchange column purified and shipped in a 2D barcoded Matrix tube containing 10ug of transfection-ready, dried plasmid DNA (reconstitute with 100 ul of water).
Reconstitution Method:	<ol style="list-style-type: none">1. Centrifuge at 5,000xg for 5min.2. Carefully open the tube and add 100ul of sterile water to dissolve the DNA.3. Close the tube and incubate for 10 minutes at room temperature.4. Briefly vortex the tube and then do a quick spin (less than 5000xg) to concentrate the liquid at the bottom.5. Store the suspended plasmid at -20°C. The DNA is stable for at least one year from date of shipping when stored at -20°C.
RefSeq:	NM_008986.2 , NP_033012.1
RefSeq Size:	3218 bp
RefSeq ORF:	1179 bp
Locus ID:	19285
UniProt ID:	O54724
Cytogenetics:	11 63.95 cM
Gene Summary:	Plays an important role in caveolae formation and organization. Essential for the formation of caveolae in all tissues (PubMed:18191225, PubMed:18840361, PubMed:18056712, PubMed:30188967). Core component of the CAVIN complex which is essential for recruitment of the complex to the caveolae in presence of calveolin-1 (CAV1) (PubMed:19546242). Essential for normal oligomerization of CAV1 (PubMed:23652019). Promotes ribosomal transcriptional activity in response to metabolic challenges in the adipocytes and plays an important role in the formation of the ribosomal transcriptional loop (PubMed:27528195). Dissociates transcription complexes paused by DNA-bound TTF1, thereby releasing both RNA polymerase I and pre-RNA from the template (PubMed:9582279, PubMed:11139612). The caveolae biogenesis pathway is required for the secretion of proteins such as GASK1A (PubMed:30188967).[UniProtKB/Swiss-Prot Function]