

## Product datasheet for **MG206113**

### Fez1 (NM\_183171) Mouse Tagged ORF Clone

#### Product data:

Product Type:	Expression Plasmids
Product Name:	Fez1 (NM_183171) Mouse Tagged ORF Clone
Tag:	TurboGFP
Symbol:	Fez1
Synonyms:	UNC-76; UNC76
Mammalian Cell Selection:	Neomycin
Vector:	pCMV6-AC-GFP (PS100010)
E. coli Selection:	Ampicillin (100 ug/mL)
ORF Nucleotide Sequence:	>MG206113 representing NM_183171 Red=Cloning site Blue=ORF Green=Tags(s)

TTTTGTAATACGACTCACTATAGGGCGGCCGGAATTCGTCGACTGGATCCGGTACCGAGGAGATCTGCC  
GCC**CGATCGCC**

ATGGAGGCCCACTGGTGAAGTCTGGATGAAGAGTTTGAAGATATCAGGCCAGTTGCACTGAGGAGCCAG  
AGGAAAAGCCACAGTGTCTGTATGGCACATCTCCTCATCACCTGGAGGACCCTTCCCTCTCTGAGCTTGA  
GAATTTTTCTTCCGAAATATCAGCTTCAAGTCCATGGAGGACCTCGTGAATGAATTTGATGAGAAGCTC  
AATGTCTGCTTTCCGAACTACAACGCCAAGACGGAGAGCCTGGCTCCAGTGAAGATCCAGCTGCAGATCC  
AGGAGGAGGAGGAGACTTTCGGGATGAGGAGTTTGGGATGCTCTGACAGACAATTACATCCCTTCACT  
CTCAGAAGACTGGAGGGACCCAAACATTGAAGCTCTGAATGGCAACAGCTCTGACATTGAGATTCATGAG  
AAGGAAGAAGAAGAGTTCAATGAGAAGAGTGAATGACTCTGGCATCAATGAGGAGCCTCTCCTCACAG  
CTGACCAGGTGATTGAGGAACTGAAGAAATGATGCAGAACTCTCCAGATCCTGAAGAGGAAGAGGAGGT  
GCTAGAAGAGGAGGATGGAGGAGAAATCTCATCCAGGCAGATTCAGTCTGCTACAAGAGATGCAGGCC  
TTGACACAGACCTTCAACGACAAGTGGTCTATGAAGGGCTGAGACACATGTCTGGGTCTGAGCTGACAG  
AGCTGCTGGACCGGTAGAGGGTGCCATCCGTGACTTCTCAGAGGAGCTGGTCCACCAGCTGGCCCGCAG  
AGATGAGCTGGAGTTTGAAGAAGAGTGAAGAAGTCACTCATCACGGTCTCATTGAGTTTCAAGAACAAG  
CAGAGGGAGCAGCGGAACTGATGAAGAAGAGGGCGAAAGAGAGGGTTAAGCCTGCAGAGCAACCGGA  
TAGAGAAGGGAAGTCAGATGCCTCTCAAGCGCTTCAGCATGGAAGGCATCTCAACATCCTGCAGAGCGG  
CATCCGCCAGACCTTTGGCTCCTCAGGAGCTGACAGACAGTATCTGAACACAGTCAATCCCTTATGAGAAG  
AAATCCTCTCCTCCCTCTGTGGAAGACCTGCAGATGCTGACAAACATTCTCTTCGCCATGAAGGAGGATA  
ACGAGAAGGTGCCTACTTTGCTAACGGACTACATTTTAAAGTGCTTTGTCCAACC

**ACGGTACGCGGCCGCTCGAG** - GFP Tag - GTTTAA



[View online »](#)

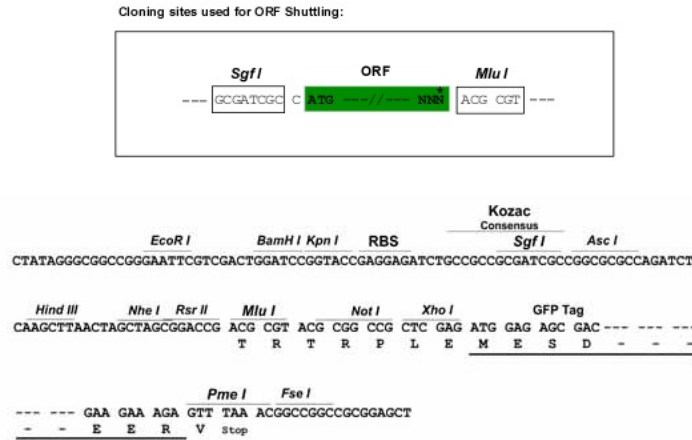
**Protein Sequence:** >MG206113 representing NM\_183171  
 Red=Cloning site Green=Tags(s)

MEAPLVSLDEEFDIRPSCTEEPEEKPQCLYGTSPHHLEDPSLSELENFSSEIISFKSMEDLVNEFDEKL  
 NVCFRNYNAKTESLAPVKIQLQIQEEEELTRDEEVWDALTDNYIPSLSEDWRDPNIEALNGNSSDIEIHE  
 KEEEFNEKSENDSGINEEPLLTADQVIEETEEMMQNSPDPEEEEEVLEEEDGGEISSQADSVLLQEMQA  
 LTQTFNDNWSYEGLRHMSGSELTELLDRVEGAIRDVSEELVHQLARRDELEFEKEVKNSFITVLIEVQNK  
 QREQREL MKRRRKEKGLSLQSNRIEKGSQMP LKRF SMEG I SNILQSGIRQTF GSSGADRQYLNTVIPYEK  
 KSSPPSVEDLQMLTNILFAMKEDNEKVPTLLTDYILKVLCP T

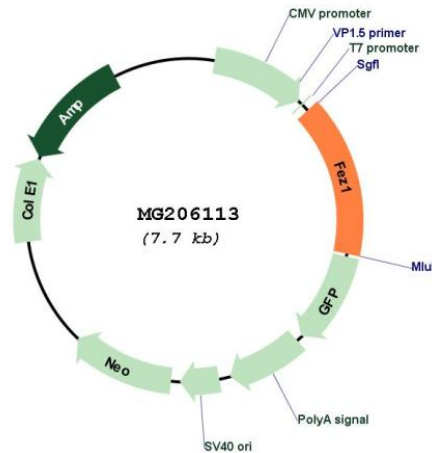
TRTRPLE - GFP Tag - V

**Restriction Sites:** SgfI-MluI

**Cloning Scheme:**



**Plasmid Map:**



**ACCN:** NM\_183171

<b>ORF Size:</b>	1176 bp
<b>OTI Disclaimer:</b>	The molecular sequence of this clone aligns with the gene accession number as a point of reference only. However, individual transcript sequences of the same gene can differ through naturally occurring variations (e.g. polymorphisms), each with its own valid existence. This clone is substantially in agreement with the reference, but a complete review of all prevailing variants is recommended prior to use. <a href="#">More info</a>
<b>OTI Annotation:</b>	This clone was engineered to express the complete ORF with an expression tag. Expression varies depending on the nature of the gene.
<b>Components:</b>	The ORF clone is ion-exchange column purified and shipped in a 2D barcoded Matrix tube containing 10ug of transfection-ready, dried plasmid DNA (reconstitute with 100 ul of water).
<b>Reconstitution Method:</b>	<ol style="list-style-type: none"><li>1. Centrifuge at 5,000xg for 5min.</li><li>2. Carefully open the tube and add 100ul of sterile water to dissolve the DNA.</li><li>3. Close the tube and incubate for 10 minutes at room temperature.</li><li>4. Briefly vortex the tube and then do a quick spin (less than 5000xg) to concentrate the liquid at the bottom.</li><li>5. Store the suspended plasmid at -20°C. The DNA is stable for at least one year from date of shipping when stored at -20°C.</li></ol>
<b>RefSeq:</b>	<a href="#">NM_183171.2</a>
<b>RefSeq Size:</b>	1694 bp
<b>RefSeq ORF:</b>	1179 bp
<b>Locus ID:</b>	235180
<b>UniProt ID:</b>	<a href="#">Q8K0X8</a>
<b>Cytogenetics:</b>	9 A4
<b>Gene Summary:</b>	May be involved in axonal outgrowth as component of the network of molecules that regulate cellular morphology and axon guidance machinery. May participate in the transport of mitochondria and other cargos along microtubules (By similarity).[UniProtKB/Swiss-Prot Function]