

Product datasheet for **MG206081**

Pafah2 (NM_133880) Mouse Tagged ORF Clone

Product data:

Product Type:	Expression Plasmids
Product Name:	Pafah2 (NM_133880) Mouse Tagged ORF Clone
Tag:	TurboGFP
Symbol:	Pafah2
Synonyms:	2310074E22Rik; AI507170
Mammalian Cell Selection:	Neomycin
Vector:	pCMV6-AC-GFP (PS100010)
E. coli Selection:	Ampicillin (100 ug/mL)
ORF Nucleotide Sequence:	>MG206081 representing NM_133880 Red=Cloning site Blue=ORF Green=Tags(s)

TTTTGTAATACGACTCACTATAGGGCGGCCGGAATTCGTCGACTGGATCCGGTACCGAGGAGATCTGCC
GCC**CGATCGCC**

ATGGGGGCCGCCAGTCTGTGTGCTTCCACCCATCTCGGGACCCACCACATTGGCTGCACGGATGTGA
TGGAGGGTCACAGTCTTGAGGGGAGCCTCTCCGACTCTTCTACCTTGCCAAGCATCAGAGAAGTGCGA
GCAGCCCTGTGGATTCCCGCTACGAGTACAGCATGGGTCTGGCCGATTACCTGCAGTATAACAAGCGC
TGGGTGGGTGTGCTGTTCAACGTGGGTATCGGATCTTGTGCTTGCCTGTTAGCTGGAACGGCCCTTTA
AGGCAAAGGAGTCTGGATACCCTTTGATCATCTTGTCCATGGCCTAGGAGGGTTCAGGGCGTCATACTC
GGCCTTCTGCATGGAGCTGGCCTCTCGTGGCTTTGTGGTTGCTGCCGTAGAGCACAGGGACCAGTCAGCT
GCGGCCACCTACTTCTGCAAGCCAACTCCCAGGAGAGCTCTCCCGCTGAATCTCTGGAGGAGGAGTGGC
TCCCTTCCGTCGCATCAAGGAAGGGGAGAAGGAGTTCACGTCAGGAATCCTCAGGTGCACCAGCGGGT
GAAAGAGTGTGTGCGAGTGTGCGGATCCTTCAGGACGCCTCTGCTGGGAAGACTGTCGTCAATGTCTTC
CCAGGAGGACTGGATCTGATGACCTTGAAGGCGAGCGTCGACACGAGCCGCGTGGCCGTGATGGTCACT
CCTTTGGAGGAGCTACGGCTGTTCTTGTCTTGAACCAGGAGTCCAGTTTCGGTGTGCTATAGCCCTGGA
CGCTTGGATGTTCCCTCTGGAACGGGACTTTTACCCAAAGCCCGGGGCCCTGTGTTCTTTATCAACGTC
GAGAAATTCAGACGGTAGAGAGCGTCAACTTGATGAAGAAGACTGTGCCACGACGAGCAGTCCAGGA
TCGTGACTGTCTAGGCGCTGTTTCATCGGAGTCAAAGTCAACTGACTTTGCTTTGTGACGGGCAACTGATTGC
TAAATTCTTTCCAGTAACTCTCGTGGTACCTTGACCCTTACGAAAGTCAAGAGGTCATGGTGAGGGCC
ATCTTGGCCTTCTGCAGAAGCACCTTGACCTGAAGGAAGACTACGATCAATGGAGCAGCTTCATCGAAG
GCGTCGGACCATCGTCAATCCAAGGGGCCCGCACTATCTGTCTAGTCTA

ACGCGTACGCGGCCGCTCGAG - GFP Tag - GTTTAA



[View online »](#)

Protein Sequence: >MG206081 representing NM_133880
Red=Cloning site Green=Tags(s)

MGAGQSVCFPPISGPHHIGCTDVMEGHSLEGLFRLFYPCQASEKCEQPLWIPRYEYSMGLADYLQYNKR
 WVGLLFNVGIGSCLPVSWNGPFKAKESGYPLIILSHLGGFRASYSAFCMELASRGFVVAAVEHRDQSA
 AATYFCKPTSQESSPAESLEEEWLPFRRIKEGEKEFHVRNPQVHQRVKECVRLRILQDASAGKTVVNVF
 PGGLDLMTLKGSDVTSRVAVMGHSFGGATAVLALTQEVQFRCAIALDAWMFPLERDFYPKARGPVFFINV
 EKFTVESVNLKKICAQHEQSRIVTVLGAVHRSQTDFAFVTGNLIAKFFSSNSRGTLDPYESQEVVMVRA
 ILAFLQKHLDLKEDYDQSSFFIEGVGPSLIQGAPHYLSSL

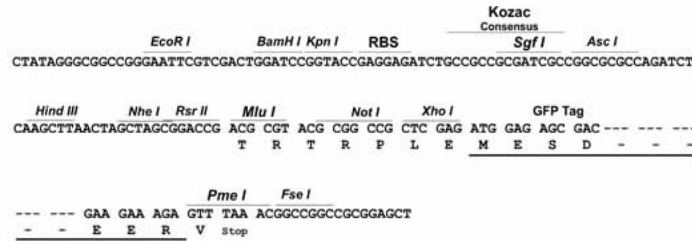
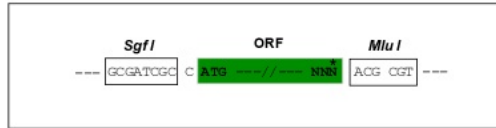
TRTRPLE - GFP Tag - V

Restriction Sites:

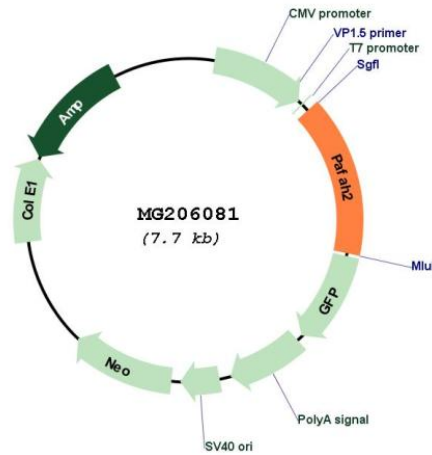
SgfI-MluI

Cloning Scheme:

Cloning sites used for ORF Shuttling:



Plasmid Map:



ACCN:

NM_133880

ORF Size:	1170 bp
OTI Disclaimer:	The molecular sequence of this clone aligns with the gene accession number as a point of reference only. However, individual transcript sequences of the same gene can differ through naturally occurring variations (e.g. polymorphisms), each with its own valid existence. This clone is substantially in agreement with the reference, but a complete review of all prevailing variants is recommended prior to use. More info
OTI Annotation:	This clone was engineered to express the complete ORF with an expression tag. Expression varies depending on the nature of the gene.
Components:	The ORF clone is ion-exchange column purified and shipped in a 2D barcoded Matrix tube containing 10ug of transfection-ready, dried plasmid DNA (reconstitute with 100 ul of water).
Reconstitution Method:	<ol style="list-style-type: none">1. Centrifuge at 5,000xg for 5min.2. Carefully open the tube and add 100ul of sterile water to dissolve the DNA.3. Close the tube and incubate for 10 minutes at room temperature.4. Briefly vortex the tube and then do a quick spin (less than 5000xg) to concentrate the liquid at the bottom.5. Store the suspended plasmid at -20°C. The DNA is stable for at least one year from date of shipping when stored at -20°C.
RefSeq:	NM_133880.1 , NP_598641.1
RefSeq Size:	3222 bp
RefSeq ORF:	1173 bp
Locus ID:	100163
UniProt ID:	Q8VDG7
Cytogenetics:	4 D3
Gene Summary:	Has a marked selectivity for phospholipids with short acyl chains at the sn-2 position. May share a common physiologic function with the plasma-type enzyme (By similarity). [UniProtKB/Swiss-Prot Function]