

## Product datasheet for **MG206039**

### Ttc4 (NM\_028209) Mouse Tagged ORF Clone

#### Product data:

**Product Type:** Expression Plasmids  
**Product Name:** Ttc4 (NM\_028209) Mouse Tagged ORF Clone  
**Tag:** TurboGFP  
**Symbol:** Ttc4  
**Synonyms:** 2810002P21Rik; AF007005; L62  
**Mammalian Cell Selection:** Neomycin  
**Vector:** pCMV6-AC-GFP (PS100010)  
**E. coli Selection:** Ampicillin (100 ug/mL)  
**ORF Nucleotide Sequence:** >MG206039 representing NM\_028209  
 Red=Cloning site Blue=ORF Green=Tags(s)

TTTTGTAATACGACTCACTATAGGGCGGCCGGAATTCGTCGACTGGATCCGGTACCGAGGAGATCTGCC  
 GCC**CGATCGCC**

ATGGAGAGTTCTGAGCCTGAGCCTACAGAGGACGCTTCCATGGACGCGTTCCTGGAAAAGTTTCAGAGCC  
 AGCCTTACCGCGCGGCTTCCGCGAGGATCAGTGGGAGGAGGAATTTGACAAGATCCCTATTTATGAA  
 AAAAGCGCCATCAGAAATGACCCCGAGGAGTTTCTGACTTGGCCTGCCTCCAGTCGATGATTTTTGAT  
 GATGATCGATATCCAGAAGAGCAAGCCAAGACCTATAAAGATGAGGGCAATGACTACTTTAAAGAAAAAG  
 ACTATAAGAAAGCTGTGCTTTCATACAGTGAAGGTTGAAGAAGAAGTGTGCAGACCCTGATTTGAATGC  
 TGTCTGTATACCAACCGGGCAGCAGCACAGTACTATCTCGGCAATGTTGTTCTTCCCTCAATGATGTG  
 CTGGCTGCCAAGAAGCTAAAGCCCGGTCACCTGAAAGCCATCATAAGAGGTGCCCTGTGCCATCTTGAAC  
 TGAAACACTTTGCTGAGGCTGTGAAGTGGTGTGATGAGGGACTACAAATTGATGCCAAAGAGAAGAACT  
 TCTAGAAATAAGGGCAAAAGCAGACAAGCTAAAGAGGATGGAAGAGAGGGATCTGAGGAAGGCAAGTTG  
 AAAGAAAAGAAGGAACAGCATCAGAATGAGGCTCTGCTCCAGGCCATCAAGGCTAGGAACATCAGGCTTG  
 TCTCTGAATCAGCCGGTGAAGTGAAGATTCAGCCTCCAATGGTCCAGCTGAGATACTCTGGATGGGCT  
 CAGCTCTGAGAACCCTATGGAGCCAGGCTAAGTATAGATGACCAGGGCAGGCTGAGCTGGCCTGTGCTG  
 TTCCTGTACCCGGAGTACGCGCAATCAGACTTCATCTCTGCTTTTCATGAGGACACCAGGTTTATTGACC  
 ATCTAATGGCGATGTTTAGTGAAGCACCTCCTGGGACTCAGAGCACAAGTACCACCCAGAGAATCTGGA  
 GGTCTACTTCGAGGATGAGGACAGGGCGGAACATAACCAGGTGTCTCCCGATAGCACCCCTGTTGCAGGTG  
 CTGCAGCACCCAGGTGCTGCGTGAAGGCCCTTACCCCGCATTCTGGTCTGTGTAGGATCCTCGCCTT  
 TCTGTAGGAATTACCTCCAGGGGAAGAAGGTGCACAGG

AGCGGACCGACGCGTACGCGGCCGCTCGAG - GFP Tag - GTTTAA



[View online »](#)

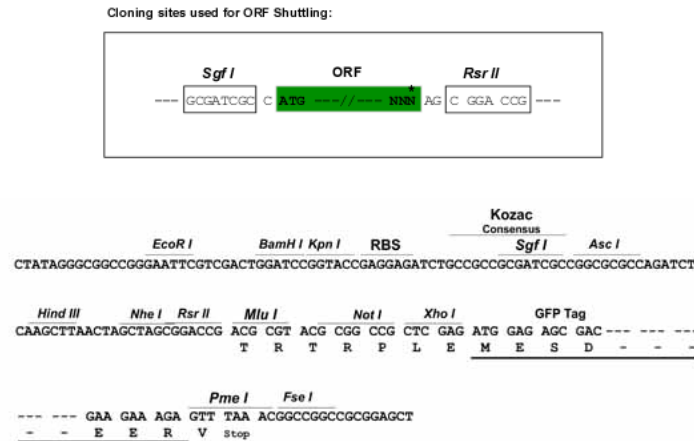
**Protein Sequence:** >MG206039 representing NM\_028209  
 Red=Cloning site Green=Tags(s)

MESSEPEPTEDASMDAFLEKFKSQPYRGGFREDQWEEEFDKIPLFMKKAPSEIDPEEFPDLACLQSMIFD  
 DDRYPEEQAKTYKDEGNDYFKEKDYKKAVALSYSEGLKKKCADPDLNAVL YTNRAAAQYYLGNVRSSLNDV  
 LAAKCLKPGHLKAIIRGALCHLELKHFAEAVNWCDEGLQIDAKEKKLLEIRAKADKLKRMEERDLRKAKL  
 KEKKEQHQNEALLQAIKARNIRLVSEAGEDDSASNGPAEILLDGLSSENYPYGARLSIDQGRLSWPVL  
 FLYPEYAQSDFI SAFHEDTRFIDHLMAMFSEAPSWDSEHKYHPENLEVYFEDEDRAELYQVSPDSTLLQV  
 LQHPRCCVKALTPAFLVCGSSPFCRNYLQGKKVHR

SGPTRRRLE - GFP Tag - V

**Restriction Sites:** SgfI-RsrII

**Cloning Scheme:**



**ACCN:** NM\_028209

**ORF Size:** 2566 bp

**OTI Disclaimer:** The molecular sequence of this clone aligns with the gene accession number as a point of reference only. However, individual transcript sequences of the same gene can differ through naturally occurring variations (e.g. polymorphisms), each with its own valid existence. This clone is substantially in agreement with the reference, but a complete review of all prevailing variants is recommended prior to use. [More info](#)

**OTI Annotation:** This clone was engineered to express the complete ORF with an expression tag. Expression varies depending on the nature of the gene.

**Components:** The ORF clone is ion-exchange column purified and shipped in a 2D barcoded Matrix tube containing 10ug of transfection-ready, dried plasmid DNA (reconstitute with 100 ul of water).

**Reconstitution Method:**

1. Centrifuge at 5,000xg for 5min.
2. Carefully open the tube and add 100ul of sterile water to dissolve the DNA.
3. Close the tube and incubate for 10 minutes at room temperature.
4. Briefly vortex the tube and then do a quick spin (less than 5000xg) to concentrate the liquid at the bottom.
5. Store the suspended plasmid at -20°C. The DNA is stable for at least one year from date of shipping when stored at -20°C.

**RefSeq:** [NM\\_028209.2](#), [NP\\_082485.1](#)

**RefSeq Size:** 2085 bp

**RefSeq ORF:** 1161 bp

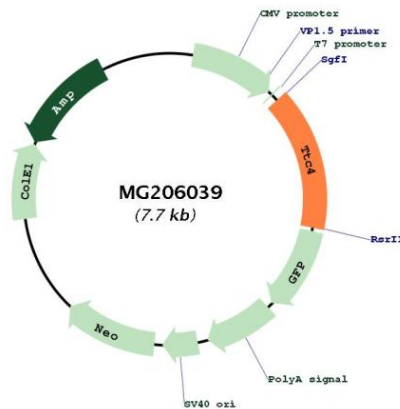
**Locus ID:** 72354

**UniProt ID:** [Q8R3H9](#)

**Cytogenetics:** 4 C7

**Gene Summary:** May act as a co-chaperone for HSP90AB1 (By similarity).[UniProtKB/Swiss-Prot Function]

**Product images:**



Circular map for MG206039