

## Product datasheet for **MG206032**

### **Bcat1 (BC053706) Mouse Tagged ORF Clone**

#### Product data:

Product Type:	Expression Plasmids
Product Name:	Bcat1 (BC053706) Mouse Tagged ORF Clone
Tag:	TurboGFP
Symbol:	Bcat1
Synonyms:	BCATc; Eca39
Mammalian Cell Selection:	Neomycin
Vector:	pCMV6-AC-GFP (PS100010)
E. coli Selection:	Ampicillin (100 ug/mL)
ORF Nucleotide Sequence:	>MG206032 representing BC053706 Red=Cloning site Blue=ORF Green=Tags(s)

TTTTGTAATACGACTCACTATAGGGCGGCCGGAATTCGTCGACTGGATCCGGTACCGAGGAGATCTGCC  
GCC**CGATCGCC**

ATGAAGGACTGCAGTAATGGATGCTCCGCGCCGTTTGTGGAGAAAGAGGATCAGAAGAAGTGCCGGAGA  
CTTTTAGGGCCAAAGATCTCATCATCACACCAGCCACTGTCTTAAAGAGAAGCCGGACCCGGATTTCGCT  
GGTCTTTGGAGCTACGTTTACTGACCACATGCTGACGGTGGAGTGGTCTCTGCGTCTGGATGGGAGAAA  
CCTCACATTAAGCCTTTTGGAACTTGCCATACATCCCGCTGCCTCTGTTTTGCACTACGCTGTGGAAC  
TGTTTGAAGGCTTGAAGCCTTTTCGGGGAGTTGATAACAAGATCCGATTGTTCCGGCCGGACCTCAACAT  
GGATAGAATGTGCCGATCTGCTGTGAGGACCACGCTGCCGATGTTTGACAAGGAGGAGCTCTAAAGTGT  
ATTCTTCAGCTTCTACAGATCGACCAAGAATGGGTTCCCTACTCCACCTCTGCCAGCCTCTACATCCGCC  
CCACATTTATCGGAAGTGGACTGAGCCATCTCTTGGCGTCAAGAAGCCTTCCAAAGCCCTACTCTTTGTGATCCT  
GAGCCCGTGGGACCTTATTTTTCTAGTGGATCTTTACTCCGGTGTCCCTGTGGGCAATCCAAAGTAT  
ATCAGAGCCTGGAAGGTGGGACTGGAGACTGCAAGATGGGCGGCAATTATGGAGCCTCCCTTCTGGCAC  
AGTGCGAGGCCGCGGAGAATGGCTGTGAGCAGGTCCTGTGGCTGTACGGCAAGGACAACAGATAACTGA  
AGTAGGCACAATGAATCTTTCCCTACTGGATAAACGAAGACGGAGAAGAGGAGCTGGCAACGCCCCCA  
CTAGATGGCATATTCTCCAGGAGTGACCAGGCAGAGCATCTGGAGCTGGCACAACAGTGGGGTGAGT  
TTAAGGTATGTGAGAGACACCTCACCATGGATGACCTGGCCACCGCCCTTGAGGGGAACAGAGTGAAGGA  
GATGTTCCGGCTCAGGGACAGCCTGCGTTGTCTGCCAGTCTCTGATATTCTGTACAAGGGCCAGATGCTG  
CATATTCCAACGATGGAGAATGGCCCAAGCTTGAAGTCAAGTCAATCCTGGGAAAGCTGACTGATATCCAGT  
ATGGAAGGTGGAGAGTGACTGGACAATCGAGCTACCC

**ACCGT**ACGCGGCCGCTCGAG - GFP Tag - GTTTAA



[View online »](#)

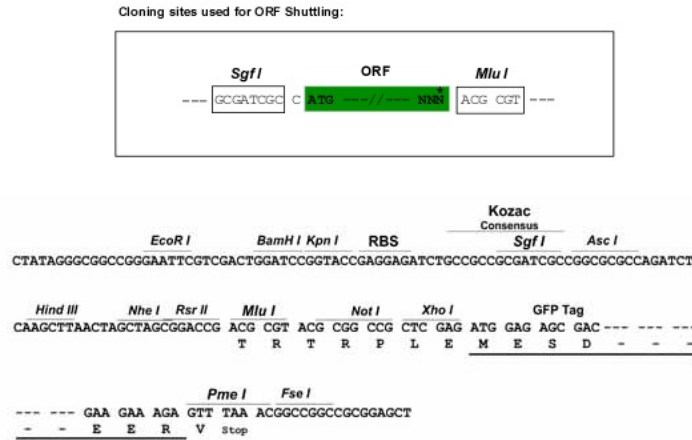
**Protein Sequence:** >MG206032 representing BC053706  
 Red=Cloning site Green=Tags(s)

MKDCSNGCSAPFAGERGSEEVAETFRAKDLIITPATVLKEKPPDPSLVFGATFTDHMLTVEWSSASGWK  
 PHIKPFGNLPiHPAASVLHYAVELFEGLKAFRGVDNKIRLFRPDLNMDRMCRSAVRTTLPMDKEELLKC  
 ILQLLQIDQEWVYSTSASLYIRPTFIGTEPSLGKKPSKALLFVILSPVGPYFSSGSFTPVSLWANPKY  
 IRAWKGGTGDCKMGGNYGASLLAQCEAAENGCCQVWLWYKDNQITEVGTMNLFPYWINEDGEEELATPP  
 LDGIILPGVTRQSILELAQQWGEFKVRCERHLMDDLATALEGNRVKEMFGSGTACVVCVSDILYKGMQL  
 HIPTMENGPKLASRILGKLTDIQYGRVESDWTIELP

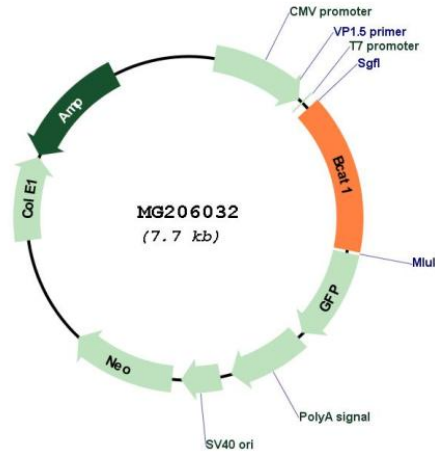
TRTRPLE - GFP Tag - V

**Restriction Sites:** SgfI-MluI

**Cloning Scheme:**



**Plasmid Map:**



**ACCN:** BC053706

<b>ORF Size:</b>	1160 bp
<b>OTI Disclaimer:</b>	The molecular sequence of this clone aligns with the gene accession number as a point of reference only. However, individual transcript sequences of the same gene can differ through naturally occurring variations (e.g. polymorphisms), each with its own valid existence. This clone is substantially in agreement with the reference, but a complete review of all prevailing variants is recommended prior to use. <a href="#">More info</a>
<b>OTI Annotation:</b>	This clone was engineered to express the complete ORF with an expression tag. Expression varies depending on the nature of the gene.
<b>Components:</b>	The ORF clone is ion-exchange column purified and shipped in a 2D barcoded Matrix tube containing 10ug of transfection-ready, dried plasmid DNA (reconstitute with 100 ul of water).
<b>Reconstitution Method:</b>	<ol style="list-style-type: none"><li>1. Centrifuge at 5,000xg for 5min.</li><li>2. Carefully open the tube and add 100ul of sterile water to dissolve the DNA.</li><li>3. Close the tube and incubate for 10 minutes at room temperature.</li><li>4. Briefly vortex the tube and then do a quick spin (less than 5000xg) to concentrate the liquid at the bottom.</li><li>5. Store the suspended plasmid at -20°C. The DNA is stable for at least one year from date of shipping when stored at -20°C.</li></ol>
<b>RefSeq:</b>	<a href="#">BC053706</a> , <a href="#">AAH53706</a>
<b>RefSeq Size:</b>	2493 bp
<b>RefSeq ORF:</b>	1160 bp
<b>Locus ID:</b>	12035
<b>Cytogenetics:</b>	6 77.27 cM
<b>Gene Summary:</b>	Catalyzes the first reaction in the catabolism of the essential branched chain amino acids leucine, isoleucine, and valine.[UniProtKB/Swiss-Prot Function]