

Product datasheet for **MG205867**

Aplnr (NM_011784) Mouse Tagged ORF Clone

Product data:

Product Type: Expression Plasmids
Product Name: Aplnr (NM_011784) Mouse Tagged ORF Clone
Tag: TurboGFP
Symbol: Aplnr
Synonyms: Agtrl1; APJ; msr/apj
Vector: pCMV6-AC-GFP (PS100010)
E. coli Selection: Ampicillin (100 ug/mL)
Cell Selection: Neomycin
ORF Nucleotide Sequence: >MG205867 representing NM_011784
Red=Cloning site Blue=ORF Green=Tags(s)

TTTTGTAATACGACTCACTATAGGGCGGCCGGGAATTCGTCGACTGGATCCGGTACCGAGGAGATCTGCC
 GCCGCGATCGCC

ATGGAAGATGATGGTTACAACACTACTATGGGGCTGACAACCAGTCTGAATGCGACTACGCAGACTGGAAGC
 CCTCTGGAGCGCTCATTCTGCCATCTACATGTTGGTTTTTCTCTAGGCACCACAGGCAATGGCCTGGT
 GCTCTGGACCGTGTTCGAACCAGCCGCGAAAAGAGACGCTCAGCTGACATCTTCATTGCCAGCCTGGCA
 GTGGCTGACTTGACCTTTGTGGTGACTTTGCCACTGTGGGCCACTTATACCTACCGGGAGTTGACTGGC
 CTTTTGGAACCTTCTCTTGCAAGCTCAGCAGCTACCTCATCTTTGCAACATGTACGCCAGTGTCTTTTG
 CCTCACCGCCTCAGCTTTGACCGATACCTGGCCATTGTGAGCCGGTGGCCAATGCTCGGCTAAGGCTG
 CGAGTCAGCGGGCCGTGGCCACAGCAGTCTTATGGGTGCTGGCTGCCCTTCTAGCTGTGCCTGTCATGG
 TGTTCCGTTCCACAGACGCCTCGGAAAATGGCACCAAGATCCAGTGCTACATGGACTACTCTATGGTGGC
 CACTTCAAACCTCAGAGTGGGCCCTGGGAGGTGGGCCCTGGGGTGTCTCCACTGCCGTGGGCTTTGTGGT
 CCCTTACCATCATGCTGACATGTTACTTCTTCATTGCCAAACCATCGCTGGCCATTTCCGAAAGGAGC
 GCATTGAGGGCCTGCGGAAGAGGCCCGCTGCTCAGCATTATCGTGGTGCTTGTAGTACCTTTGCCCT
 GTGCTGGATGCCTTACCACCTGGTGAAGACTCTACATGCTGGGCAGTTTGTGCTGACTGGCCCTGTGAC
 TTTGACATCTTCTCATGAATGTCTTTCCGTAAGTGCACCTGCATCAGTTATGTCAACAGCTGCCTCAACC
 CCTTTCTCTATGCCTTTTACCCCGATTTCCGCAAGCCTGCACCTCCATGCTCTGCTGTGATCAGAG
 CGGGTGCAAAGGCACCCCTCACAGCAGTAGTCCGAGAAGTCAGCCAGTTATTCTTCCGGGCACAGCCAG
 GGCCCTGGCCCAACATGGGAAAGGGAGGAGAGCAGATGCATGAGAAATCGATTCCCTATAGTCAAGAAA
 CCCTTGTGGAC

ACGCGTACGCGGCCGCTCGAG - GFP Tag - GTTTAA



[View online »](#)

Protein Sequence: >MG205867 representing NM_011784
 Red=Cloning site Green=Tags(s)

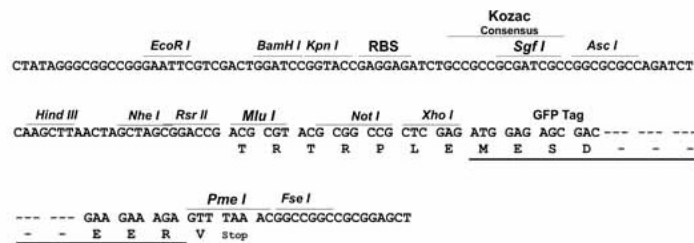
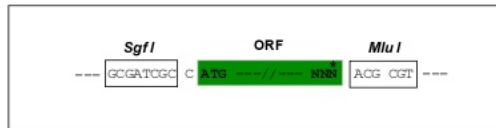
MEDDGYNYYGADNQSECDYADWKPSGALIPAIYMLVFLGTTGNGLVLWTVFRTSREKRRSADIFIASLA
 VADLTFVVTLPWATYTYREFDWPFGTFSCKLSSYLIFVNMYSVFCLTGLSFDRYLAIVRPVANARLRL
 RVSGAVATAVLWVLAALLAVPVMVFRSTDAENGTKIQCYMDYSMVATSNSEWAVEVGLGVSSTAVGFVV
 PFTIMLTCYFFIAQTIAGHFRKERIEGLRKRRRLSIIIVLVVTFALCWMPYHLVKTLYMLGSLHWPCCD
 FDIFLMNVFPYCTCISYVNSCLNPFLYAFFDPRFRQACTSMLCCDQSGCKGTPHSSSAEKSASYSGHSQ
 GPGPNMGKGGEQMHEKSIPYSQETLVD

TRTRPLE - GFP Tag - V

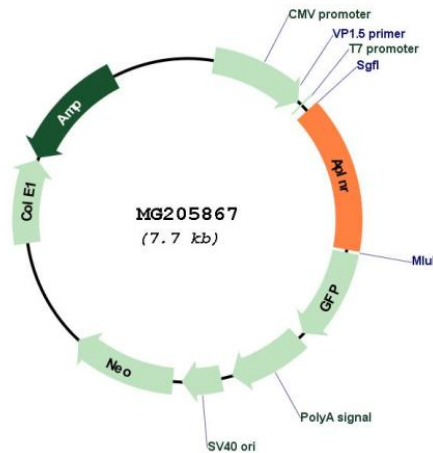
Restriction Sites: SgfI-MluI

Cloning Scheme:

Cloning sites used for ORF Shutting:



Plasmid Map:



ACCN: NM_011784

ORF Size:	1131 bp
OTI Disclaimer:	The molecular sequence of this clone aligns with the gene accession number as a point of reference only. However, individual transcript sequences of the same gene can differ through naturally occurring variations (e.g. polymorphisms), each with its own valid existence. This clone is substantially in agreement with the reference, but a complete review of all prevailing variants is recommended prior to use. More info
OTI Annotation:	This clone was engineered to express the complete ORF with an expression tag. Expression varies depending on the nature of the gene.
RefSeq:	NM_011784.2 , NP_035914.1
RefSeq Size:	3544 bp
RefSeq ORF:	1134 bp
Locus ID:	23796
UniProt ID:	Q9WV08
Gene Summary:	Receptor for apelin receptor early endogenous ligand (APELA) and apelin (APLN) hormones coupled to G proteins that inhibit adenylate cyclase activity. Plays a key role in early development such as gastrulation, blood vessels formation and heart morphogenesis by acting as a receptor for APELA hormone (PubMed:28854362, PubMed:28890073, PubMed:28663440). May promote angioblast migration toward the embryonic midline, i.e. the position of the future vessel formation, during vasculogenesis (By similarity). Promotes sinus venosus (SV)-derived endothelial cells migration into the developing heart to promote coronary blood vessel development (PubMed:28890073). Plays also a role in various processes in adults such as regulation of blood vessel formation, blood pressure, heart contractility and heart failure (PubMed:28371822).[UniProtKB/Swiss-Prot Function]