

Product datasheet for **MG205824**

Actg1 (BC021796) Mouse Tagged ORF Clone

Product data:

Product Type:	Expression Plasmids
Product Name:	Actg1 (BC021796) Mouse Tagged ORF Clone
Tag:	TurboGFP
Symbol:	Actg1
Synonyms:	MGC28612, E51, Actg
Mammalian Cell Selection:	Neomycin
Vector:	pCMV6-AC-GFP (PS100010)
E. coli Selection:	Ampicillin (100 ug/mL)
ORF Nucleotide Sequence:	>MG205824 representing BC021796 Red=Cloning site Blue=ORF Green=Tags(s)

TTTTGTAATACGACTCACTATAGGGCGGCCGGAATTCGTCGACTGGATCCGGTACCGAGGAGATCTGCC
GCC**CGATCGCC**

ATGGAAGAAGAAATCGCCGCACTCGTCATTGACAATGGCTCCGGCATGTGCAAAGCCGGCTTTGCTGGCG
ACGACGCCCCAGGGCCGTGTTCCCTTCCATCGTAGGGCGCCCCGACACCAGGGCGTCATGGTGGGCAT
GGGCCAGAAAGACTCATACTGGGTGACGAGGCCAGAGCAAGAGGGGTATCCTGACCCTGAAGTACCT
ATCGAACACGGCATTGTCACTAACTGGGACGACATGGAGAAGATCTGGCACCACACCTTCTACAATGAGC
TGGTGTGGCTCCTGAGGAGCACCCGGTCTTCTGACCGAGGCCCCCTGAACCCCAAAGCTAACAGAGA
GAAGATGACGCAGATAATGTTTGAACCTTCAATACCCAGCCATGTACGTGGCCATTACAGCGGTGCTG
TCCTTGTATGCATCTGGGCGCACCACTGGCATTGTGATGGACTCTGGTGACGGGGTACACACACAGTGC
CCATCTATGAGGGCTACGCCCTTCCCCACGCCATCTTGGCTCTGGACCTGGCTGGCCGGGACCTGACAGA
CTACCTCATGAAGATCCTGACTGAACGGGGCTACAGCTTACCACCCTGCTGAGAGGAAATGTTTCGT
GACATAAAGGAGAAGCTGTGCTATGTTGCCCTGGATTTGAGCAAGAAATGGCTACTGCTGCATCATCTT
CCTCCTGGAGAAGGTTACGAGCTGCCGACGGGCAGGTGATCACCATTGGCAATGAGCGGTTCCGGTG
TCCGGAGGCACCTTCCAGCCTTCTTCTGGGCATGGAGTCTGTGGTATCCATGAGACCATTTC AAC
TCCATCATGAAGTGTGATGTGGATATCCGCAAAGACCTGTATGCCAATACAGTGTCTGGTGGTACCA
CCATGTACCCAGGCATTGCTGACAGGATGCAGAAGGAGATCACAGCCCTAGCACCTAGCACGATGAAGAT
TAAGATCATTGCTCCCCCTGAGCGCAAGTACTCAGTCTGGATCGGTGGCTCCATTCTGGCCTCACTGTCC
ACCTTCCAGCAGATGTGGATCAGCAAGCAGGAGTATGATGAGTACGGCCCTCCATCGTCCACCGCAAAT
GCTTC

ACGCGTACGCGGCCGCTCGAG - GFP Tag - GTTTAA



[View online »](#)

Protein Sequence: >MG205824 representing BC021796
 Red=Cloning site Green=Tags(s)

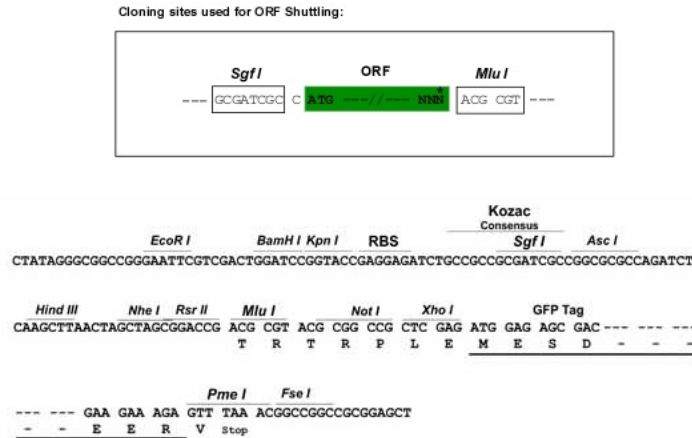
MEEEIAALVIDNGSGMCKAGFAGDDAPRAVFPISIVGRPRHQVMVGMGQKDSYVGDEAQSQRGILTLKYP
 IEHGIVTNWDDMEKIWHHTFYNELRVAPEEHPVLLTEAPLNPKANREKMTQIMFETFNTPAMYVAIQAVL
 SLYASGRTTGIVMDSGDVTHTVPIYEGYALPHAILRLDLAGRDLTDYLMKILTERGYSFTTTAEREIVR
 DIKEKLCYVALDFEQEMATAASSSSLEKSYELPDGQVITIGNERFRCPEALFQPSFLGMESCGIHETTFN
 SIMKCDVDIRKDLYANTVLSGGTTMYPGIADRMQKEITALAPSTMKIKIIAPPERKYSVWIGGSILASLS
 TFQMWISKQEYDESGPSIVHRKCF

TRTRPLE - GFP Tag - V

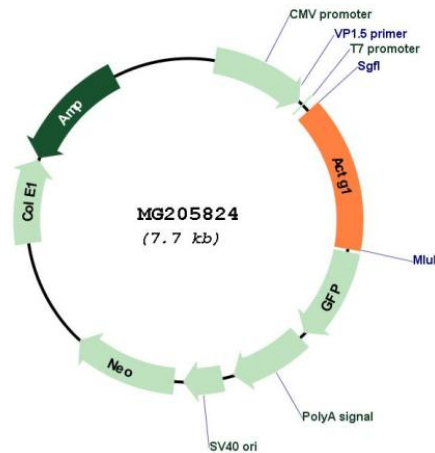
Restriction Sites:

SgfI-MluI

Cloning Scheme:



Plasmid Map:



ACCN:

BC021796

ORF Size:	1127 bp
OTI Disclaimer:	The molecular sequence of this clone aligns with the gene accession number as a point of reference only. However, individual transcript sequences of the same gene can differ through naturally occurring variations (e.g. polymorphisms), each with its own valid existence. This clone is substantially in agreement with the reference, but a complete review of all prevailing variants is recommended prior to use. More info
OTI Annotation:	This clone was engineered to express the complete ORF with an expression tag. Expression varies depending on the nature of the gene.
Components:	The ORF clone is ion-exchange column purified and shipped in a 2D barcoded Matrix tube containing 10ug of transfection-ready, dried plasmid DNA (reconstitute with 100 ul of water).
Reconstitution Method:	<ol style="list-style-type: none">1. Centrifuge at 5,000xg for 5min.2. Carefully open the tube and add 100ul of sterile water to dissolve the DNA.3. Close the tube and incubate for 10 minutes at room temperature.4. Briefly vortex the tube and then do a quick spin (less than 5000xg) to concentrate the liquid at the bottom.5. Store the suspended plasmid at -20°C. The DNA is stable for at least one year from date of shipping when stored at -20°C.
RefSeq:	BC021796 , AAH21796
RefSeq Size:	1909 bp
RefSeq ORF:	1127 bp
Locus ID:	11465
Cytogenetics:	11 E2
Gene Summary:	Actins are highly conserved proteins that are involved in various types of cell motility and maintenance of the cytoskeleton. In vertebrates, three main groups of actin isoforms, alpha, beta, and gamma, have been identified. The alpha actins are found in muscle tissues and are a major constituent of the contractile apparatus. The beta and gamma actins co-exist in most cell types as components of the cytoskeleton, and as mediators of internal cell motility. Actin, gamma 1, encoded by this gene, is a cytoplasmic actin found in non-muscle cells. Alternative splicing results in multiple transcript variants. [provided by RefSeq, Sep 2015]